

RACK-MOUNTED

# Adapter Patch Panel

ZT-182

Mini-Circuits

50Ω DC to 11 GHz N-Type Female

## THE BIG DEAL

- Convenient panel-mounted design
- Excellent VSWR
- Flat frequency response

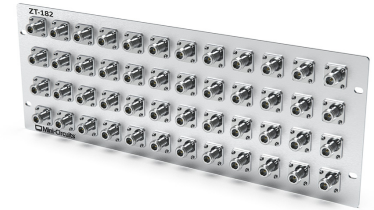
## APPLICATIONS

- Production test set-ups
- Simplification of cable runs
- Interconnection of RF cables & equipment
- Cellular base-station testing

## PRODUCT OVERVIEW

Mini-Circuits panel-mounted structures provide clean, organized management of cable runs and connections in complex, high-volume test setups. Multiple connector adapters, power splitters, directional couplers and other essential RF components and test accessories can be integrated efficiently within the test system. Custom configurations are available upon request.

ZT-182 integrates 48 precision N-Type connector adapters (female to female) on to a 4U panel.



Generic photo used for illustration purposes only

|            |               |
|------------|---------------|
| Model No.  | ZT-182        |
| Case Style | YF2075        |
| Connectors | N-Type Female |

### RoHS Compliant

See our website for RoHS Compliance methodologies and qualifications

## ELECTRICAL SPECIFICATIONS AT 25°C

| Parameter      | Frequency (GHz) | Min. | Typ. | Max. | Unit |
|----------------|-----------------|------|------|------|------|
| Frequency      | -               | DC   | -    | 11   | GHz  |
| Insertion Loss | DC - 6          | -    | 0.1  | -    | dB   |
| Return Loss    | DC - 6          | -    | 35   | -    | dB   |
|                | 6 - 11          | -    | 30   | -    |      |

## MECHANICAL & ENVIRONMENTAL SPECIFICATIONS

|               |   |  |          |             |
|---------------|---|--|----------|-------------|
| Dimensions    | 19" (W) x 4U (H)  |  |          |             |
| Case Style    | YF2075  |  |          |             |
| Case Material | Aluminum (with protective coating to prevent corrosion)                               |  |          |             |
| RF Connectors | Face  | Connector  | Quantity | Port Labels |
|               | Front   | N-Type Female  | 48       | 01-48       |
|               | Rear  | N-Type Female  | 48       | 01-48       |
| Panel Marking | Front Panel   | Rear Panel   |          |             |
|               | <ul style="list-style-type: none"><li>• ZT-182</li><li>• N-Type Patch Panel</li></ul> | <ul style="list-style-type: none"><li>• CE / EAC / UKCA</li><li>• Serial number / date code / model name</li></ul> |          |             |
| Panel Items   | <ul style="list-style-type: none"><li>• Carry handles</li></ul>                       |  |          |             |
| Temperature   | Operating: 0 to +50 °C  |  |          |             |

Mini-Circuits



RACK-MOUNTED

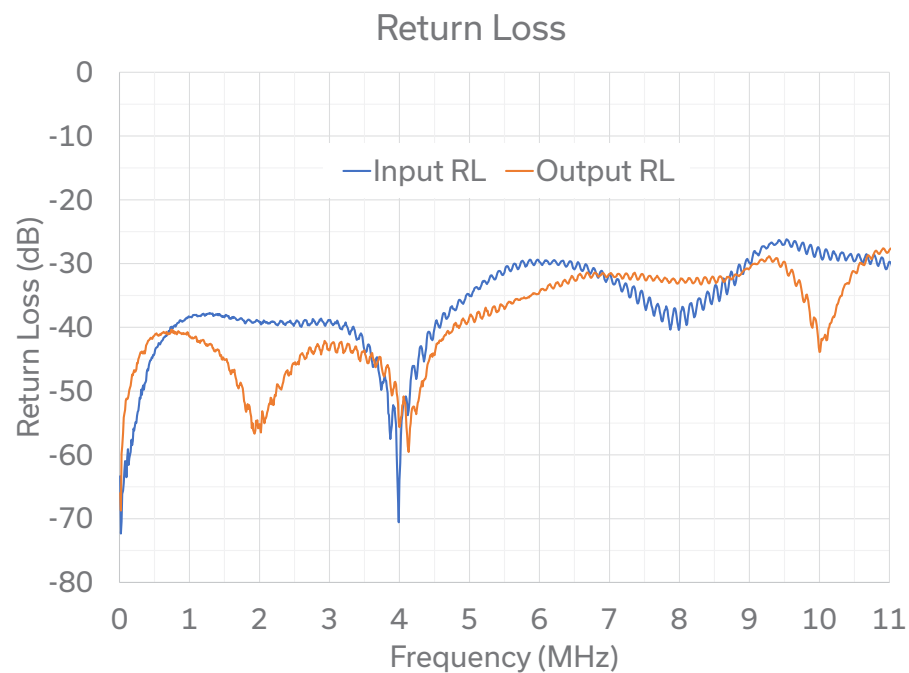
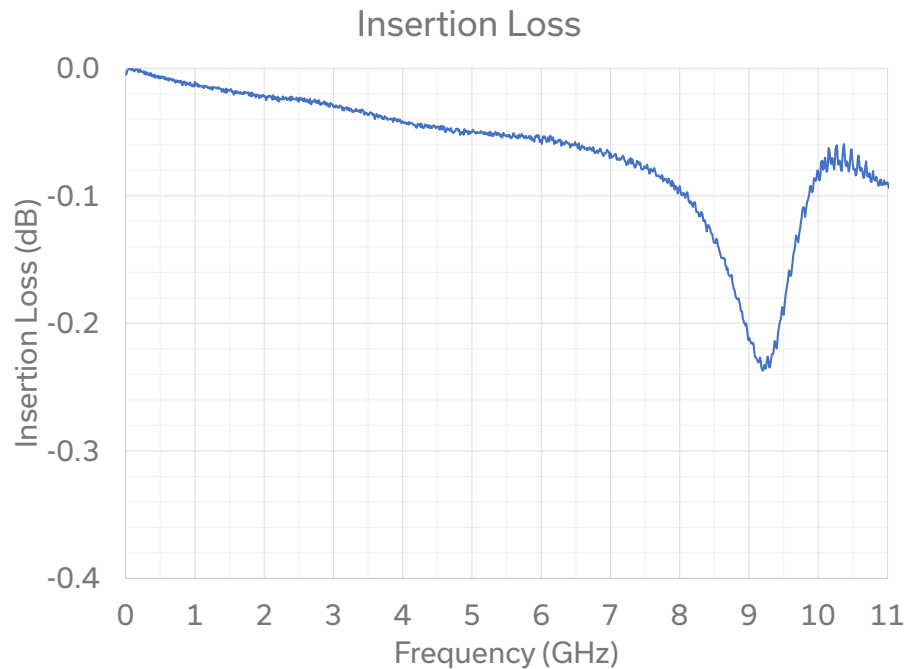
# Adapter Patch Panel

ZT-182

Mini-Circuits

50Ω DC to 11 GHz N-Type Female

## TYPICAL PERFORMANCE CURVES





RACK-MOUNTED

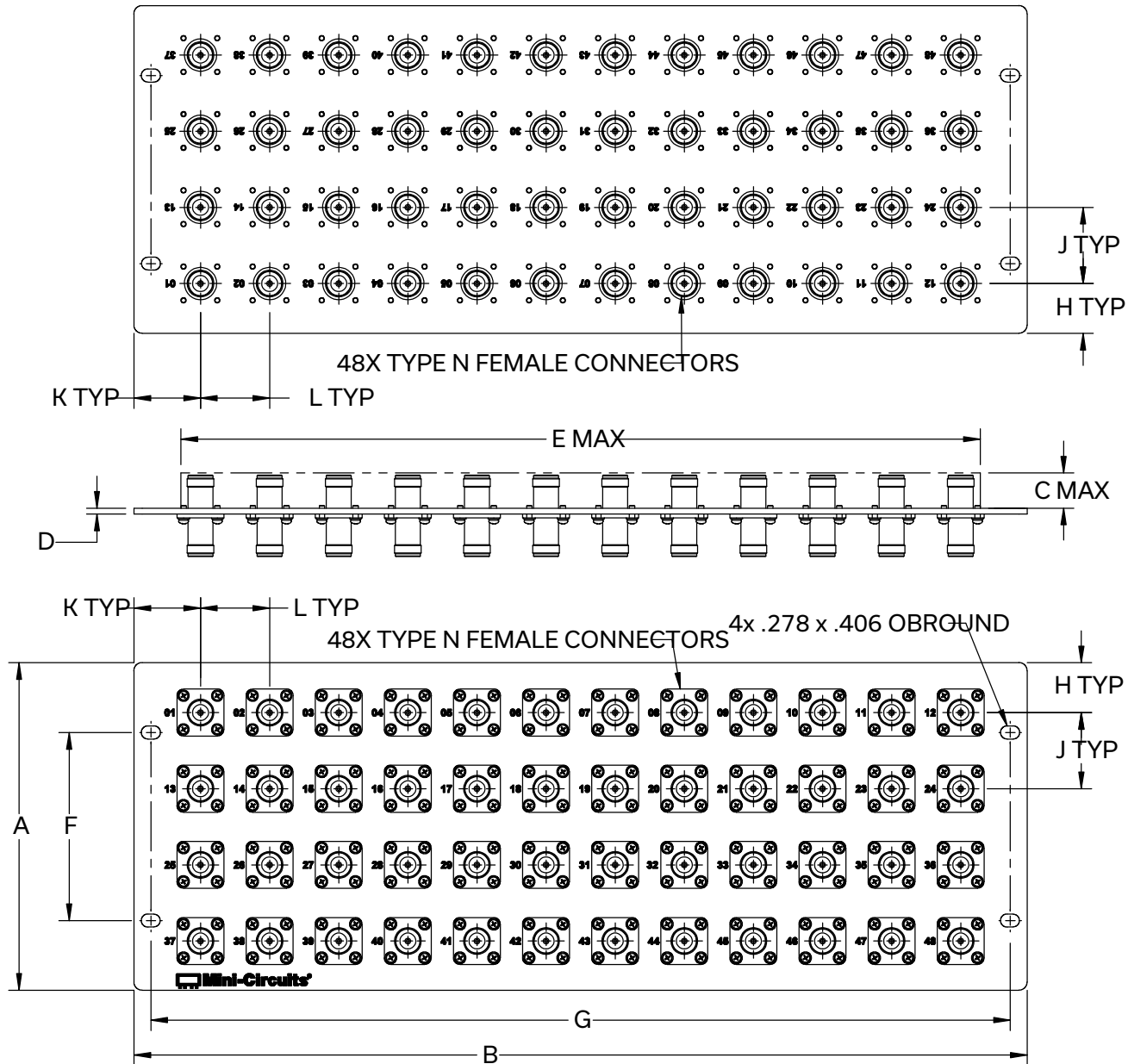
# Adapter Patch Panel

ZT-182

Mini-Circuits

50Ω DC to 11 GHz N-Type Female

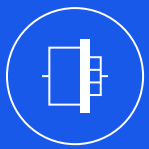
## OUTLINE DRAWING



## OUTLINE DIMENSIONS (Inch/mm)

| A     | B     | C    | D    | E     | F      | G      | H    | J    | K    | L    | weight |
|-------|-------|------|------|-------|--------|--------|------|------|------|------|--------|
| 6.97  | 19.00 | 0.75 | 0.13 | 17    | 4.000  | 18.28  | 1.06 | 1.62 | 1.42 | 1.47 | grams  |
| 177.0 | 482.6 | 19.1 | 3.3  | 431.8 | 101.60 | 464.31 | 26.9 | 41.1 | 36.1 | 37.3 | 3400   |





# Adapter Patch Panel

**ZT-182**

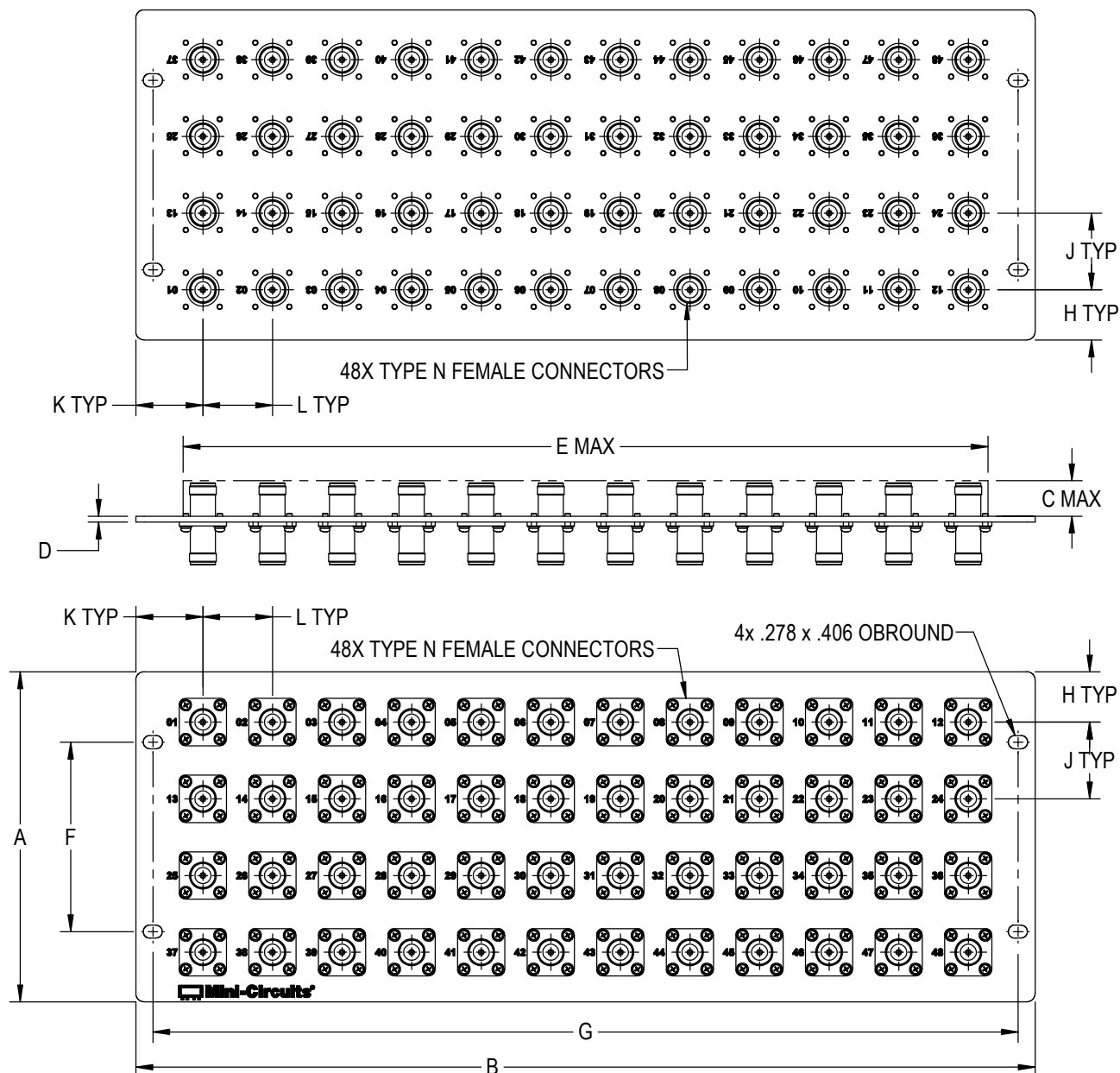
50Ω   DC to 11 GHz   N-Type Female

**ORDERING INFORMATION**To learn more, click here: [ZT-182](#)

| Model  | Description                                      |
|--------|--|
| ZT-182 | 48 x N-Type Female to Female Adapter Patch Panel |

**NOTES**

- A. Performance and quality attributes and conditions not expressly stated in this specification document are intended to be excluded and do not form a part of this specification document.
- B. Electrical specifications and performance data contained in this specification document are based on Mini-Circuit's applicable established test performance criteria and measurement instructions.
- C. The parts covered by this specification document are subject to Mini-Circuits standard limited warranty and terms and conditions (collectively, "Standard Terms"); Purchasers of this part are entitled to the rights and benefits contained therein. For a full statement of the standard terms and the exclusive rights and remedies thereunder, please visit Mini-Circuits' website at [www.minicircuits.com/terms/viewterm.html](http://www.minicircuits.com/terms/viewterm.html)



| CASE # | A       | B       | C      | D     | E       | F        | G        | H      | J      | K      | L      | WT, GRAMS |
|--------|---------|---------|--------|-------|---------|----------|----------|--------|--------|--------|--------|-----------|
| YF2075 | 6.97    | 19.00   | .75    | .13   | 17.00   | 4.000    | 18.280   | 1.06   | 1.62   | 1.42   | 1.47   | 3400      |
|        | (177.0) | (482.6) | (19.0) | (3.3) | (431.8) | (101.60) | (464.31) | (26.9) | (41.1) | (36.1) | (37.3) |           |

Dimensions are in inches (mm). Tolerances: 1 Pl.  $\pm 1$ ; 2 Pl.  $\pm .03$ ; 3 Pl.  $\pm .015$

### Notes:

- Case material: Aluminum alloy.
- Finish: Clear chemical conversion coating



P.O. Box 350166, Brooklyn, New York 11235-0003 (718) 934-4500 Fax (718) 332-4661 For detailed performance specs & shopping online see Mini-Circuits web site



The Design Engineers Search Engine Provides ACTUAL Data Instantly From MINI-CIRCUITS At: [www.minicircuits.com](http://www.minicircuits.com)

RF/IF MICROWAVE COMPONENTS



## Environmental Specifications ENV55

All Mini-Circuits products are manufactured under exacting quality assurance and control standards, and are capable of meeting published specifications after being subjected to any or all of the following physical and environmental test.

| Specification                  | Test/Inspection Condition            | Reference/Spec              |
|--------------------------------|--------------------------------------|-----------------------------|
| Operating Temperature          | -0° to 50° C<br>Ambient Environment  | Individual Model Data Sheet |
| Storage Temperature            | -20° to 60° C<br>Ambient Environment | Individual Model Data Sheet |
| Operating and Storage Humidity | 5% to 85% RH (non-condensing)        | Ambient                     |
| Bench Handling Test            | Bench Top Tip 45° & Drop             | MIL-PRF-28800F              |
| Transit Drop Test              | Free Fall Drop, 20 cm (7.9 inches)   | MIL-PRF-28800F Class 3      |