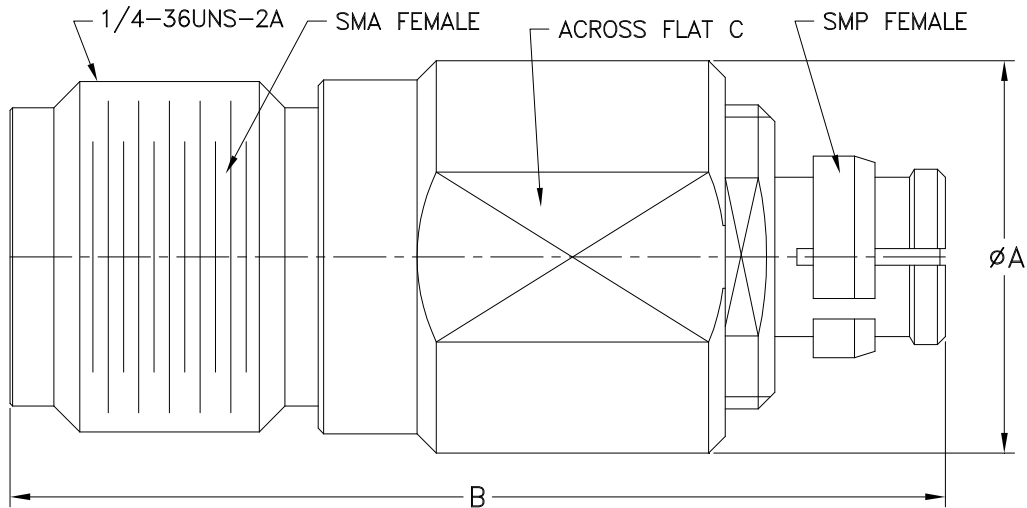


### Outline Dimensions



| CASE # | A            | B             | C             | D | E | WT. GRAM |
|--------|--------------|---------------|---------------|---|---|----------|
| DJ2142 | .28<br>(7.1) | .67<br>(17.0) | .250<br>(6.4) | - | - | 2.3      |

Dimensions are in inches (mm). Tolerances: 2 Pl.  $\pm .01$ ; 3Pl. + .005

#### Notes:

1. Case material: Stainless steel.
2. Finish: Passivation.



P.O. Box 350166, Brooklyn, New York 11235-0003 (718) 934-4500 Fax (718) 332-4661 For detailed performance specs & shopping online see Mini-Circuits web site



The Design Engineers Search Engine Provides ACTUAL Data Instantly From MINI-CIRCUITS At: [www.minicircuits.com](http://www.minicircuits.com)

RF/IF MICROWAVE COMPONENTS