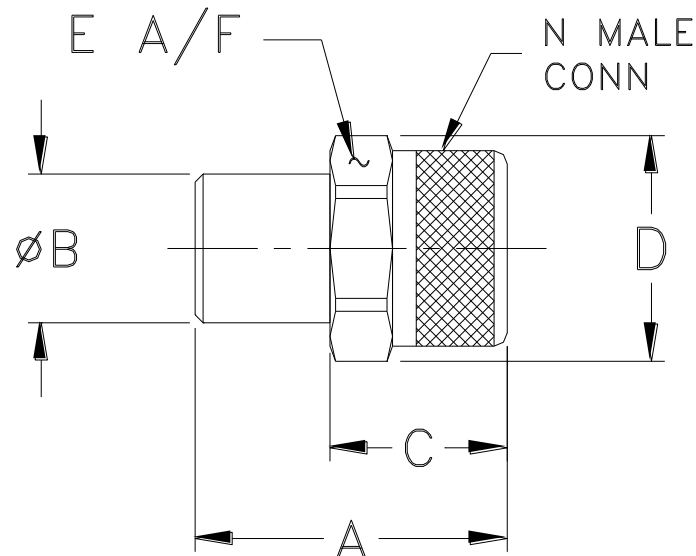


## Outline Dimensions

LL718



CASE #.	A	B	C	D	E	WT GRAMS
LL718	1.18 (30.00)	.56 (14.22)	.67 (17.02)	.85 (21.59)	.787 (20.00)	30.0

**Dimensions are in inches (mm). Tolerances: 2Pl.  $\pm .03$ ; 3Pl.  $\pm .015$**

### Notes:

1. Case Material: Brass.
2. Case Finish: Tri-metal (Cu-Sn-Zn) plate.



P.O. Box 350166, Brooklyn, New York 11235-0003 (718) 934-4500 Fax (718) 332-4661 For detailed performance specs & shopping online see Mini-Circuits web site



The Design Engineers Search Engine Provides ACTUAL Data Instantly From MINI-CIRCUITS At: [www.minicircuits.com](http://www.minicircuits.com)

RF/IF MICROWAVE COMPONENTS