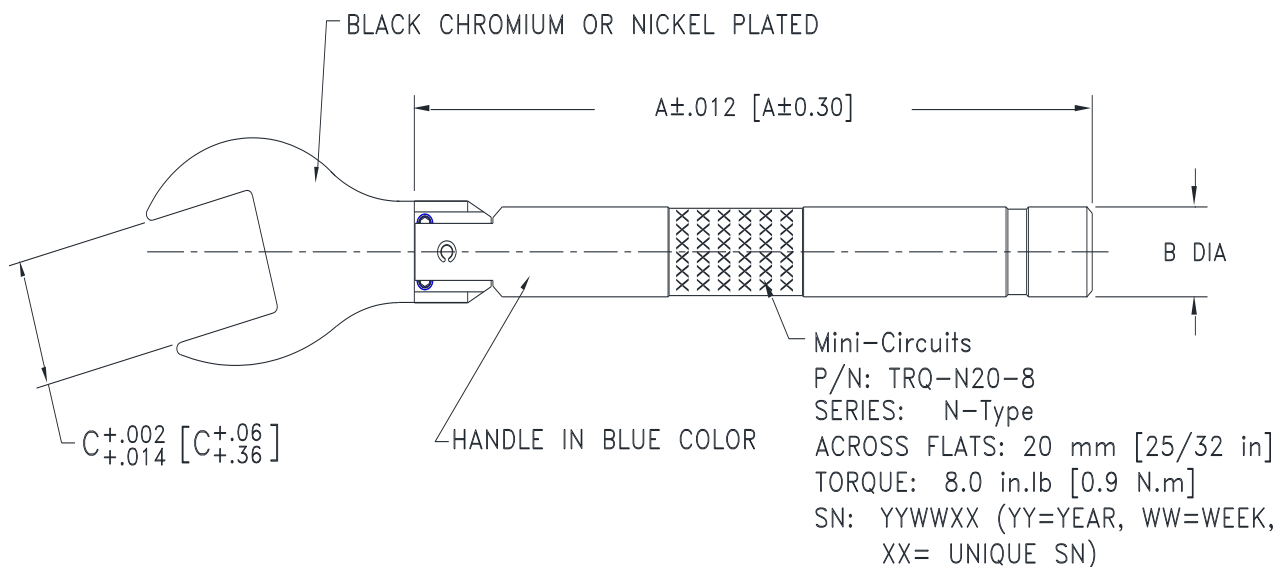


## Outline Dimensions

MY3253



CASE #	A	B	C
MY3253	5.00 [127.05]	.559 [14.2]	.787 [20.0]

Dimensions are in inches [mm]. Tolerances: 3 Pl.  $\pm .006$ [0.150] Inch[mm]

Torque Wrench Weight: 95 grams  
Torque Wrench + Box Weight: 175 grams

### Notes:

Material:

1. Stainless steel.
2. Aluminium color: Blue.
3. Carbon Steel Black Chromium or Chrome Vanadium Steel Nickel Plated.

**Mini-Circuits®**  
ISO 9001 ISO 14001 CERTIFIED

ALL NEW  
minicircuits.com

P.O. Box 350166, Brooklyn, New York 11235-0003 (718) 934-4500 Fax (718) 332-4661 For detailed performance specs & shopping online see Mini-Circuits web site



The Design Engineers Search Engine Provides ACTUAL Data Instantly From MINI-CIRCUITS At: [www.minicircuits.com](http://www.minicircuits.com)

RF/IF MICROWAVE COMPONENTS