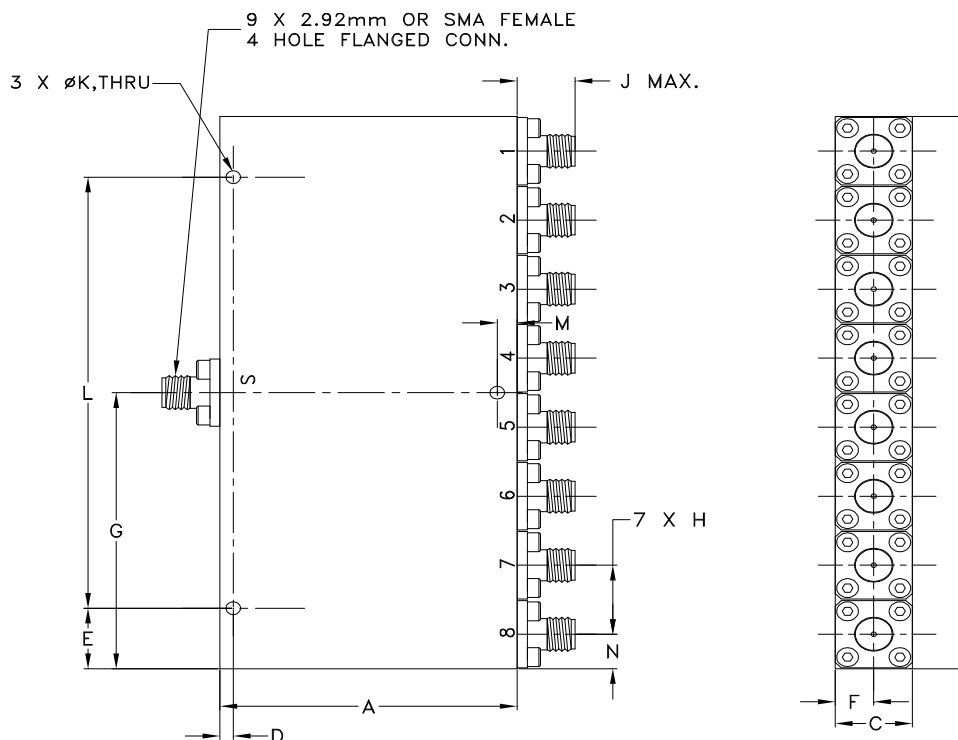


Outline Dimensions

UU2415-4



CASE#	A	B	C	D	E	F	G	H	J	K	L	M
UU2415-4	1.93 (49.00)	4.09 (104.00)	.50 (12.70)	0.087 (2.20)	.449 (11.40)	.25 (6.35)	2.05 (52.00)	.51 (13.00)	.43 (11.0)	.094 (2.40)	3.197 (81.20)	.130 (3.30)

CASE#	N	WT. GRAMS
UU2415-4	.26 (6.50)	230

Dimensions are in inches (mm). Tolerances: 2 Pl. \pm .03; 3 Pl. \pm .015

Notes:

1. Case material: Aluminum alloy.
2. Case finish: Painting Color: Blue.
3. Refer to the individual model data sheet for the type of connectors available.



P.O. Box 350166, Brooklyn, New York 11235-0003 (718) 934-4500 Fax (718) 332-4661 For detailed performance specs & shopping online see Mini-Circuits web site



The Design Engineers Search Engine Provides ACTUAL Data Instantly From MINI-CIRCUITS At: www.minicircuits.com

RF/IF MICROWAVE COMPONENTS

UU2415-4 Rev.: BA (06/03/19) M174698 File: UU2415-4.DOCX.DOC

This document and its contents are the property of Mini-Circuits