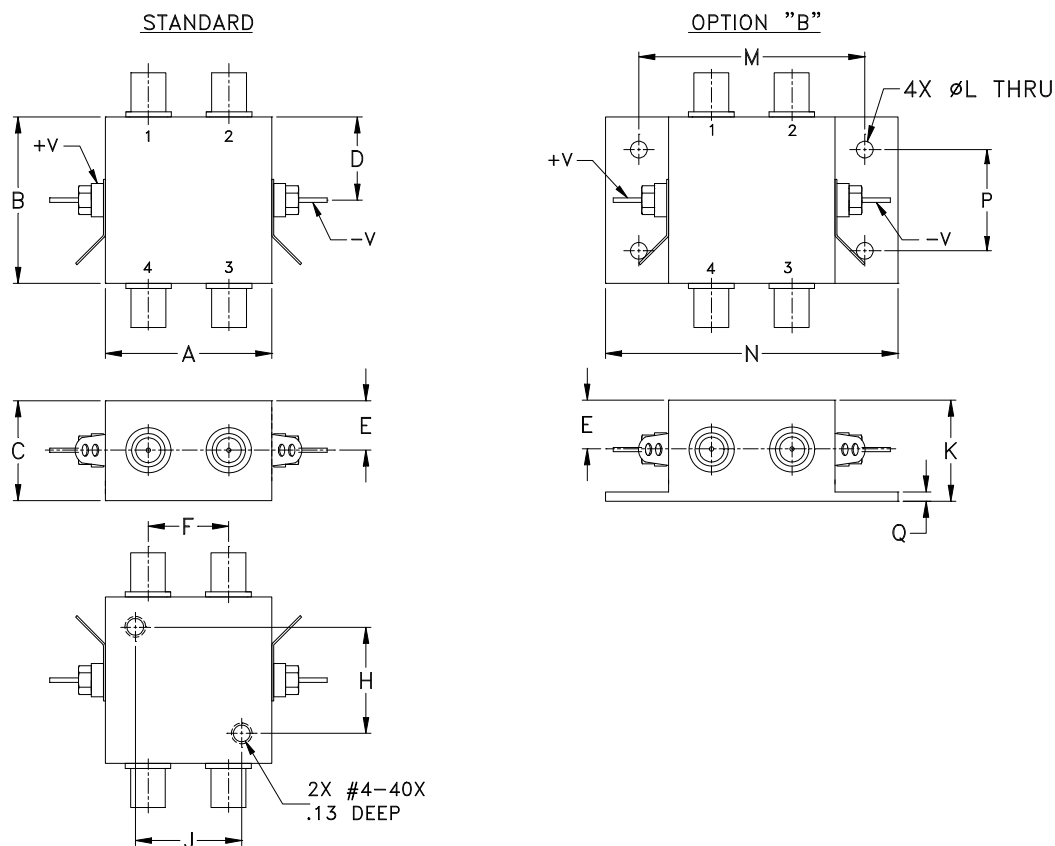


Outline Dimensions

ZZ121



CASE#	A	B	C	D	E	F	G	H	J	K	L	M	N
ZZ121	1.25 (31.75)	1.25 (31.75)	.75 (19.05)	.63 (16.00)	.38 (9.65)	.61 (15.49)	--	.800 (20.32)	.800 (20.32)	.76 (19.30)	.125 (3.18)	1.688 (42.88)	2.18 (55.37)

CASE#	P	Q	WT.GRAMS
ZZ121	.75 (19.05)	.07 (1.78)	85.0

Dimensions are in inches (mm). Tolerances: 2 Pl. $\pm .03$; 3 Pl. $\pm .015$

Notes:

- Case material: Aluminum alloy.
- Case finish:
For RoHS Case Styles: Clear chemical conversion coating, non-chrome or trivalent chrome based.
- Mounting bracket available on request. Add suffix B to part number



P.O. Box 350166, Brooklyn, New York 11235-0003 (718) 934-4500 Fax (718) 332-4661 For detailed performance specs & shopping online see Mini-Circuits web site



Provides ACTUAL Data Instantly From MINI-CIRCUITS At: www.minicircuits.com

RF/IF MICROWAVE COMPONENTS