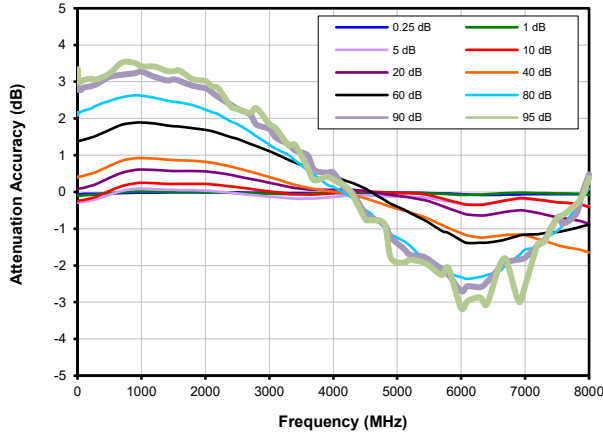


Programmable Attenuator

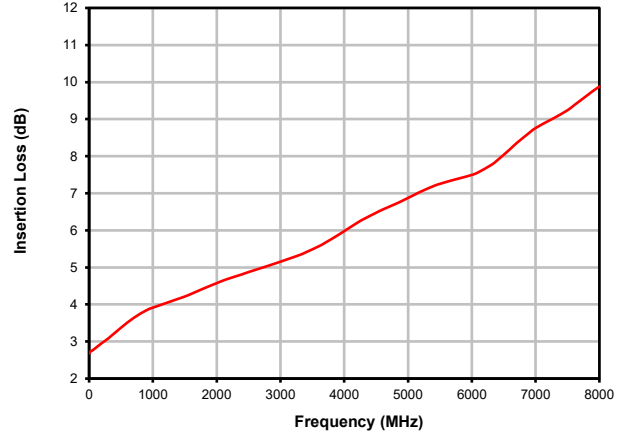
RC8DAT-8G-95

Typical Performance Curves @ 0°C

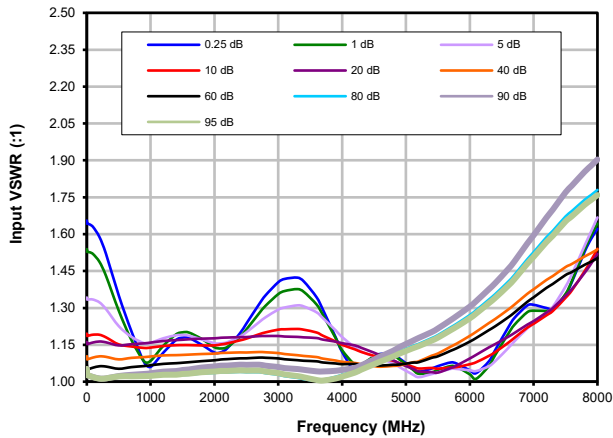
Attenuation Accuracy vs. Frequency over Attenuation settings



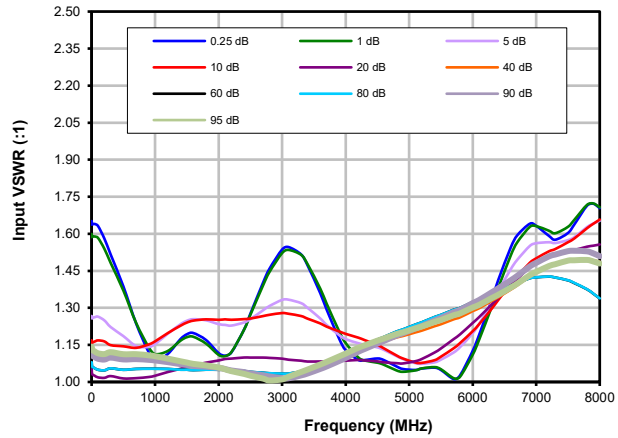
Insertion Loss



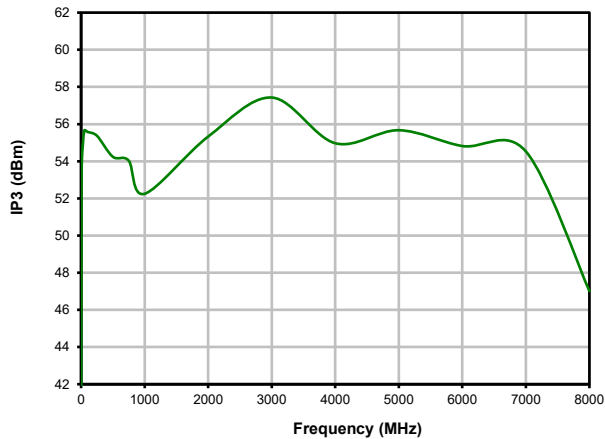
Input VSWR vs. Frequency over Attenuation settings



Output VSWR vs. Frequency over Attenuation settings



IP3 @ 0dB Attenuation



Notes

- A. Performance and quality attributes and conditions not expressly stated in this specification document are intended to be excluded and do not form a part of this specification document.
- B. Electrical specifications and performance data contained in this specification document are based on Mini-Circuits' applicable established test performance criteria and measurement instructions.
- C. The parts covered by this specification document are subject to Mini-Circuits' standard limited warranty and terms and conditions (collectively, "Standard Terms"); Purchasers of this part are entitled to the rights and benefits contained therein. For a full statement of the Standard Terms and the exclusive rights and remedies thereunder, please visit Mini-Circuits' website at www.minicircuits.com/MC/Store/terms.jsp

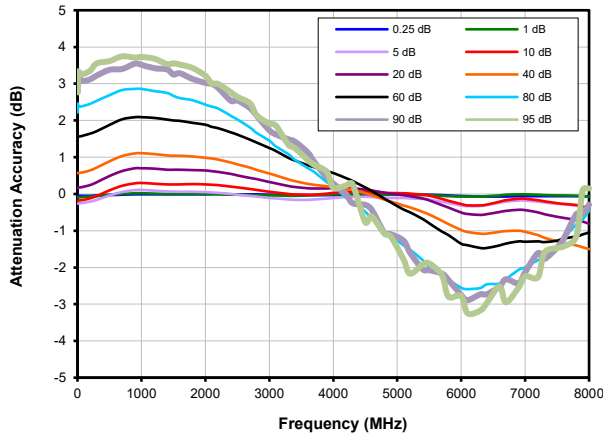


Programmable Attenuator

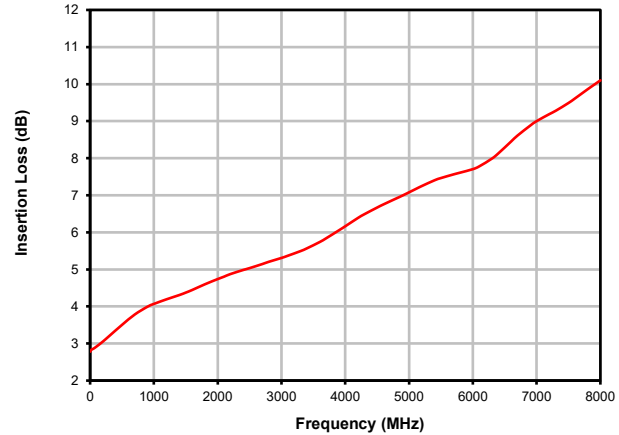
RC8DAT-8G-95

Typical Performance Curves @ 25°C

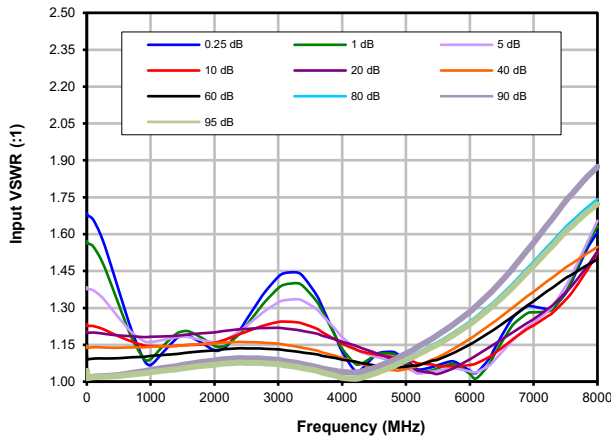
Attenuation Accuracy vs. Frequency over Attenuation settings



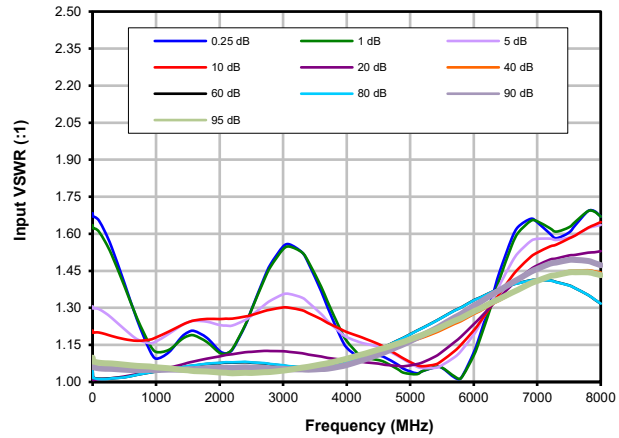
Insertion Loss



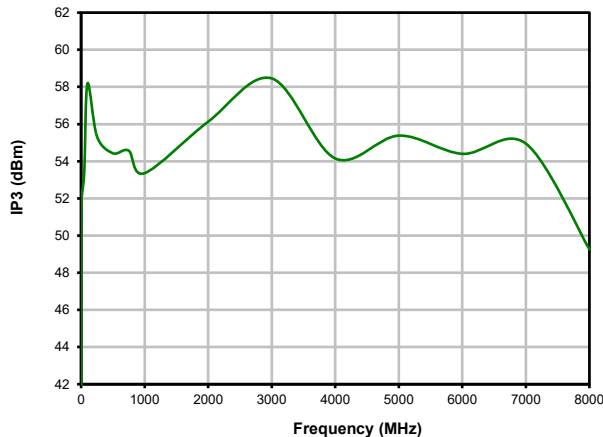
Input VSWR vs. Frequency over Attenuation settings



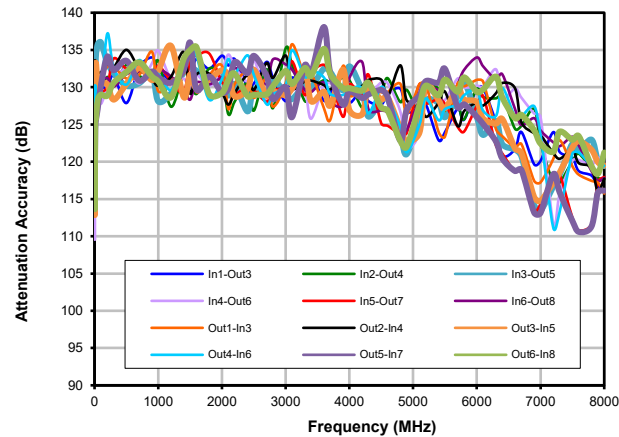
Output VSWR vs. Frequency over Attenuation settings



IP3 @ 0dB Attenuation



Cross Over Isolation vs. Frequency @ Attenuation setting 0 dB



Notes

- A. Performance and quality attributes and conditions not expressly stated in this specification document are intended to be excluded and do not form a part of this specification document.
- B. Electrical specifications and performance data contained in this specification document are based on Mini-Circuits' applicable established test performance criteria and measurement instructions.
- C. The parts covered by this specification document are subject to Mini-Circuits' standard limited warranty and terms and conditions (collectively, "Standard Terms"); Purchasers of this part are entitled to the rights and benefits contained therein. For a full statement of the Standard Terms and the exclusive rights and remedies thereunder, please visit Mini-Circuits' website at www.minicircuits.com/MC/Store/terms.jsp

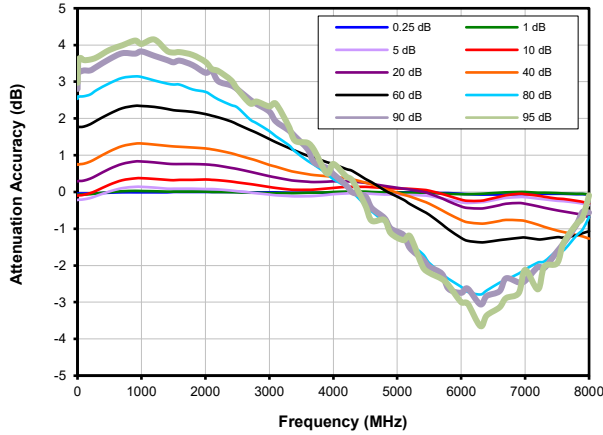


Programmable Attenuator

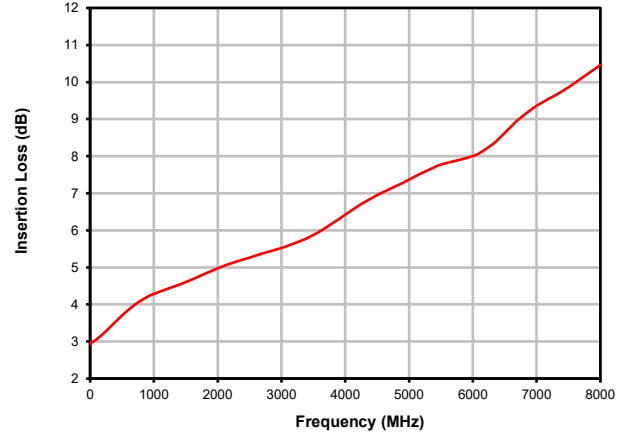
RC8DAT-8G-95

Typical Performance Curves @ 50°C

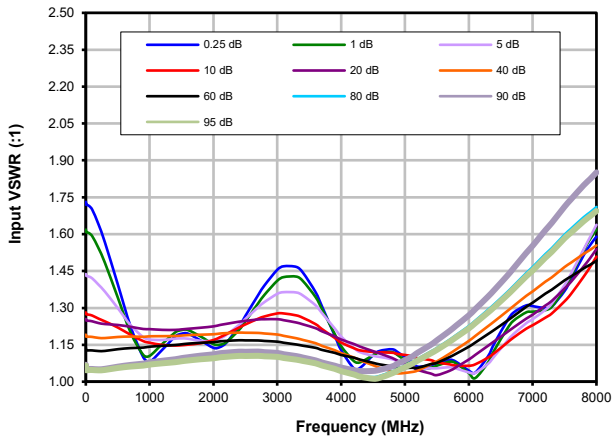
Attenuation Accuracy vs. Frequency over Attenuation settings



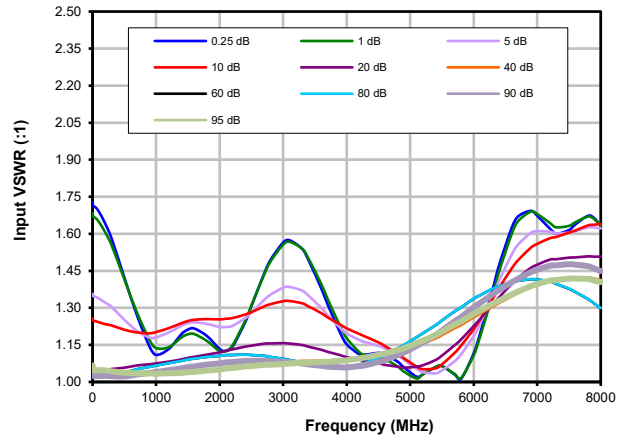
Insertion Loss



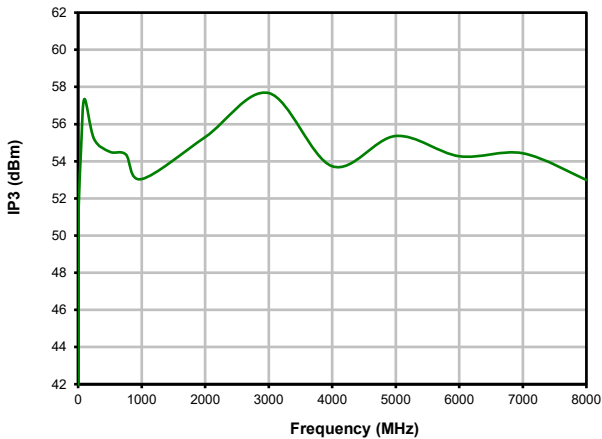
Input VSWR vs. Frequency over Attenuation settings



Output VSWR vs. Frequency over Attenuation settings



IP3 @ 0dB Attenuation



Notes

- A. Performance and quality attributes and conditions not expressly stated in this specification document are intended to be excluded and do not form a part of this specification document.
- B. Electrical specifications and performance data contained in this specification document are based on Mini-Circuits' applicable established test performance criteria and measurement instructions.
- C. The parts covered by this specification document are subject to Mini-Circuits' standard limited warranty and terms and conditions (collectively, "Standard Terms"); Purchasers of this part are entitled to the rights and benefits contained therein. For a full statement of the Standard Terms and the exclusive rights and remedies thereunder, please visit Mini-Circuits' website at www.minicircuits.com/MCStore/terms.jsp

