

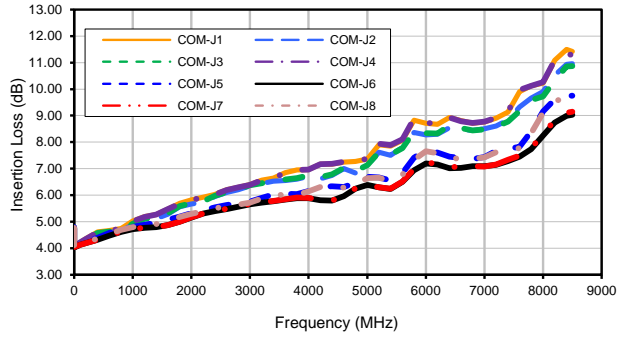
Solid State USB RF SP16T Switch

USB-1SP16T-83H

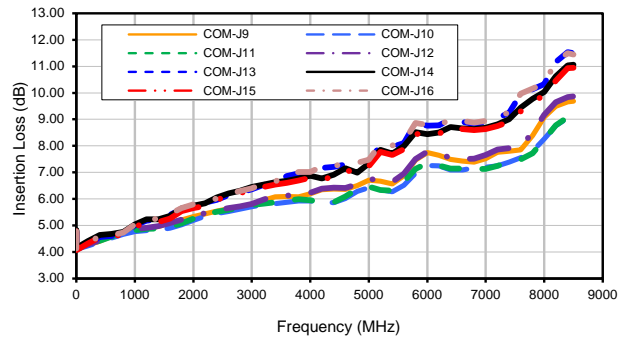
Typical Performance Curves

TEST CONDITIONS: @Temperature = 0°C, Pin=8dBm

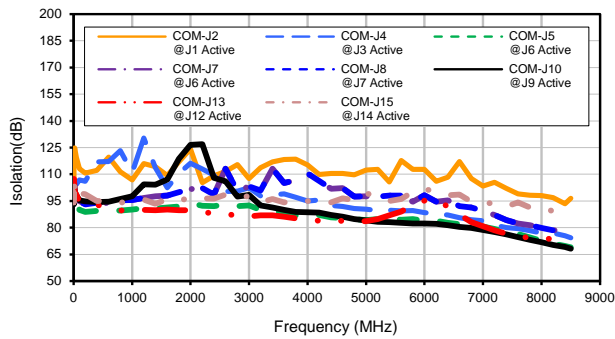
Insertion Loss (ports J1-J8)



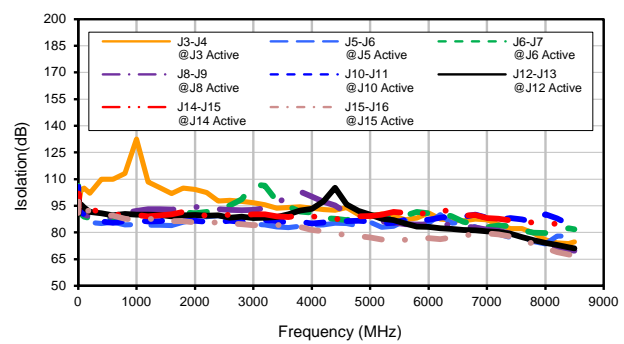
Insertion Loss (ports J9-J16)



Isolation COM to Terminated port



Isolation



Notes

- A. Performance and quality attributes and conditions not expressly stated in this specification document are intended to be excluded and do not form a part of this specification document.
- B. Electrical specifications and performance data contained in this specification document are based on Mini-Circuits' applicable established test performance criteria and measurement instructions.
- C. The parts covered by this specification document are subject to Mini-Circuits' standard limited warranty and terms and conditions (collectively, "Standard Terms"); Purchasers of this part are entitled to the rights and benefits contained therein. For a full statement of the Standard Terms and the exclusive rights and remedies thereunder, please visit Mini-Circuits' website at www.minicircuits.com/MCLStore/terms.jsp



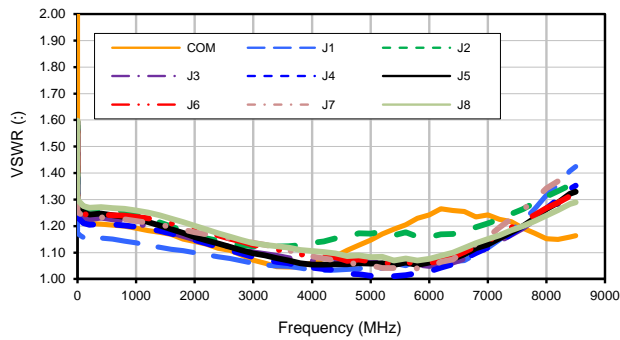
Solid State USB RF SP16T Switch

USB-1SP16T-83H

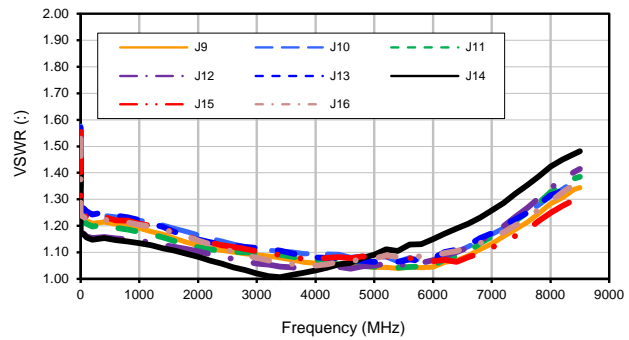
Typical Performance Curves

TEST CONDITIONS: @Temperature = 0°C, Pin=8dBm

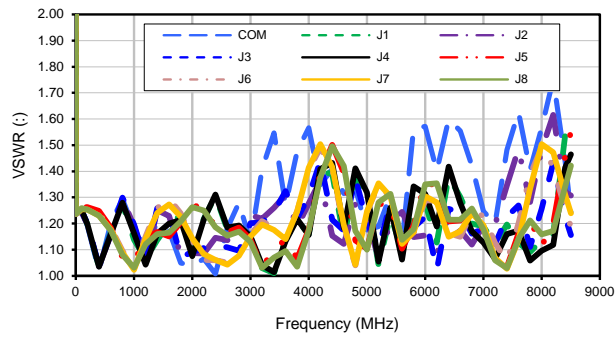
VSWR, Internally Terminated Ports



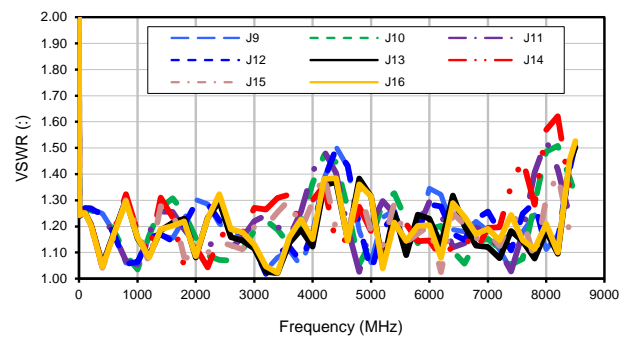
VSWR, Internally Terminated Ports



VSWR, Active Ports



VSWR, Active Ports



Notes

- A. Performance and quality attributes and conditions not expressly stated in this specification document are intended to be excluded and do not form a part of this specification document.
- B. Electrical specifications and performance data contained in this specification document are based on Mini-Circuits' applicable established test performance criteria and measurement instructions.
- C. The parts covered by this specification document are subject to Mini-Circuits' standard limited warranty and terms and conditions (collectively, "Standard Terms"); Purchasers of this part are entitled to the rights and benefits contained therein. For a full statement of the Standard Terms and the exclusive rights and remedies thereunder, please visit Mini-Circuits' website at www.minicircuits.com/MGStore/terms.jsp



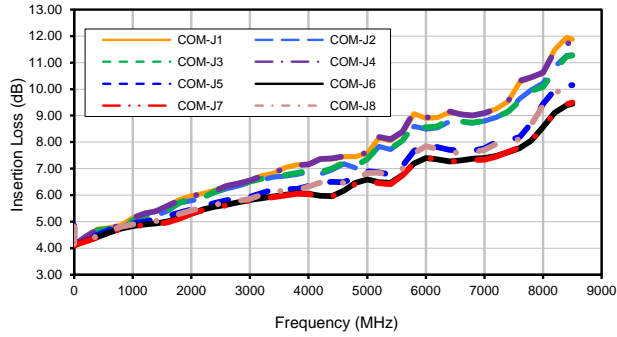
Solid State USB RF SP16T Switch

USB-1SP16T-83H

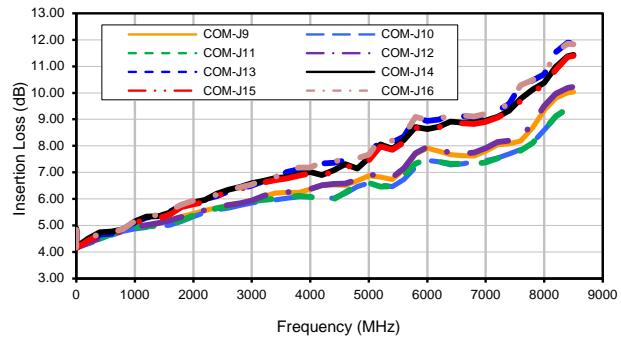
Typical Performance Curves

TEST CONDITIONS: @Temperature = +25°C, Pin=8dBm

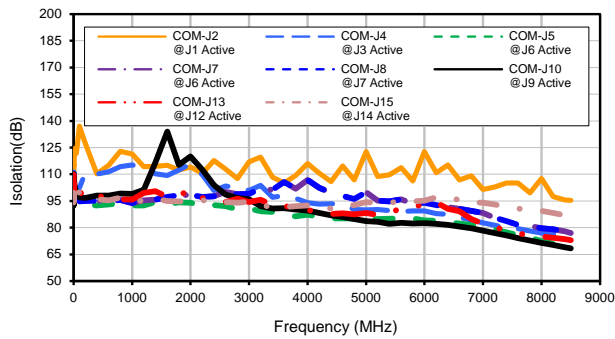
Insertion Loss (ports J1-J8)



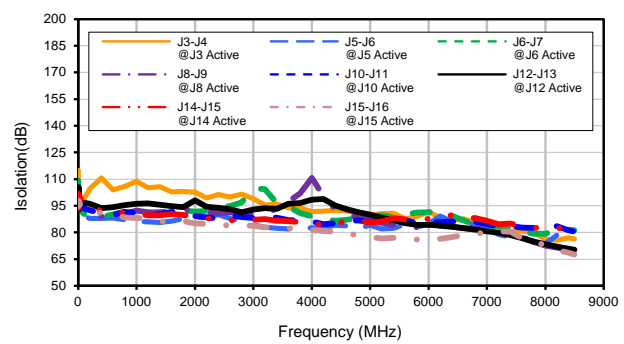
Insertion Loss (ports J9-J16)



Isolation COM to Terminated port



Isolation



Notes

- A. Performance and quality attributes and conditions not expressly stated in this specification document are intended to be excluded and do not form a part of this specification document.
- B. Electrical specifications and performance data contained in this specification document are based on Mini-Circuits' applicable established test performance criteria and measurement instructions.
- C. The parts covered by this specification document are subject to Mini-Circuits' standard limited warranty and terms and conditions (collectively, "Standard Terms"); Purchasers of this part are entitled to the rights and benefits contained therein. For a full statement of the Standard Terms and the exclusive rights and remedies thereunder, please visit Mini-Circuits' website at www.minicircuits.com/MCLStore/terms.jsp



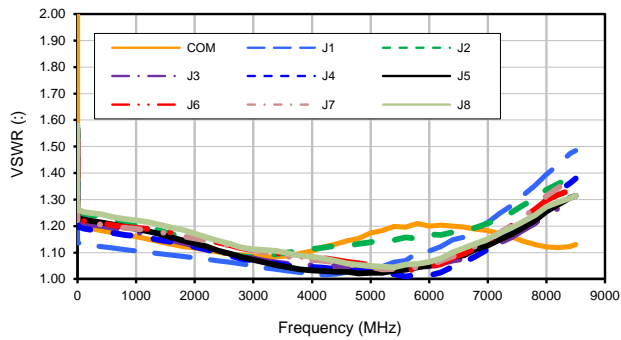
Solid State USB RF SP16T Switch

USB-1SP16T-83H

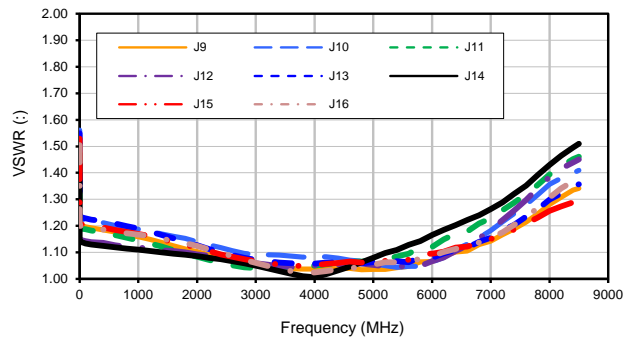
Typical Performance Curves

TEST CONDITIONS: @Temperature = +25°C, Pin=8dBm

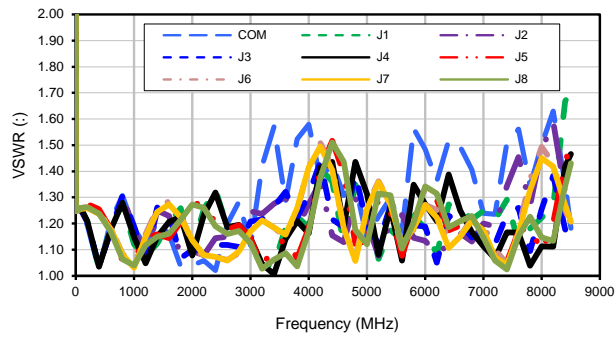
VSWR, Internally Terminated Ports



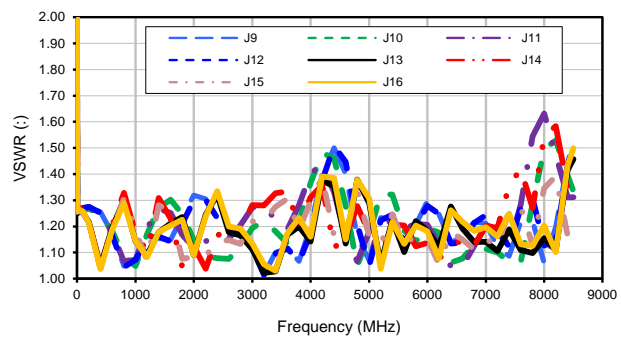
VSWR, Internally Terminated Ports



VSWR, Active Ports



VSWR, Active Ports



Notes

- A. Performance and quality attributes and conditions not expressly stated in this specification document are intended to be excluded and do not form a part of this specification document.
- B. Electrical specifications and performance data contained in this specification document are based on Mini-Circuits' applicable established test performance criteria and measurement instructions.
- C. The parts covered by this specification document are subject to Mini-Circuits' standard limited warranty and terms and conditions (collectively, "Standard Terms"); Purchasers of this part are entitled to the rights and benefits contained therein. For a full statement of the Standard Terms and the exclusive rights and remedies thereunder, please visit Mini-Circuits' website at www.minicircuits.com/MGStore/terms.jsp



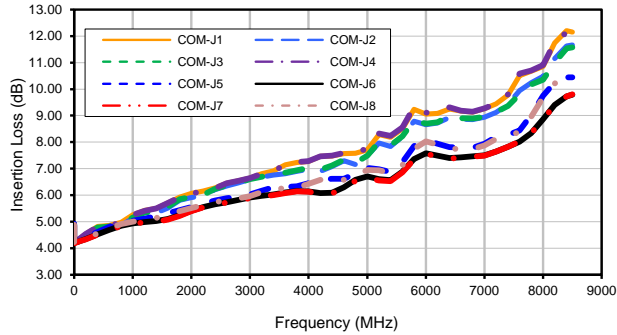
Solid State USB RF SP16T Switch

USB-1SP16T-83H

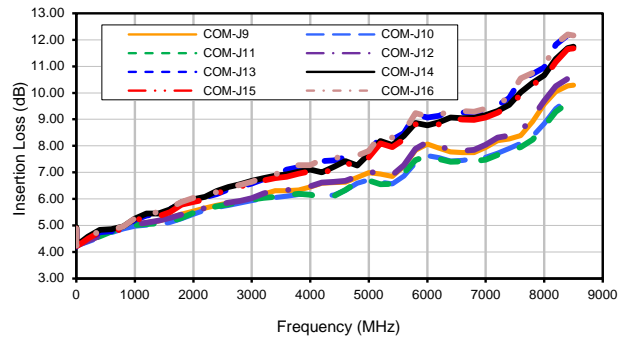
Typical Performance Curves

TEST CONDITIONS: @Temperature = +50°C, Pin=8dBm

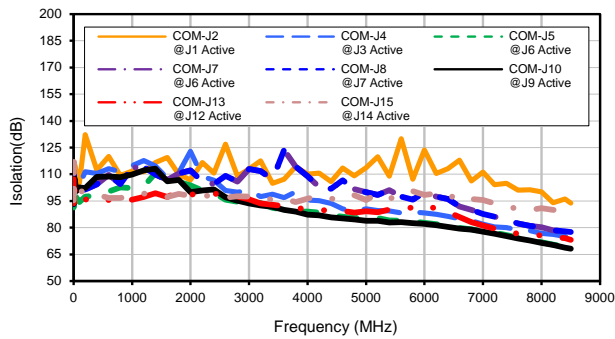
Insertion Loss (ports J1-J8)



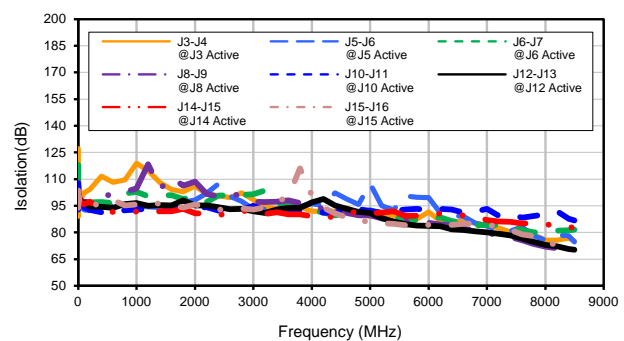
Insertion Loss (ports J9-J16)



Isolation COM to Terminated port



Isolation



Notes

- A. Performance and quality attributes and conditions not expressly stated in this specification document are intended to be excluded and do not form a part of this specification document.
- B. Electrical specifications and performance data contained in this specification document are based on Mini-Circuits' applicable established test performance criteria and measurement instructions.
- C. The parts covered by this specification document are subject to Mini-Circuits' standard limited warranty and terms and conditions (collectively, "Standard Terms"); Purchasers of this part are entitled to the rights and benefits contained therein. For a full statement of the Standard Terms and the exclusive rights and remedies thereunder, please visit Mini-Circuits' website at www.minicircuits.com/MGStore/terms.jsp



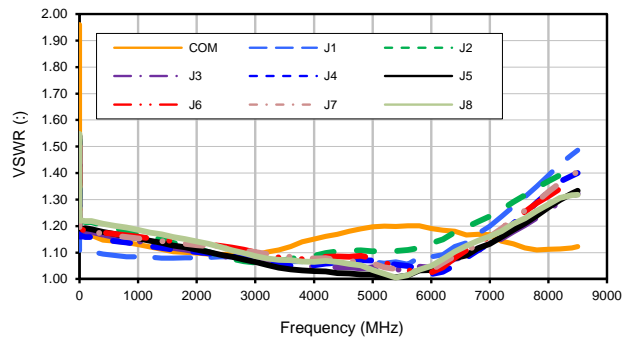
Solid State USB RF SP16T Switch

USB-1SP16T-83H

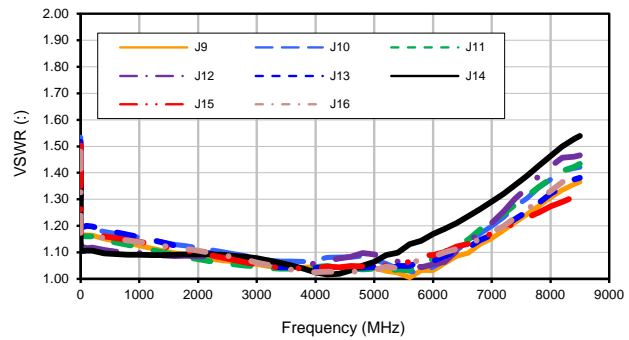
Typical Performance Curves

TEST CONDITIONS: @Temperature = +50°C, Pin=8dBm

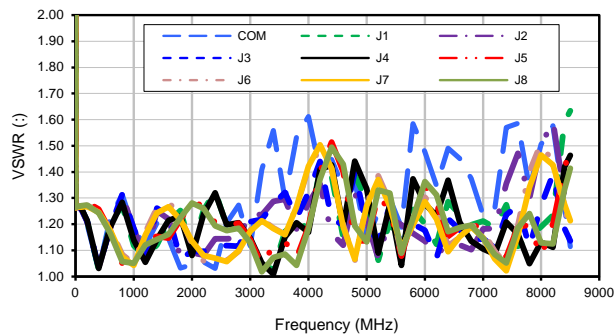
VSWR, Internally Terminated Ports



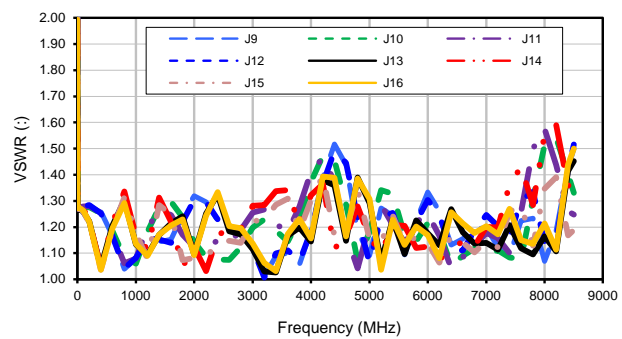
VSWR, Internally Terminated Ports



VSWR, Active Ports



VSWR, Active Ports



Notes

- A. Performance and quality attributes and conditions not expressly stated in this specification document are intended to be excluded and do not form a part of this specification document.
- B. Electrical specifications and performance data contained in this specification document are based on Mini-Circuits' applicable established test performance criteria and measurement instructions.
- C. The parts covered by this specification document are subject to Mini-Circuits' standard limited warranty and terms and conditions (collectively, "Standard Terms"); Purchasers of this part are entitled to the rights and benefits contained therein. For a full statement of the Standard Terms and the exclusive rights and remedies thereunder, please visit Mini-Circuits' website at www.minicircuits.com/MCStore/terms.jsp

