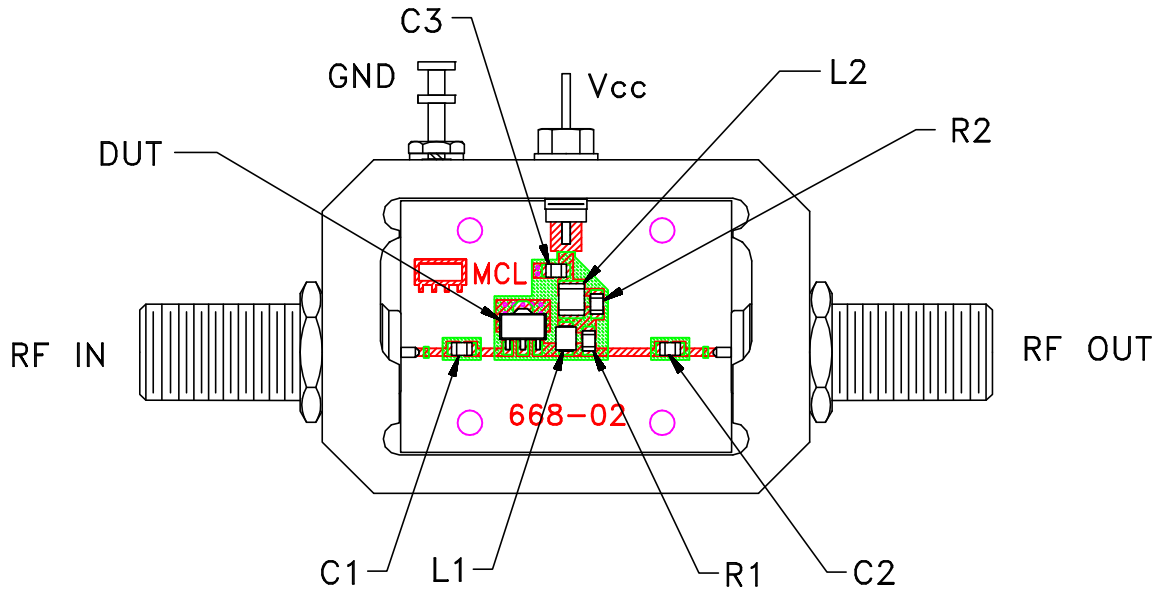
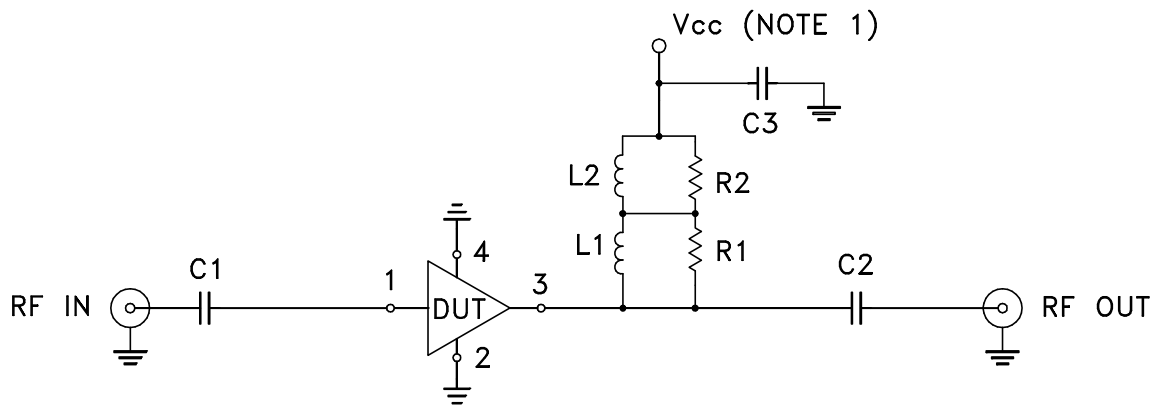


Evaluation Board and Circuit



TB-699+




COMPONENT	VALUE
DUT	PGA-106R-75+
C1,C2	.01 μ F
C3	.1 μ F
R1,R2	1210 OHM
L1	1.5 UH
L2	22UH

Schematic Diagram

NOTES:

1. Vcc voltage: +5 \pm 0.2V.
2. F Type Female 75 Ohm connectors.
3. PCB material: Rogers R04350 or equivalent, dielectric constant=3.5, dielectric thickness=.030 inch.

 **Mini-Circuits®**