



COAXIAL

Termination

ANNE-50E+

50Ω DC to 65 GHz 1.85 mm Male

THE BIG DEAL

- Ultra-Wideband, DC to 65 GHz
- Excellent Return Loss, 22 dB typ. up to 40 GHz; 20 dB typ. up to 65 GHz
- Input Power Handling up to 1W
- Mates with 2.4mm and V connectors



Generic photo used for illustration purposes only

Model No.	ANNE-50E+
Case Style	LL2587
Connectors	1.85 mm-Male

+RoHS Compliant

The +Suffix identifies RoHS Compliance. See our website for methodologies and qualifications

APPLICATIONS

- Test and Measurement Equipment
- Test Labs
- Defense and Aerospace
- 5G Applications
- Q and V band Communication Links

PRODUCT OVERVIEW

Mini-Circuits' ANNE-50E+ is an ultra-wideband 50Ω termination capable of absorbing signals up to 1W from DC to 65 GHz. It provides excellent return loss across its entire operating frequency range, effectively dissipating signal power with minimal reflections. This model has a 1.85mm-male connector, mechanically compatible with 2.4mm-female and V female connectors. The unit features rugged construction for a long life of use and comes in a passivated stainless steel case measuring only 0.69"(l) x 0.36" (dia.).

KEY FEATURES

Features	Advantages
Ultra-Wideband, DC to 65 GHz	Extremely wide frequency range provides application flexibility and makes this model ideal for broadband and multi-band use.
Good Return Loss: <ul style="list-style-type: none"> • 26 dB up to 18 GHz • 22 dB up to 40 GHz • 20 dB up to 65 GHz 	Good Return Loss minimizes signal reflections across multiple-decade frequency range.
1.85 mm Connector Mates with 2.4 mm and V Connectors	Provides flexible connection options, avoiding the need for extra adapters.
Power Handling up to 1W	ANNE-50E+ meets a wide range of system power requirements in a small device size.
Wide Operating Temperature Range, -55 to +100 °C	Withstands tough operating conditions and is suitable for use near high power components where heat rise is common.

REV. A
ECO-016342
ANNE-50E+
MCL NY
230106





COAXIAL

Termination

ANNE-50E+

50Ω DC to 65 GHz 1.85 mm Male

ELECTRICAL SPECIFICATIONS AT 25°C

Parameter	Condition (GHz)	Min.	Typ.	Max.	Unit
Frequency Range		DC	–	65	GHz
Impedance		50			Ohms
Return Loss	DC - 18	20.8	26	–	dB
	18 - 40	17.7	22	–	
	40 - 65	14.7	20	–	
Input Power ¹	DC - 65	–	–	1	W

1. At 25°C, derate linearly to 100 mW at 100°C.

ABSOLUTE MAXIMUM RATINGS¹

Parameter	Ratings
Operating Temperature	-55 °C to +100 °C
Storage Temperature	-55 °C to +100 °C

1. Permanent damage may occur if any of these limits are exceeded.



COAXIAL

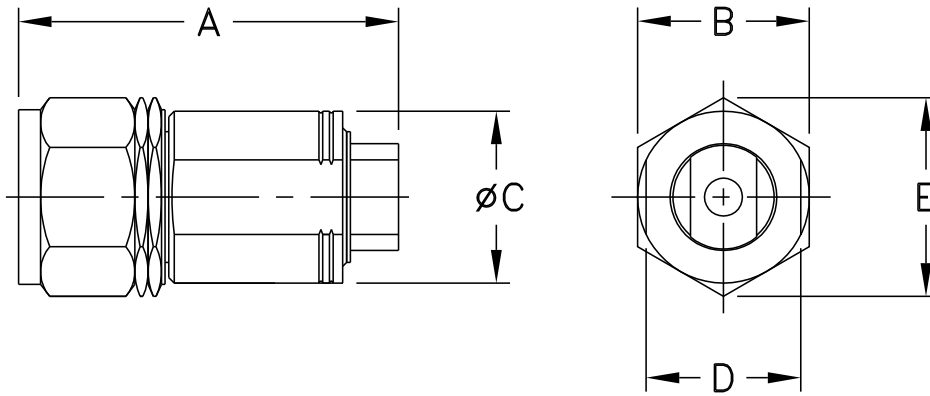
Termination

ANNE-50E+

Mini-Circuits

50Ω DC to 65 GHz 1.85 mm Male

OUTLINE DRAWING



OUTLINE DIMENSIONS ^(Inch)_(mm)

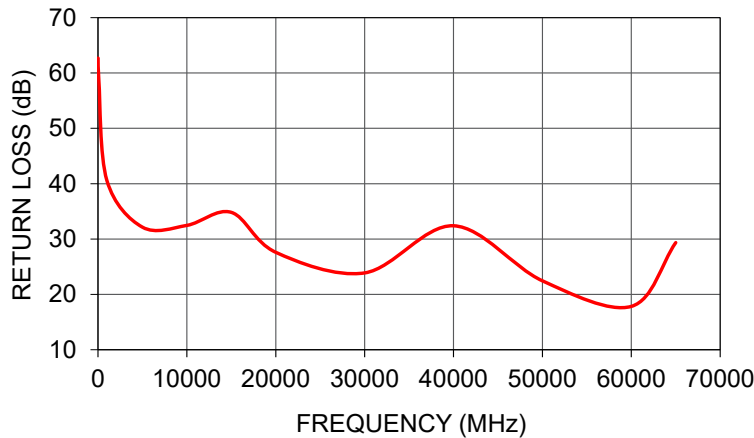
A	B	C	D	E	wt
.69	.312	.31	.281	.36	grams
17.5	7.92	7.9	7.14	9.14	4.6



TYPICAL PERFORMANCE DATA

Frequency (MHz)	Return Loss (dB)
10	62.69
100	58.55
1000	40.59
5000	32.14
10000	32.46
15000	34.82
20000	27.60
30000	23.88
40000	32.40
50000	22.45
60000	17.83
65000	29.36

ANNE-50E+
RETURN LOSS



NOTES

- A. Performance and quality attributes and conditions not expressly stated in this specification document are intended to be excluded and do not form a part of this specification document.
- B. Electrical specifications and performance data contained in this specification document are based on Mini-Circuit's applicable established test performance criteria and measurement instructions.
- C. The parts covered by this specification document are subject to Mini-Circuits standard limited warranty and terms and conditions (collectively, "Standard Terms"); Purchasers of this part are entitled to the rights and benefits contained therein. For a full statement of the standard terms and the exclusive rights and remedies thereunder, please visit Mini-Circuits' website at www.minicircuits.com/terms/viewterm.html