



COAXIAL

# Termination

## ANNEQ-50X+

50Ω DC to 20 GHz SMA-Male Quick-Turn

### THE BIG DEAL

- Ultra-Wideband, DC to 20 GHz
- Excellent Return Loss, 25 dB typ. up to 20 GHz
- Quick-Turn, 1 to 2 turns



Generic photo used for illustration purposes only

Model No.	ANNEQ-50X+
Case Style	LL2699
Connectors	SMA-Male Quick-Turn

### APPLICATIONS

- Test and Measurement Equipment
- Test Labs

**+RoHS Compliant**

The +Suffix identifies RoHS Compliance. See our website for methodologies and qualifications

### PRODUCT OVERVIEW

Mini-Circuits' ANNEQ-50X+ is an ultra-wideband 50Ω quick turn termination that enables quick connect and disconnect in test system which saves time. It provides excellent return loss across its entire operating frequency range, effectively dissipating signal power with minimal reflections.

### KEY FEATURES

Features	Advantages
Quick Turn: 1 to 2 turns	Ideal for test application Quick connect/disconnect reduces test time and cost.
Ultra-Wideband, DC to 20 GHz	Extremely wide frequency range provides application flexibility and makes this model ideal for broadband and multi-band use.
Good Return Loss: <ul style="list-style-type: none"> <li>• 35 dB typ. up to 4 GHz</li> <li>• 24 dB typ. up to 20 GHz</li> </ul>	Good return loss minimizes signal reflections across multiple-decade frequency range.
Power Handling up to 1W at 25°C	ANNEQ-50X+ meets a wide range of system power requirements.
Wide Operating Temperature Range, -55 to +100 °C	Withstands tough operating conditions and is suitable for use near high power componentry where heat rise is common.

REV. A  
ECO-016342  
ANNEQ-50X+  
MCL NY  
230106





COAXIAL

# Termination

## ANNEQ-50X+

50Ω DC to 20 GHz SMA-Male Quick-Turn

### ELECTRICAL SPECIFICATIONS AT 25°C

Parameter	Condition (GHz)	Min.	Typ.	Max.	Unit
Frequency Range		DC	–	20	GHz
Impedance			50		Ohms
Return Loss	DC - 4	32	47	–	dB
	4 - 20	22	30	–	
Input Power <sup>1</sup>	DC - 20	–	–	1	W

1. To 100°C, derate linearly to 325 mW at 100°C.

### ABSOLUTE MAXIMUM RATINGS<sup>1</sup>

Parameter	Ratings
Operating Temperature	-55 °C to +100 °C
Storage Temperature	-55 °C to +100 °C

1. Permanent damage may occur if any of these limits are exceeded.



COAXIAL

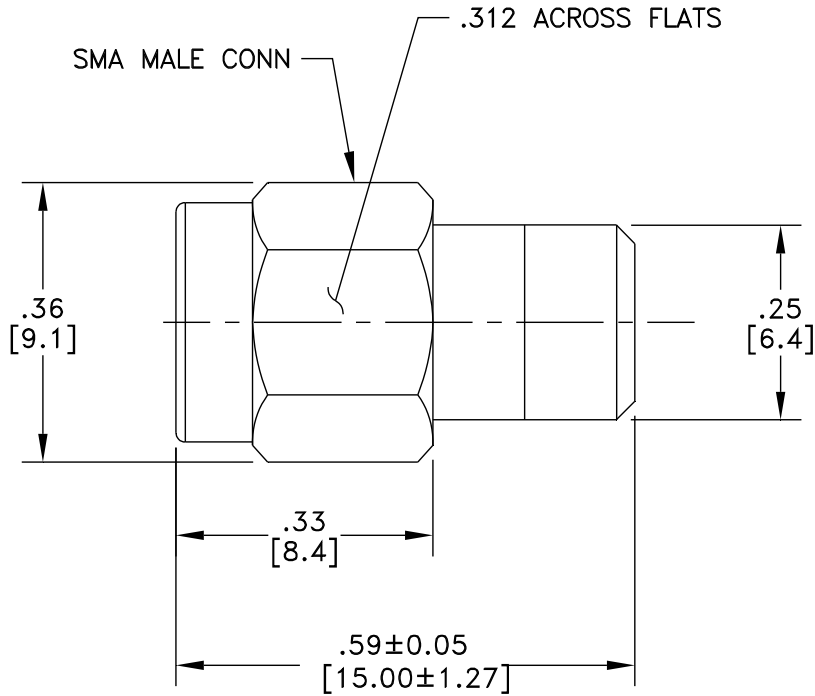
# Termination

ANNEQ-50X+

Mini-Circuits

50Ω DC to 20 GHz SMA-Male Quick-Turn

## OUTLINE DRAWING



Weight: 4.0 grams

Dimensions are in inches [mm]. Tolerances: 2 PL. ± .03; 3 PL ± .010



COAXIAL

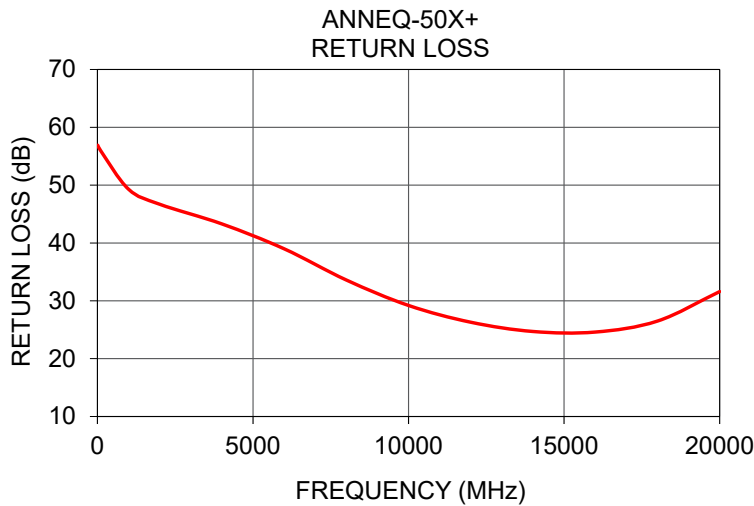
# Termination

## ANNEQ-50X+

50Ω DC to 20 GHz SMA-Male Quick-Turn

### TYPICAL PERFORMANCE DATA

Frequency (MHz)	Return Loss (dB)
10	56.9
100	56.0
1000	49.3
2000	46.7
4000	43.3
6000	39.0
8000	33.6
10000	29.2
12000	26.3
14000	24.7
16000	24.6
18000	26.5
20000	31.6



#### NOTES

- A. Performance and quality attributes and conditions not expressly stated in this specification document are intended to be excluded and do not form a part of this specification document.
- B. Electrical specifications and performance data contained in this specification document are based on Mini-Circuit's applicable established test performance criteria and measurement instructions.
- C. The parts covered by this specification document are subject to Mini-Circuits standard limited warranty and terms and conditions (collectively, "Standard Terms"); Purchasers of this part are entitled to the rights and benefits contained therein. For a full statement of the standard terms and the exclusive rights and remedies thereunder, please visit Mini-Circuits' website at [www.minicircuits.com/terms/viewterm.html](http://www.minicircuits.com/terms/viewterm.html)

