

Plug-in

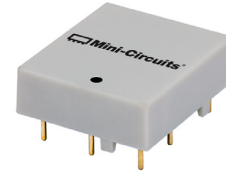
# Diplexer

## DPLC-2025A0M+

75Ω 5 to 1220 MHz  
(5-204, 258-1220 MHz)

### The Big Deal

- Plug-in design
- Field replaceable
- Low insertion loss
- Excellent return loss, 24 dB typ.
- Low group delay variation in passband
- DOCSIS 3.1 standard



Generic photo used for illustration purposes only  
CASE STYLE: QC2228

### Product Overview

DPLC-2025A0M+ is a high performance field replaceable plug-in diplexer with the lowpass port at 5-204 MHz and highpass port at 258-1220 MHz. Excellent return loss combined with high out of channel rejection makes it a ideal part in cable TV and multiband radio systems

DPLC-2025A0+ and DPLC-2025A0M+ are both mirrored versions of each other to enable easy routing.

### Key Features

Feature	Advantages
Low passband insertion loss	Ensures low signal loss through both the channels.
Excellent Stopband rejection	Co-channel rejection of 50dB typical ensures unwanted spurious are eliminated.
Excellent return loss at 5-204 and 258-1220 MHz	This makes signal transmission with very less reflection and well-matched with the adjacent component used in the system.

#### Notes

- A. Performance and quality attributes and conditions not expressly stated in this specification document are intended to be excluded and do not form a part of this specification document.  
B. Electrical specifications and performance data contained in this specification document are based on Mini-Circuit's applicable established test performance criteria and measurement instructions.  
C. The parts covered by this specification document are subject to Mini-Circuits standard limited warranty and terms and conditions (collectively, "Standard Terms"); Purchasers of this part are entitled to the rights and benefits contained therein. For a full statement of the Standard Terms and the exclusive rights and remedies thereunder, please visit Mini-Circuits' website at [www.minicircuits.com/MCLStore/terms.jsp](http://www.minicircuits.com/MCLStore/terms.jsp)



# Plug-in Diplexer

75Ω 5 to 1220 MHz (5-204, 258-1220 MHz)

## Maximum Ratings

Operating Temperature -40° to 85°C

Storage Temperature -55°C to 100°C

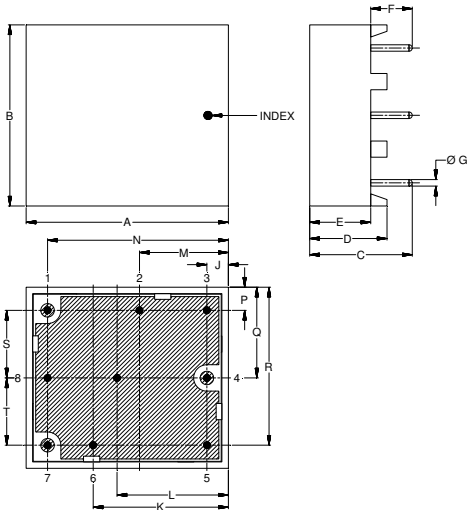
RF Power Input 30dBm Max.

Permanent damage may occur if any of these limits are exceeded. These ratings are not intended for continuous normal operation

## Pin Connections

HIGH PASS PORT	1
LOW PASS PORT	7
COMMON PORT	4
GROUND	2,3,5,6,8,9

## Outline Drawing



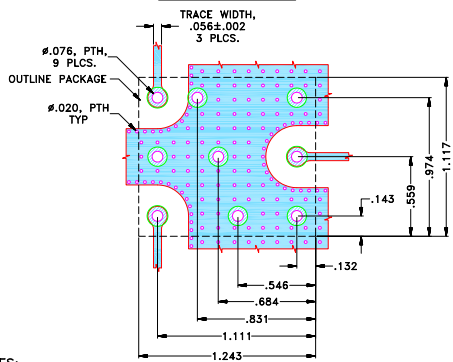
## Outline Dimensions (inch/mm)

A	B	C	D	E	F	G	H	J	K
1.243	1.117	.630	.475	.375	.255	.040	--	.132	.831
31.56	28.36	16.00	12.07	9.53	6.48	1.02	--	3.35	21.10
L	M	N	P	Q	R	S	T	Wt.	
.684	.546	1.111	.143	.559	.974	.417	.415	grams	
17.37	13.87	28.22	3.63	14.21	24.74	10.58	10.53	7	

Note: Please refer to case style drawing for details

**Demo Board MCL P/N: TB-929+**  
**Suggested PCB Layout (PL-495)**

SUGGESTED MOUNTING CONFIGURATION FOR  
QC2228 CASE STYLE



## NOTES:

- TRACE WIDTH IS SHOWN FOR IT180, WITH DIELECTRIC THICKNESS .059"±.005", COPPER: 1/2 Oz EACH SIDE. FOR OTHER MATERIALS TRACE WIDTH MAY NEED TO BE MODIFIED.
- BOTTOM SIDE OF THE PCB IS CONTINUOUS GROUND PLANE.

- DENOTES PCB COPPER LAYOUT WITH SMOBC (SOLDER MASK OVER BARE COPPER)
- DENOTES COPPER LAND PATTERN FREE OF SOLDERMASK

## Notes

- Performance and quality attributes and conditions not expressly stated in this specification document are intended to be excluded and do not form a part of this specification document.
- Electrical specifications and performance data contained in this specification document are based on Mini-Circuit's applicable established test performance criteria and measurement instructions.
- The parts covered by this specification document are subject to Mini-Circuit's standard limited warranty and terms and conditions (collectively, "Standard Terms"); Purchasers of this part are entitled to the rights and benefits contained therein. For a full statement of the Standard Terms and the exclusive rights and remedies thereunder, please visit Mini-Circuit's website at [www.minicircuits.com/MCLStore/terms.jsp](http://www.minicircuits.com/MCLStore/terms.jsp)



[www.minicircuits.com](http://www.minicircuits.com) P.O. Box 350166, Brooklyn, NY 11235-0003 (718) 934-4500 sales@minicircuits.com

# DPLC-2025A0M+



Generic photo used for illustration purposes only  
CASE STYLE: QC2228

**+RoHS Compliant**

The +Suffix identifies RoHS Compliance. See our web site for RoHS Compliance methodologies and qualifications

## Features

- Low insertion loss
- 75Ω Impedance
- Excellent return loss 24 dB typ.
- Low group delay variation
- High rejection

## Applications

- Cable TV systems (DOCSIS 3.1 standard)
- Multiband radio systems



**CAUTION NOTE:** Not designed for reflow process.

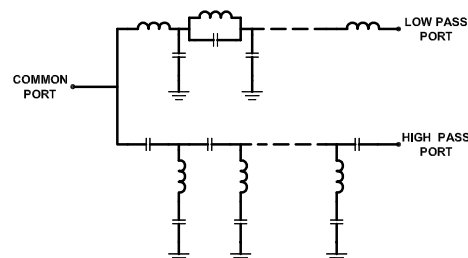
## Electrical Specifications at 25°C

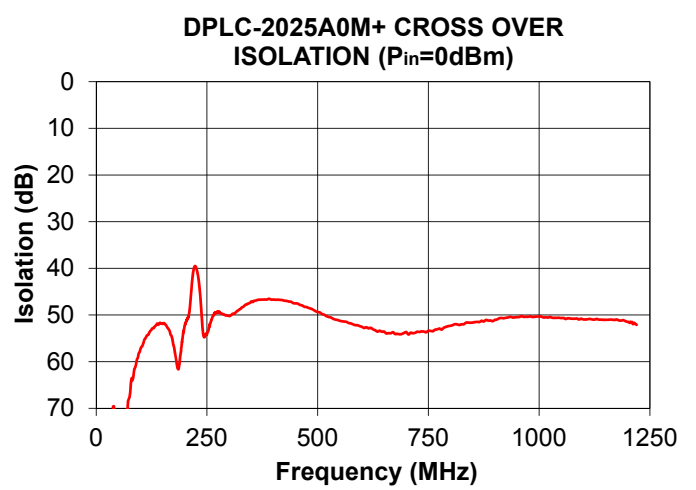
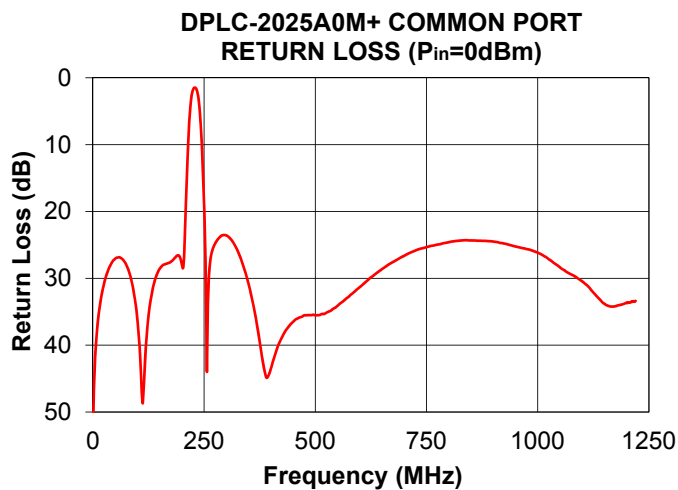
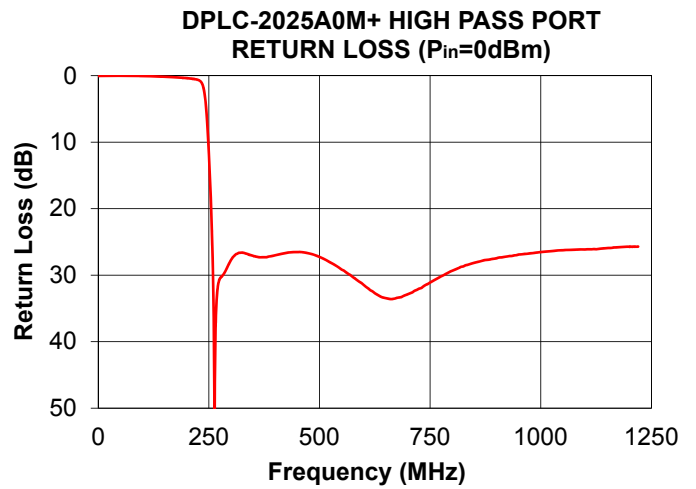
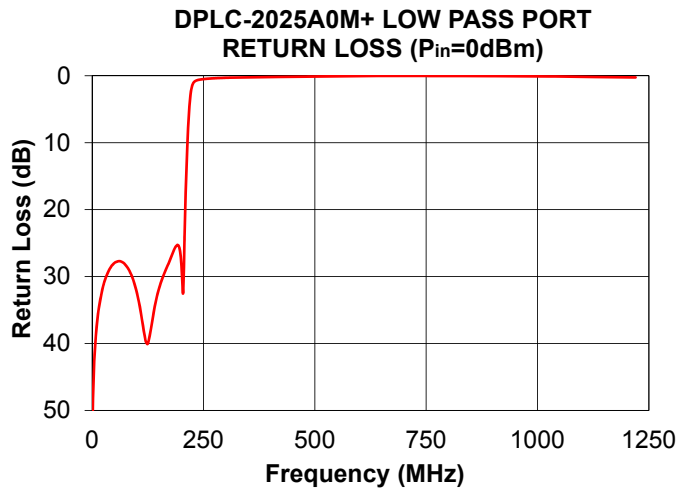
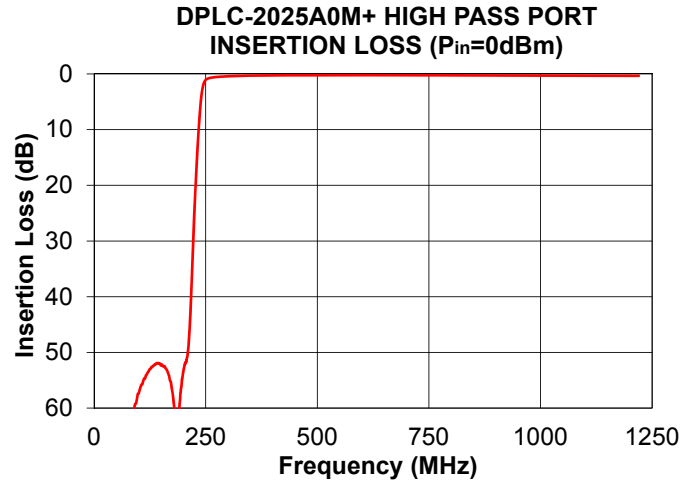
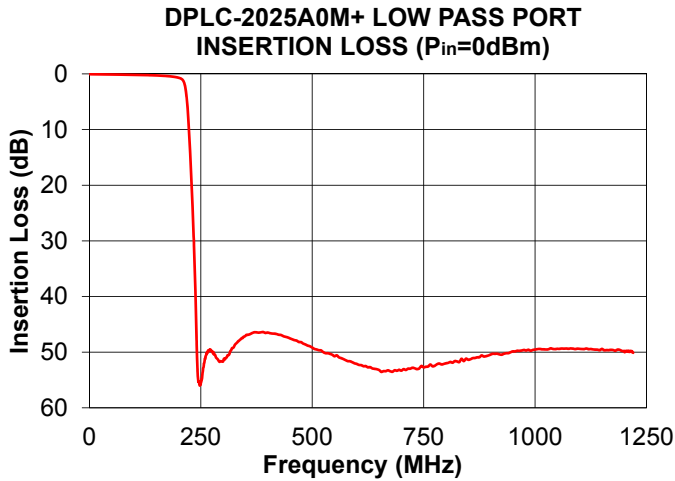
Parameter	Port	Frequency (MHz)	Min.	Typ.	Max.	Unit	
Pass Band	Insertion Loss	Low Pass	5-204	-	1.0	1.2	dB
		High Pass	258-1220	-	1.0	1.2	
	Return Loss	Low Pass	5-204	20	24	-	dB
			258-1000	20	24	-	
		High Pass	1000-1220	20	24	-	
			Common	5-204	20	24	
Stop Band Isolation	Low Pass	258-1220	42	45	-	dB	
		High Pass	5-204	45	50		-
	Cross over	204-258	35	40	-		

## Typical Performance Data at 25°C

FREQUENCY (MHz)	INSERTION LOSS (dB)			RETURN LOSS (dB)	
	Low Pass Port	High Pass Port	Common Port	Low Pass Port	High Pass Port
1.0	0.04	89.49	50.90	52.51	0.04
5.0	0.06	83.48	41.96	42.34	0.03
201.0	0.71	52.91	28.24	28.81	0.38
202.5	0.74	52.36	28.49	30.83	0.39
204.0	0.79	52.12	27.89	32.55	0.40
217.0	3.33	40.75	6.33	6.05	0.51
222.0	8.21	30.10	2.64	2.29	0.57
225.0	12.49	24.22	1.79	1.41	0.62
227.0	15.71	20.71	1.55	1.11	0.67
229.5	20.11	16.70	1.47	0.89	0.76
235.0	31.61	9.13	2.16	0.68	1.22
242.0	51.87	3.01	6.54	0.57	3.58
245.0	55.27	1.87	10.23	0.54	5.85
250.0	55.59	1.08	18.91	0.50	11.59
258.0	51.84	0.75	35.99	0.44	26.03
259.0	51.27	0.73	32.97	0.44	28.81
263.0	50.16	0.67	27.93	0.42	54.19
265.0	49.93	0.64	26.89	0.41	38.73
269.0	49.73	0.60	25.71	0.39	32.52
271.0	49.65	0.58	25.35	0.39	31.42
275.0	49.89	0.55	24.80	0.37	30.52
500.0	49.18	0.23	35.52	0.11	27.26
600.0	52.12	0.23	31.32	0.04	31.47
750.0	52.74	0.25	25.32	0.02	31.10
1000.0	49.54	0.30	26.16	0.08	26.53
1100.0	49.40	0.31	30.45	0.16	26.14
1150.0	49.42	0.32	33.82	0.20	25.93
1218.0	49.94	0.33	33.50	0.25	25.70
1220.0	50.11	0.33	33.39	0.25	25.70

## Functional Schematic





Notes

- A. Performance and quality attributes and conditions not expressly stated in this specification document are intended to be excluded and do not form a part of this specification document.
- B. Electrical specifications and performance data contained in this specification document are based on Mini-Circuit's applicable established test performance criteria and measurement instructions.
- C. The parts covered by this specification document are subject to Mini-Circuits standard limited warranty and terms and conditions (collectively, "Standard Terms"); Purchasers of this part are entitled to the rights and benefits contained therein. For a full statement of the Standard Terms and the exclusive rights and remedies thereunder, please visit Mini-Circuits' website at [www.minicircuits.com/MCLStore/terms.jsp](http://www.minicircuits.com/MCLStore/terms.jsp)

