

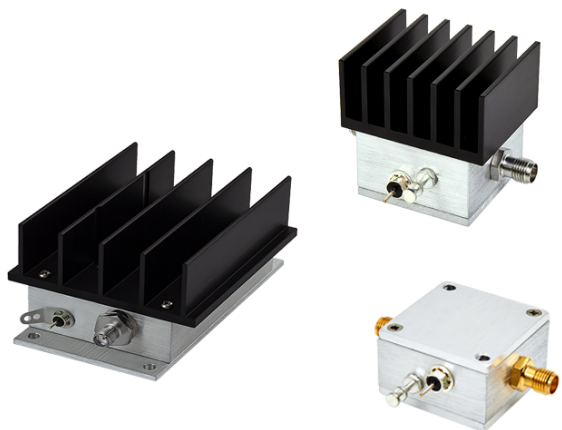


## DESIGNER'S KIT K-ZFL

# Wideband Amplifiers

Mini-Circuits

50Ω 2.5 kHz to 2000 MHz



### ZHL/ZFL FEATURES

#### ZHL-6A+

- Output pwr. +22dBm max.
- High Gain
- High IP3
- Includes heat sink
- BNC Female connectors

#### ZFL-1000+

- Output power +9dBm max.
- Rugged shielded case
- SMA Female connectors

#### ZFL-2000+

- Output power +16dBm max.
- High gain
- Unconditionally stable
- Includes heat sink
- SMA Female connectors

MINI-CIRCUITS DESIGNER'S KITS  
**SPEED UP**  
THE SOLUTION



### K-ZFL ELECTRICAL SPECIFICATIONS

(kit includes 3 models, 1 of each, 3 total)

Model	Frequency (MHz) $f_L$ - $f_U$	Gain (dB)			Maximum Power		Dynamic Range		VSWR (:1) Typ.		DC Power	
		Typ.	Min.	Flatness Max.	Output (1dB Compr.)	Input (no damage)	NF (dB) Typ.	IP3 (dBm) Typ.	In	Out	Volt (V) Nom.	Current (mA) Max.
ZHL-6A+	0.0025-500	25	21	±1.2	+22	+10	9.5	+34	1.8	2.0	24	350
ZFL-1000+	0.1-1000	-	17	±0.7	+9	+5	6.0	+18	1.5	2.1	15	105
ZFL-2000+	10-2000	-	20	±1.5	+16 <sup>1</sup>	+5	7.0	+25	2.0	2.0	15	120

Protected under U.S. Patent 6,943,629

1. Open load is not recommended, potentially can cause damage, with no load derate max. input power by 20dB.

