

RACK-MOUNTED

# Adapter Patch Panel

## ZT-182

Mini-Circuits

50Ω DC to 11 GHz N-Type Female

### THE BIG DEAL

- Convenient panel-mounted design
- Excellent VSWR
- Flat frequency response

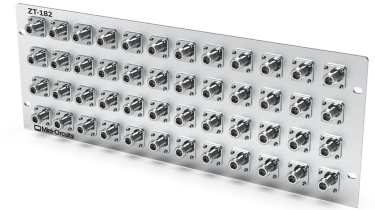
### APPLICATIONS

- Production test set-ups
- Simplification of cable runs
- Interconnection of RF cables & equipment
- Cellular base-station testing

### PRODUCT OVERVIEW

Mini-Circuits panel-mounted structures provide clean, organized management of cable runs and connections in complex, high-volume test setups. Multiple connector adapters, power splitters, directional couplers and other essential RF components and test accessories can be integrated efficiently within the test system. Custom configurations are available upon request.

ZT-182 integrates 48 precision N-Type connector adapters (female to female) on to a 4U panel.



Generic photo used for illustration purposes only

<b>Model No.</b>	ZT-182
<b>Case Style</b>	YF2075
<b>Connectors</b>	N-Type Female

#### RoHS Compliant

See our website for RoHS Compliance methodologies and qualifications

### ELECTRICAL SPECIFICATIONS AT 25°C

Parameter	Frequency (GHz)	Min.	Typ.	Max.	Unit
Frequency	-	DC	-	11	GHz
Insertion Loss	DC - 6	-	0.1	-	dB
Return Loss	DC - 6	-	35	-	dB
	6 - 11	-	30	-	

### MECHANICAL & ENVIRONMENTAL SPECIFICATIONS

<b>Dimensions</b>	19" (W) x 4U (H)			
<b>Case Style</b>	YF2075			
<b>Case Material</b>	Aluminum (with protective coating to prevent corrosion)			
<b>RF Connectors</b>	<b>Face</b>	<b>Connector</b>	<b>Quantity</b>	<b>Port Labels</b>
	Front	N-Type Female	48	01-48
	Rear	N-Type Female	48	01-48
<b>Panel Marking</b>	<b>Front Panel</b>		<b>Rear Panel</b>	
	<ul style="list-style-type: none"> <li>• ZT-182</li> <li>• N-Type Patch Panel</li> </ul>		<ul style="list-style-type: none"> <li>• CE / EAC / UKCA</li> <li>• Serial number / date code / model name</li> </ul>	
<b>Panel Items</b>	<ul style="list-style-type: none"> <li>• Carry handles</li> </ul>			
<b>Temperature</b>	Operating: 0 to +50 °C			

REV. A  
ECO-015207  
ZT-182  
MCL NY  
220926





RACK-MOUNTED

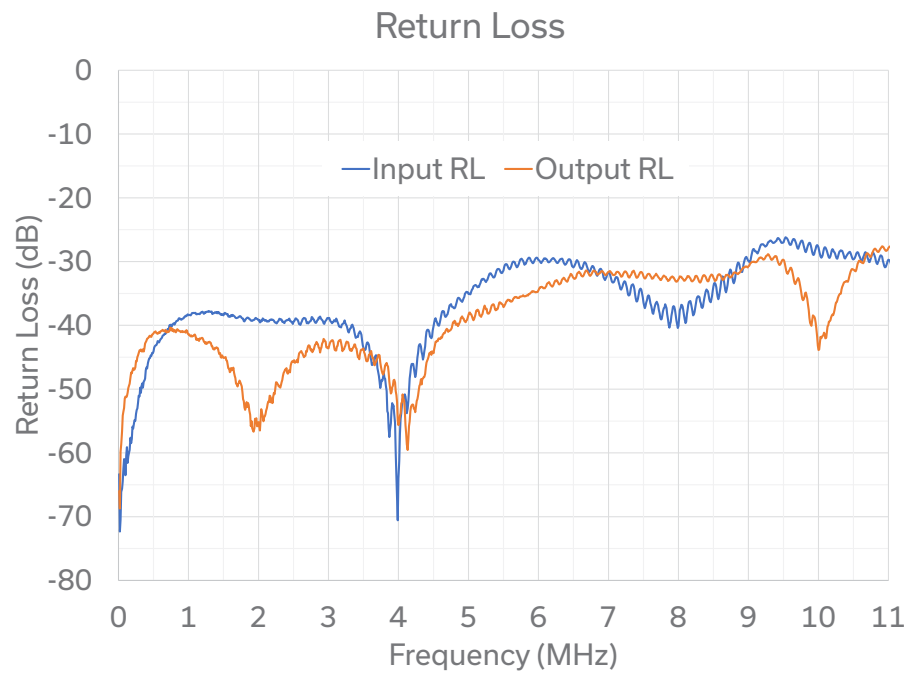
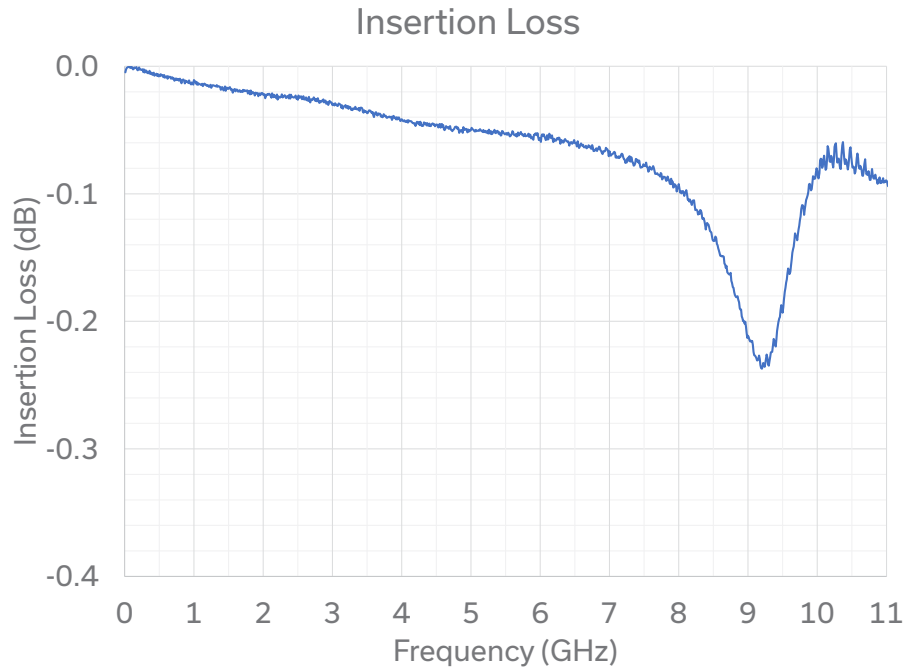
# Adapter Patch Panel

ZT-182

Mini-Circuits

50Ω DC to 11 GHz N-Type Female

## TYPICAL PERFORMANCE CURVES





RACK-MOUNTED

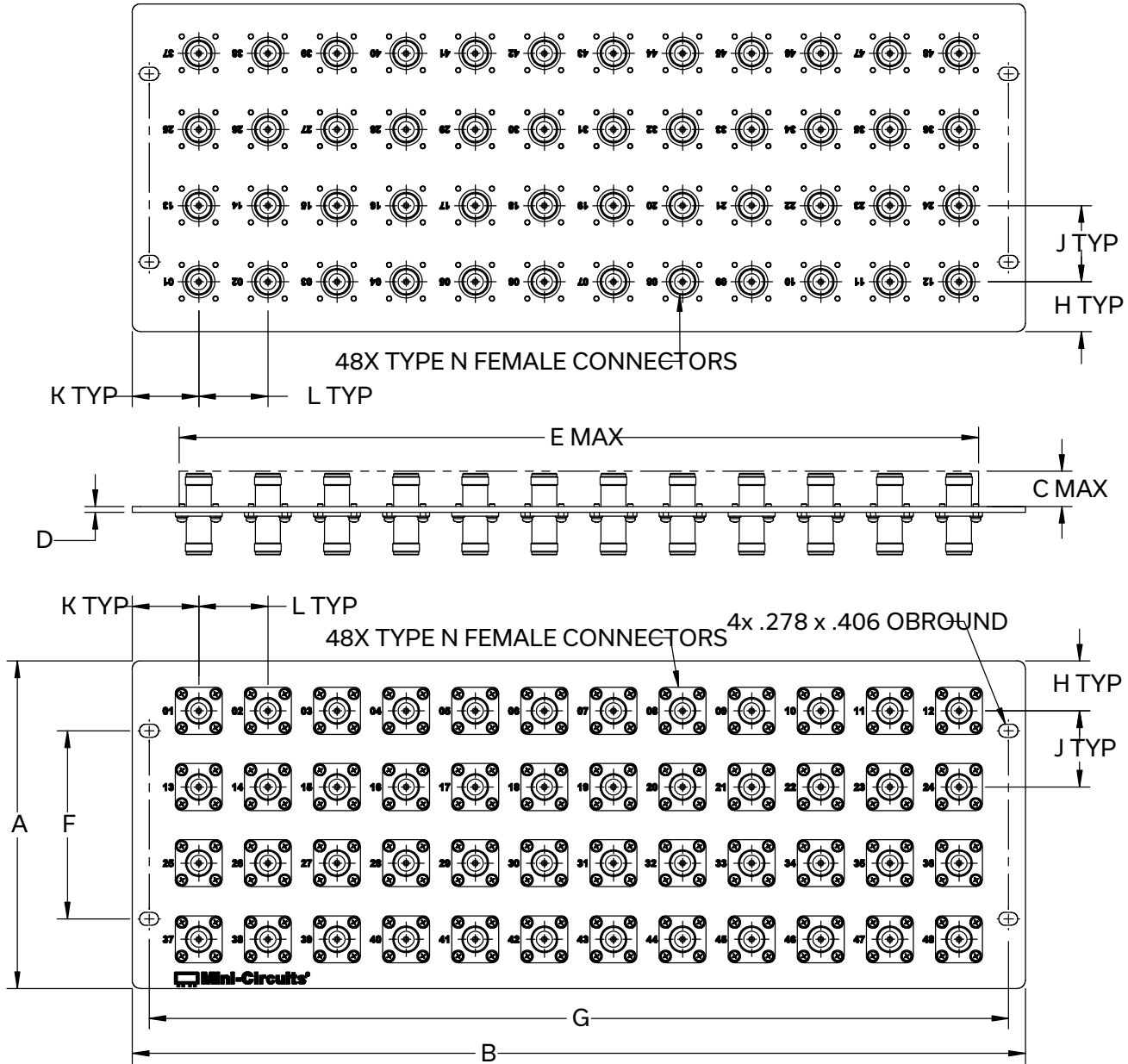
# Adapter Patch Panel

ZT-182

Mini-Circuits

50Ω DC to 11 GHz N-Type Female

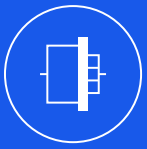
## OUTLINE DRAWING



## OUTLINE DIMENSIONS (Inch/mm)

A	B	C	D	E	F	G	H	J	K	L	weight
6.97	19.00	0.75	0.13	17	4.000	18.28	1.06	1.62	1.42	1.47	grams
177.0	482.6	19.1	3.3	431.8	101.60	464.31	26.9	41.1	36.1	37.3	3400





RACK-MOUNTED

# Adapter Patch Panel

ZT-182

Mini-Circuits

50Ω DC to 11 GHz N-Type Female

## ORDERING INFORMATION

To learn more, click here: [ZT-182](#)

Model	Description
ZT-182	48 x N-Type Female to Female Adapter Patch Panel

## NOTES

- A. Performance and quality attributes and conditions not expressly stated in this specification document are intended to be excluded and do not form a part of this specification document.
- B. Electrical specifications and performance data contained in this specification document are based on Mini-Circuit's applicable established test performance criteria and measurement instructions.
- C. The parts covered by this specification document are subject to Mini-Circuits standard limited warranty and terms and conditions (collectively, "Standard Terms"); Purchasers of this part are entitled to the rights and benefits contained therein. For a full statement of the standard terms and the exclusive rights and remedies thereunder, please visit Mini-Circuits' website at [www.minicircuits.com/terms/viewterm.html](http://www.minicircuits.com/terms/viewterm.html)

