



RACK MOUNTED | USB & ETHERNET CONTROL

RF SP6T Switch Matrix

ZTM-15

50Ω DC to 12 GHz 20W

THE BIG DEAL

- 6 x mechanical terminated SP6T switches
- Ethernet & USB controlled
- High reliability, 10 million switch cycles
- 20W power rating (cold switching)

APPLICATIONS

- 5G FR1, WiFi 6E, UWB, Bluetooth
- Automated test equipment
- Fail-safe / redundancy switching

PRODUCT OVERVIEW

Mini-Circuits' ZTM-15 comprises 6 independently controlled, electro-mechanical SP6T switches. Each switch operates over a wide bandwidth, from DC to 12 GHz, with high isolation and low insertion loss. The absorptive switches are of a failsafe / normally open and break-before-make-configuration with a lifetime of 10 million switching cycles when used within the noted specifications.

The switch system is housed in a rugged 19" rack chassis, 3U height, with all SMA (f) RF connectors and LED switch position indicators on the front panel. The modular design of the ZTM series switch rack supports easy maintenance and re-configuration in the field, without the need to return the whole system to a Mini-Circuits facility.

The switches are controlled via USB or Ethernet, allowing control directly from a PC, or remotely over a network. Full software support is provided, including our user-friendly GUI application for Windows and a full API with programming instructions for Windows and Linux environments (both 32-bit and 64-bit systems).

Custom switch configurations can be configured to fit any requirement, using Mini-Circuits' online configurator tool at www.minicircuits.com/WebStore/ztm.html.



CASE STYLE: YD2861

[DOWNLOAD](#) SOFTWARE PACKAGE

RoHS Compliant
See our website for RoHS Compliance methodologies and qualifications

KEY FEATURES

Feature	Advantages
High performance switches	Mechanical absorptive switches provide high reliability, repeatable high performance, and internal terminations of input signals on the disconnected paths.
Rack-mount chassis	Compact 3U height, 19" rack-mountable chassis with RF connections on the front, suits integration in automated production test environments.
Ethernet & USB control	USB HID and Ethernet (HTTP / Telnet) interfaces ensure compatibility with most software environments and connection requirements.

REV. A
ECO-013880
ZTM-15
MCL NY
220623





ELECTRICAL SPECIFICATIONS AT 25°C

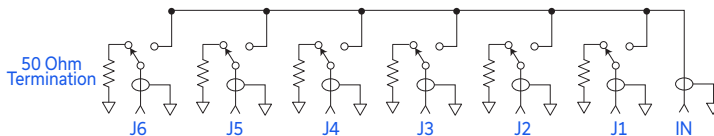
Parameter	Conditions (GHz)	Min.	Typ.	Max.	Unit
Frequency Range	-	DC	-	12	GHz
Insertion Loss	DC - 6	-	0.15	0.25	dB
	6 - 8	-	0.20	0.30	
	8 - 12	-	0.25	0.45	
Isolation	DC - 6	80	95	-	dB
	6 - 8	80	90	-	
	8 - 12	80	90	-	
VSWR	DC - 6	-	1.20	-	:1
	6 - 8	-	1.20	-	
	8 - 12	-	1.20	-	
Switching Time	-	-	25	-	ms
RF Input Power ¹	Cold switching	-	-	20	W
Switch Lifetime (per Switch)	100 mW hot switching 2	10	-	-	million cycles
	1W hot switching	-	1	-	

1 Maximum power for any connected through path as stated; maximum power into any internal termination is 1W per port

2 Hot switching power above this level will degrade the switch lifetime

SWITCHING CONFIGURATION:

- Normally open (all port disconnected)
- Absorptive (internal terminations on ports J1-J6)



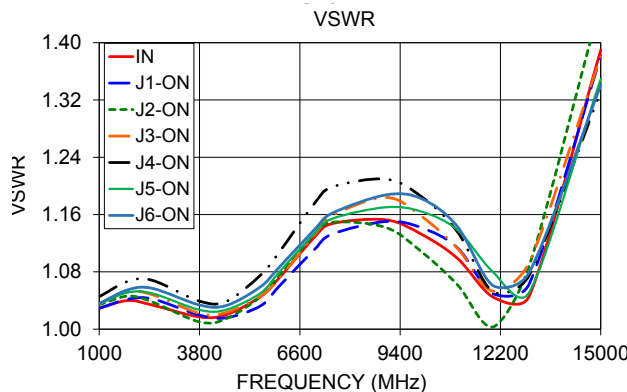
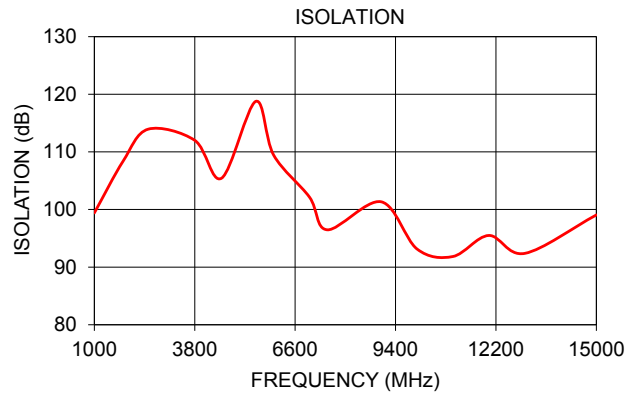
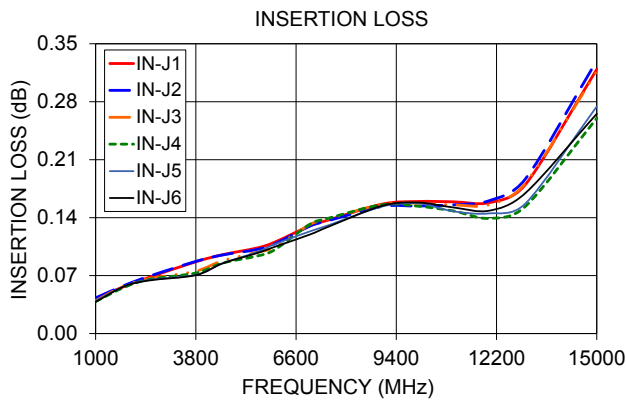
MECHANICAL & ENVIRONMENTAL SPECIFICATIONS

Dimensions	19" (W) x 3U (H) x 13" (D)			
Case Style	YD2681			
Case Material	Aluminum (with protective coating to prevent corrosion)			
RF Connectors	Panel	Connector	Quantity	Port Labels
	Front	SMA female	42	COM & 1-6 per switch
Panel Marking	Front Panel		Rear Panel	
	<ul style="list-style-type: none"> • ZTM-15 • Modular Test System 		<ul style="list-style-type: none"> • CE / EAC / UKCA • Serial number / date code / model name 	
Panel Items	<ul style="list-style-type: none"> • Power on / off switch with LED • LED switch position indicators • Carry handles 		<ul style="list-style-type: none"> • AC mains power input (IEC C14 inlet) • USB type B socket • RJ45 (LAN) socket 	
Power Supply	AC mains power input (90-260 V, 47-63 Hz)			
Fuse	2A, 250V rating			
Power Consumption	150 W max			
Temperature	Operating: 0 to +50 °C			



TYPICAL PERFORMANCE DATA

FREQ. (MHz)	ON INSERTION LOSS (dB)						ISOLA-TION (dB)	VSWR (:1)						
	IN-J1	IN-J2	IN-J3	IN-J4	IN-J5	IN-J6		IN	J1-ON	J2-ON	J3-ON	J4-ON	J5-ON	J6-ON
1000	0.04	0.04	0.04	0.04	0.04	0.04	99.41	1.03	1.03	1.03	1.04	1.05	1.04	1.04
1800	0.06	0.06	0.06	0.06	0.06	0.06	108.37	1.04	1.04	1.05	1.05	1.07	1.05	1.05
2500	0.07	0.07	0.07	0.07	0.06	0.06	113.94	1.03	1.04	1.04	1.05	1.07	1.05	1.06
3800	0.09	0.09	0.08	0.07	0.07	0.07	112.01	1.02	1.02	1.01	1.02	1.04	1.03	1.03
4550	0.10	0.09	0.09	0.09	0.08	0.08	105.44	1.02	1.02	1.01	1.02	1.04	1.03	1.03
5500	0.10	0.10	0.10	0.09	0.10	0.10	118.76	1.05	1.03	1.05	1.05	1.08	1.05	1.06
6000	0.11	0.11	0.10	0.10	0.11	0.10	109.45	1.07	1.06	1.07	1.07	1.11	1.08	1.09
7000	0.13	0.13	0.13	0.13	0.12	0.12	102.15	1.13	1.11	1.13	1.13	1.18	1.13	1.14
7500	0.14	0.14	0.14	0.14	0.13	0.13	96.47	1.15	1.13	1.15	1.16	1.20	1.15	1.16
9000	0.16	0.15	0.16	0.16	0.15	0.15	101.34	1.15	1.15	1.14	1.18	1.21	1.17	1.19
10000	0.16	0.15	0.16	0.15	0.16	0.16	93.14	1.13	1.14	1.11	1.16	1.18	1.16	1.18
11000	0.16	0.16	0.16	0.15	0.15	0.15	91.84	1.10	1.11	1.06	1.11	1.14	1.14	1.14
12000	0.16	0.16	0.16	0.14	0.15	0.15	95.49	1.04	1.05	1.00	1.05	1.05	1.08	1.06
13005	0.18	0.19	0.18	0.15	0.16	0.17	92.38	1.05	1.06	1.09	1.09	1.08	1.05	1.08
15000	0.32	0.33	0.32	0.26	0.27	0.27	99.05	1.39	1.38	1.46	1.38	1.33	1.35	1.34

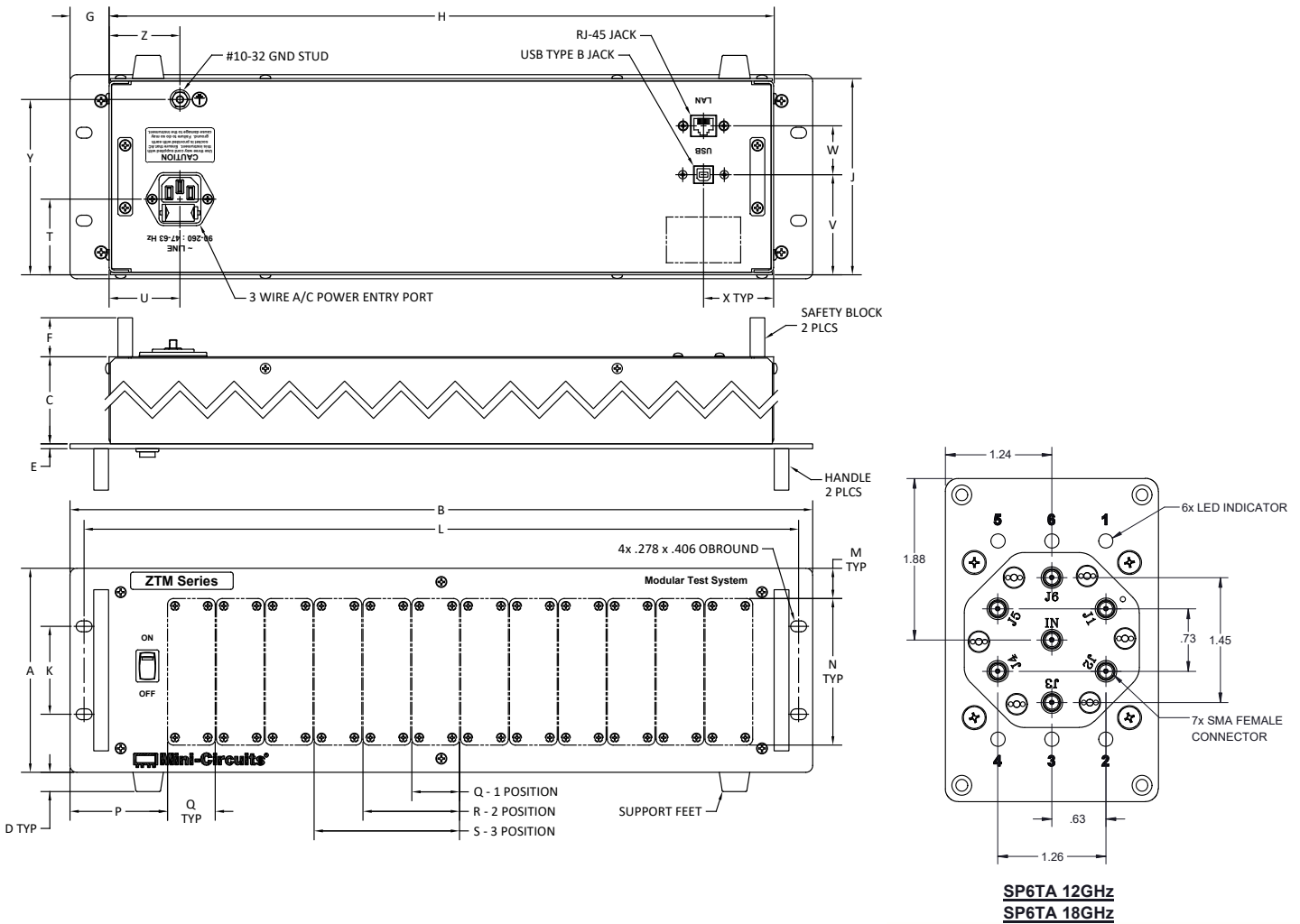




RF SP6T Switch Matrix

ZTM-15

OUTLINE DRAWING



OUTLINE DIMENSIONS (Inch/mm)

A	B	C	D	E	F	G	H	J	K	L	M	N
5.22	19.00	13.00	0.49	0.13	1.00	1.000	0.95	17.00	5.02	2.25	18.28	3.75
132.6	482.6	330.2	12.45	3.30	25.4	25.4	24.13	431.8	127.5	57.2	464.3	95.3
P	Q	R	S	T	U	V	W	X	Y	Z	wt	
2.50	1.22	2.47	3.72	1.94	1.81	2.56	1.25	1.79	4.49	1.81	grams	
63.5	31.0	62.7	94.49	49.28	46.0	65.0	31.75	45.5	114.0	46.0	4535	

**SOFTWARE & CONTROL SPECIFICATIONS**

- Mini-Circuits' full software and support package including user guide, Windows GUI, DLL files, programming manual and examples can be downloaded free of charge from:
- www.minicircuits.com/softwaredownload/ztm_rcm.html
- Please contact testsolutions@minicircuits.com for support

Ethernet Control	Supported Protocols	TCP / IP, HTTP, Telnet, DHCP, UDP
	Max Data Rate	10 Mbps (10Base-T Half Duplex)
USB Control	Supported Protocols	HID - Full Speed
	Min Communication Time	3 ms typ
Software Support	<ul style="list-style-type: none"> • Mini-Circuits' Universal GUI for USB & LAN control (Windows only) • ASCII / SCPI command syntax for LAN programming (all OS) • ActiveX / .Net DLL APIs for USB programming (Windows only) • Interrupt codes for direct USB programming (all OS) • Full programming instructions and examples for a wide range of languages 	

PROGRAMMING COMMANDS

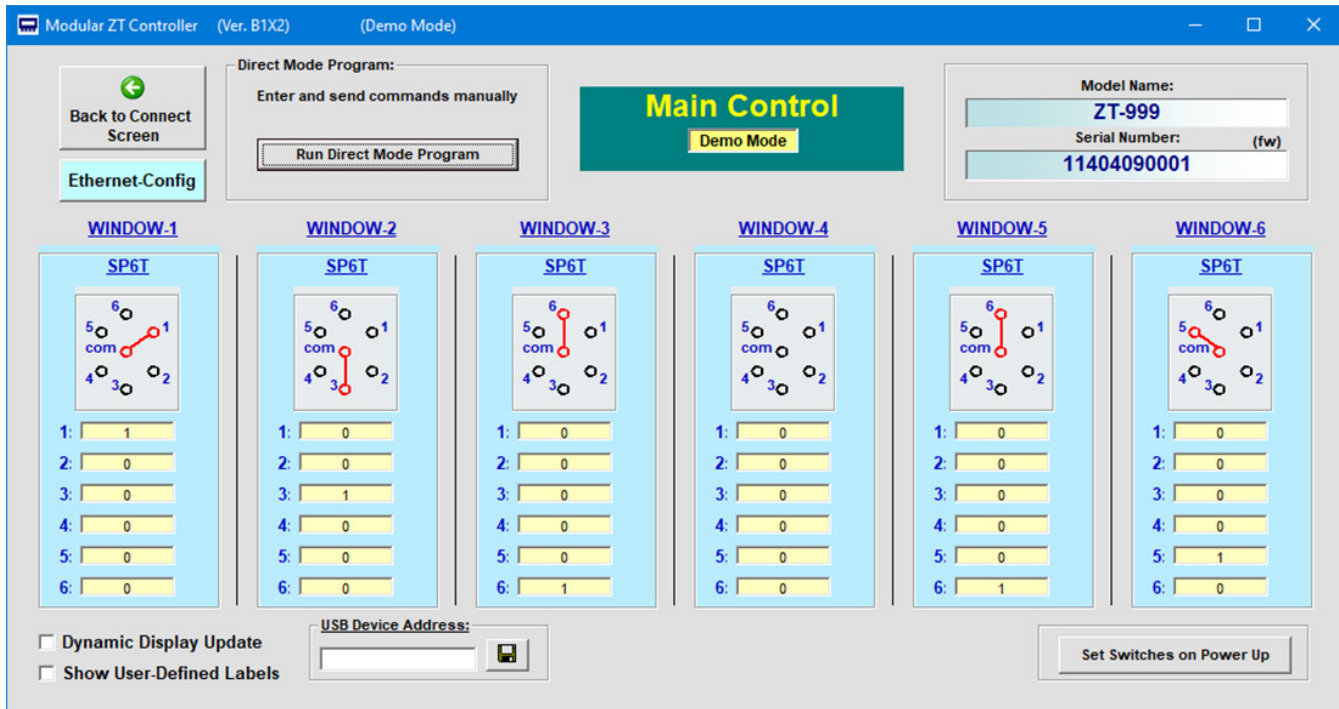
- The key ASCII / SCPI commands for control of the system are summarized below
- These can be sent via the USB or Ethernet API
- Please refer to the programming manual for full details

Command / Query	Description
:MN?	Read model name
:SN?	Read serial number
:FIRMWARE?	Read firmware version
:SP6T:sw_number:STATE:port	Set a single switch state: <ul style="list-style-type: none"> • sw_number = 1 to 6 • port = the switch state to set • :SP6T:1:STATE:2 (set switch 1 to state 2)
:Csw_number=port	Short-hand to set a single switch state: <ul style="list-style-type: none"> • sw_number = 1 to 6 • port = the switch state to set • C1=2 (set switch 1 to state 2)
:SP6T:sw_number:STATE?	Get the state of a single switch: <ul style="list-style-type: none"> • sw_number = 1 to n • :SP6T:1:STATE? (get the state of switch 1)



GRAPHICAL USER INTERFACE (GUI) FOR WINDOWS

- Connect via USB or Ethernet
- Run GUI in "demo mode" to evaluate software without a hardware connection
- View and set all switch states
- Configure Ethernet settings
- Upgrade firmware
- Send SCPI commands





ORDERING INFORMATION

Please contact Mini-Circuits' Test Solutions department for price and availability:
www.minicircuits.com/WebStore/dashboard.html?model=ZTM-15

Model	Description
ZTM-15	RF SP6T Switch Matrix

Included Accessories	Part No.	Description
CBL-3W-xx*	1	AC power cord (IEC C13 connector to local plug)
USB-CBL-AB-7+	1	USB cable (6.8 ft)
CBL-RJ45-MM-5+	1	Ethernet cable (5 ft)
HT-4-SMA	1	SMA Cable Wrench (4 in)

Cable Model	Region
CBL-3W-US	USA
CBL-3W-EU	Europe
CBL-3W-IL	Israel
CBL-3W-UK	UK
CBL-3W-AU	Australia / China

- NOTES**
- A. Performance and quality attributes and conditions not expressly stated in this specification document are intended to be excluded and do not form a part of this specification document.
 - B. Electrical specifications and performance data contained in this specification document are based on Mini-Circuit's applicable established test performance criteria and measurement instructions.
 - C. The parts covered by this specification document are subject to Mini-Circuits standard limited warranty and terms and conditions (collectively, "Standard Terms"); Purchasers of this part are entitled to the rights and benefits contained therein. For a full statement of the standard terms and the exclusive rights and remedies thereunder, please visit Mini-Circuits' website at www.minicircuits.com/terms/viewterm.html