

REPLACEMENT PART REFERENCE GUIDE, SWM-2-50DR+ AN-80-014

ORIGINAL PART: SWM-2-50DR+
 REPLACEMENT PART: M3SWA-2-50DRA+

Replacement Part has been judged by Mini-Circuits Engineering as a close replacement to Original Part^a

MECHANICAL DIMENSIONS & PCB LAND PATTERN

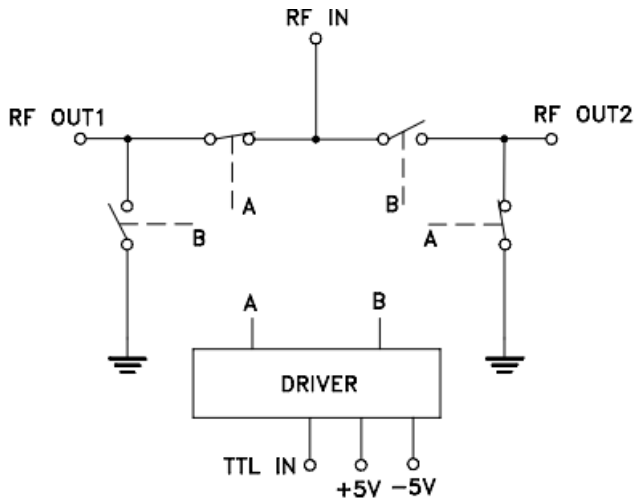
ORIGINAL PART: SWM-2-50DR+	REPLACEMENT PART: M3SWA-2-50DRA+																																																																																																																								
<p>Case Style DL1020</p> <p>Outline Dimensions (inch/mm)</p> <table border="1"> <thead> <tr> <th>A</th><th>B</th><th>C</th><th>D</th><th>E</th><th>F</th><th>G</th><th>H</th><th>J</th><th>K</th></tr> </thead> <tbody> <tr> <td>--</td><td>.193</td><td>.035</td><td>.238</td><td>--</td><td>.050</td><td>.017</td><td>.008</td><td>--</td><td>.024</td></tr> <tr> <td>--</td><td>4.90</td><td>0.90</td><td>6.00</td><td>--</td><td>1.27</td><td>0.43</td><td>0.20</td><td>--</td><td>0.60</td></tr> <tr> <th>L</th><th>M</th><th>N</th><th>P</th><th>Q</th><th>R</th><th>S</th><th>T</th><th colspan="2">wt</th></tr> <tr> <td>--</td><td>.050</td><td>.030</td><td>.270</td><td>.030</td><td>.110</td><td>.020</td><td>--</td><td colspan="2">grams</td></tr> <tr> <td>--</td><td>1.27</td><td>0.76</td><td>6.88</td><td>0.76</td><td>2.79</td><td>0.51</td><td>--</td><td colspan="2">0.08</td></tr> </tbody> </table>	A	B	C	D	E	F	G	H	J	K	--	.193	.035	.238	--	.050	.017	.008	--	.024	--	4.90	0.90	6.00	--	1.27	0.43	0.20	--	0.60	L	M	N	P	Q	R	S	T	wt		--	.050	.030	.270	.030	.110	.020	--	grams		--	1.27	0.76	6.88	0.76	2.79	0.51	--	0.08		<p>Case Style DL805</p> <p>Outline Dimensions (inch/mm)</p> <table border="1"> <thead> <tr> <th>A</th><th>B</th><th>C</th><th>D</th><th>E</th><th>F</th><th>G</th><th>H</th><th>J</th><th>K</th></tr> </thead> <tbody> <tr> <td>0.128</td><td>0.128</td><td>0.035</td><td>0.008</td><td>0.080</td><td>0.047</td><td>0.013</td><td>--</td><td>0.014</td><td>0.028</td></tr> <tr> <td>3.25</td><td>3.25</td><td>0.89</td><td>0.20</td><td>2.03</td><td>1.19</td><td>0.33</td><td>--</td><td>0.36</td><td>0.66</td></tr> <tr> <th>L</th><th>M</th><th>N</th><th>P</th><th>Q</th><th>R</th><th>S</th><th>T</th><th colspan="2">wt</th></tr> <tr> <td>0.158</td><td>0.158</td><td>0.084</td><td>0.013</td><td>0.030</td><td>0.048</td><td>0.020</td><td>0.025</td><td colspan="2">grams</td></tr> <tr> <td>4.01</td><td>4.01</td><td>2.13</td><td>0.33</td><td>0.76</td><td>1.22</td><td>0.51</td><td>0.64</td><td colspan="2">0.02</td></tr> </tbody> </table>	A	B	C	D	E	F	G	H	J	K	0.128	0.128	0.035	0.008	0.080	0.047	0.013	--	0.014	0.028	3.25	3.25	0.89	0.20	2.03	1.19	0.33	--	0.36	0.66	L	M	N	P	Q	R	S	T	wt		0.158	0.158	0.084	0.013	0.030	0.048	0.020	0.025	grams		4.01	4.01	2.13	0.33	0.76	1.22	0.51	0.64	0.02	
A	B	C	D	E	F	G	H	J	K																																																																																																																
--	.193	.035	.238	--	.050	.017	.008	--	.024																																																																																																																
--	4.90	0.90	6.00	--	1.27	0.43	0.20	--	0.60																																																																																																																
L	M	N	P	Q	R	S	T	wt																																																																																																																	
--	.050	.030	.270	.030	.110	.020	--	grams																																																																																																																	
--	1.27	0.76	6.88	0.76	2.79	0.51	--	0.08																																																																																																																	
A	B	C	D	E	F	G	H	J	K																																																																																																																
0.128	0.128	0.035	0.008	0.080	0.047	0.013	--	0.014	0.028																																																																																																																
3.25	3.25	0.89	0.20	2.03	1.19	0.33	--	0.36	0.66																																																																																																																
L	M	N	P	Q	R	S	T	wt																																																																																																																	
0.158	0.158	0.084	0.013	0.030	0.048	0.020	0.025	grams																																																																																																																	
4.01	4.01	2.13	0.33	0.76	1.22	0.51	0.64	0.02																																																																																																																	
<p>Marking 2-50DR</p>	<p>Marking 3SWA</p>																																																																																																																								

Notes:
 a. Suitability for model replacement within a particular system must be determined by and is solely the responsibility of the customer based on, among other things, electrical performance criteria, stimulus conditions, application, compatibility with other components and environmental conditions and stresses.

ORIGINAL PART: SWM-2-50DR+

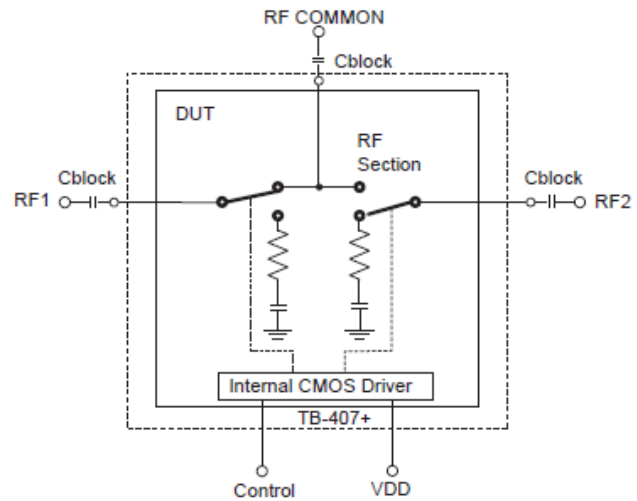
REPLACEMENT PART: M3SWA-2-50DRA+

Application Circuit



All RF connections must be DC blocked or held at 0V DC.

Application Circuit



Needs external blocking Capacitors on all RF ports

(Suggested value: 47 pF)

Pin Connections

Function	Pin
RF IN	6
RF OUT 1	1
RF OUT 2	4
TTL IN	2
+5V	5
-5V	7
TTL GND	3
GND	8
GND EXT	PADDLE

Pin Connections

Function	Pin
RF IN	6
RF OUT 1	1
RF OUT 2	4
CMOS CONTROL IN (Note 1)	2
+5V	5
No Connection (Note 2)	7
CMOS GND (Note 1)	3
GND	8
GND	PADDLE

Notes: Pin Connections are same as in original part, except Pin 7 has no internal connection

- 1) Driver is CMOS compatible instead of TTL
- 2) In replacement situations, -5V can be applied to Pin 7 with no impact on performance

Notes:
a. Suitability for model replacement within a particular system must be determined by and is solely the responsibility of the customer based on, among other things, electrical performance criteria, stimulus conditions, application, compatibility with other components and environmental conditions and stresses.

CONCLUSIONS:

1) FORM-FIT-FUNCTION COMPATIBLE_a:

Replacement part is not Form-Fit compatible. Customer PCB layout need to change plus external blocking Capacitors on RF ports are needed.

Following is a summary of Electrical changes/improvements:

Typical performance: See Paragraphs 2

Min/Max Specifications seen below,

Parameter	Original Part (SWM-2-50DR+)	Replacement Part (M3SWA-2-50DRA+)
Positive Power Supply (V _{DD})	4.8 to 5.2V	+3V to +5.0V
Negative Power Supply(V _{SS})	-5.2 to -4.8V	Not Required
Control Input Low Voltage	0V min, 0.8V max	0V Min, 0.5 Max
Control Input High Voltage	2V min, 5V max.	0.7V _{DD} to V _{DD}
+5V Positive Supply Current (I _{DD}) -5V Negative Supply Current (I _{SS})	9mA Max. 9mA Max	50 µA typ. , 200 µA max ---
Control Current	High V, 5mA Max, Low V, 0.2mA Max	0.2uA typ., 10 uA max
Rise/Fall Time (10 to 90%)	5ns typ. 15ns Max	16 ns Typ.
Switching Time (turn on/off) 50% Control to 90% RF/10% RF	10ns typ. 20ns Max	29 ns Typ.
P1dB (dBm) at V _{DD} =5V typ. Over	DC -100MHz 20 Typ. 100-1000MHz 25 Typ. 1000-2000MHz 25 Typ. 2000-4500MHz 24 Typ.	100- 1000MHz 23 Typ. 1000-2000MHz 30 Typ. 2000- 4500MHz 26 Typ.
ESD HBM	Class 1C (1000 to <2000V)	Class 1A (250 to < 500V)
Absorptive	No	Yes, from 500-4500 MHz (See Paragraph 3)
DC Blocking Caps on RF ports	All RF connections must be DC blocked or held at 0V DC.	Needs external blocking Capacitors on all RF ports (Suggested value: 47 pF)

Notes:
a. Suitability for model replacement within a particular system must be determined by and is solely the responsibility of the customer based on, among other things, electrical performance criteria, stimulus conditions, application, compatibility with other components and environmental conditions and stresses.

**2) PERFORMANCE COMPARISON CURVES: Original Part (Vdd = 4.6 & -4.6V, Vctrl = 0 & 4.6V)
Replacement Part (Vdd = 5V, Vctrl = 0 & 3.7V)**

Replacement Guide	Freq (MHz)		M3SWA-2-50DRA+ 5 Units @Vdd = 5V @Vctrl = 0V & 3.7V			SWM-2-50DR+ Data of 2 Units Vd=+/-4.6V Vctrl = 0,4.6V		
	From	To	Min.	Avg.	Max.	Min.	Avg.	Max.
INSERTION LOSS S-1 (dB)	10	10	0.6	0.6	0.6	0.6	0.6	0.6
	100	100	0.7	0.7	0.7	0.6	0.6	0.6
	1000	1000	0.8	0.8	0.8	0.6	0.7	0.7
	2000	2000	1.0	1.0	1.1	0.7	0.7	0.7
	4500	4500	1.4	1.5	1.6	1.1	1.1	1.1
INSERTION LOSS S-2 (dB)	10	10	0.6	0.6	0.6	0.6	0.6	0.6
	100	100	0.6	0.6	0.7	0.6	0.6	0.6
	1000	1000	0.8	0.8	0.8	0.6	0.6	0.7
	2000	2000	1.0	1.0	1.0	0.7	0.7	0.7
	4500	4500	1.3	1.4	1.4	1.1	1.1	1.1
ISOLATION S-1 (dB)	10	10	75.4	76.4	77.1	82.8	87.0	91.2
	100	100	65.9	66.0	66.2	89.2	89.4	89.6
	1000	1000	55.5	59.1	72.8	61.7	61.9	62.1
	2000	2000	42.1	43.5	48.2	51.2	51.3	51.4
	4500	4500	27.2	30.4	37.9	38.6	38.6	38.6
ISOLATION S-2 (dB)	10	10	69.9	70.3	70.9	69.3	70.0	70.7
	100	100	59.3	59.3	59.4	82.0	83.4	84.7
	1000	1000	61.0	62.6	65.9	59.2	59.5	59.9
	2000	2000	44.6	46.4	51.8	49.0	49.4	49.8
	4500	4500	27.7	30.9	38.3	38.7	38.8	38.8
RETURN LOSS S-Port (1 ON) (dB)	10	10	24.5	24.5	24.6	25.2	25.4	25.6
	100	100	24.6	24.7	24.7	25.6	25.7	25.9
	1000	1000	26.6	26.9	27.5	19.2	19.6	20.0
	2000	2000	21.5	22.1	23.4	18.8	19.9	20.9
	4500	4500	15.6	16.9	17.9	17.6	18.5	19.3
RETURN LOSS S-Port (2 ON) (dB)	10	10	23.5	24.0	24.3	25.5	25.7	26.0
	100	100	23.3	23.9	24.1	25.5	25.6	25.6
	1000	1000	23.7	24.3	24.7	19.4	19.8	20.2
	2000	2000	23.0	23.5	24.0	20.0	20.2	20.4
	4500	4500	16.2	17.4	18.3	16.9	17.2	17.6
RETURN LOSS Port 1 (ON) (dB)	10	10	24.4	24.4	24.4	25.9	26.0	26.1
	100	100	24.5	24.6	24.6	25.6	25.7	25.8
	1000	1000	21.8	21.9	21.9	19.4	19.4	19.5
	2000	2000	17.9	18.1	18.4	16.8	17.4	18.0
	4500	4500	20.5	22.1	24.4	20.0	20.8	21.5
RETURN LOSS Port 2 (ON) (dB)	10	10	23.2	23.8	24.0	25.9	26.0	26.1
	100	100	23.1	23.6	23.8	25.6	25.7	25.9
	1000	1000	22.6	23.1	23.3	19.0	19.9	20.7
	2000	2000	17.6	17.9	18.1	17.2	17.4	17.7
	4500	4500	23.4	25.4	28.1	19.3	19.6	19.9
RETURN LOSS Port 1 (OFF) (dB)	10	10	0.1	0.1	0.1	3.4	3.5	3.5
	100	100	2.2	2.2	2.2	3.5	3.5	3.5
	1000	1000	20.8	21.2	21.5	3.2	3.2	3.3
	2000	2000	20.4	21.0	21.7	3.3	3.3	3.3
	4500	4500	13.3	13.7	14.2	2.5	2.6	2.7
RETURN LOSS Port 2 (OFF) (dB)	10	10	0.1	0.1	0.1	3.5	3.5	3.5
	100	100	2.1	2.1	2.1	3.5	3.5	3.5
	1000	1000	20.3	20.5	20.9	3.2	3.2	3.2
	2000	2000	22.7	23.3	23.7	3.2	3.3	3.5
	4500	4500	14.3	14.9	15.4	2.5	2.6	2.6

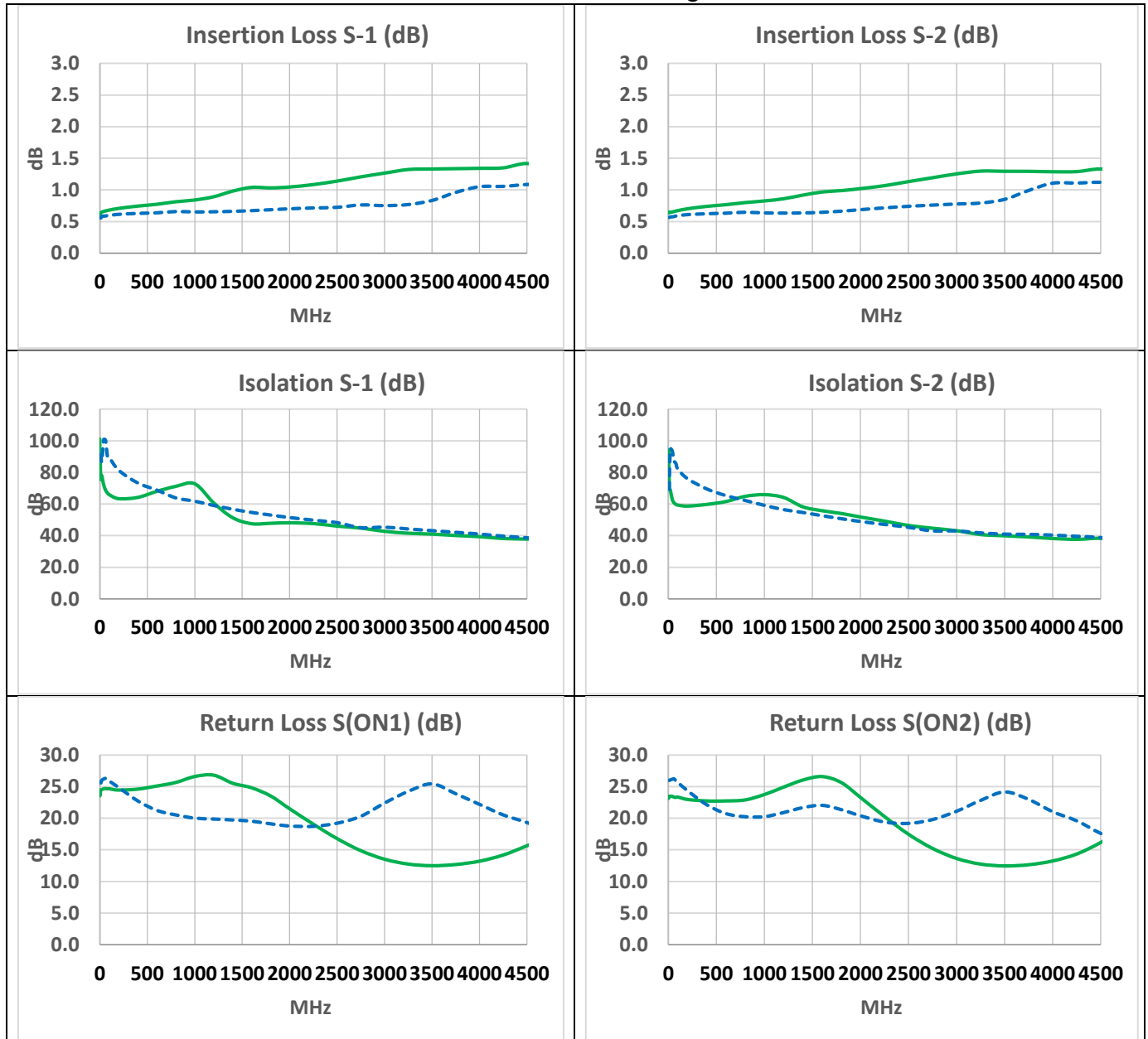
Notes:
a. Suitability for model replacement within a particular system must be determined by and is solely the responsibility of the customer based on, among other things, electrical performance criteria, stimulus conditions, application, compatibility with other components and environmental conditions and stresses.

3) **PERFORMANCE COMPARISON CURVES: Original Part (Vdd = 4.6 & -4.6V, Vctrl = 0 & 4.6V)**
Replacement Part (Vdd = 5V, Vctrl = 0 & 3.7V)

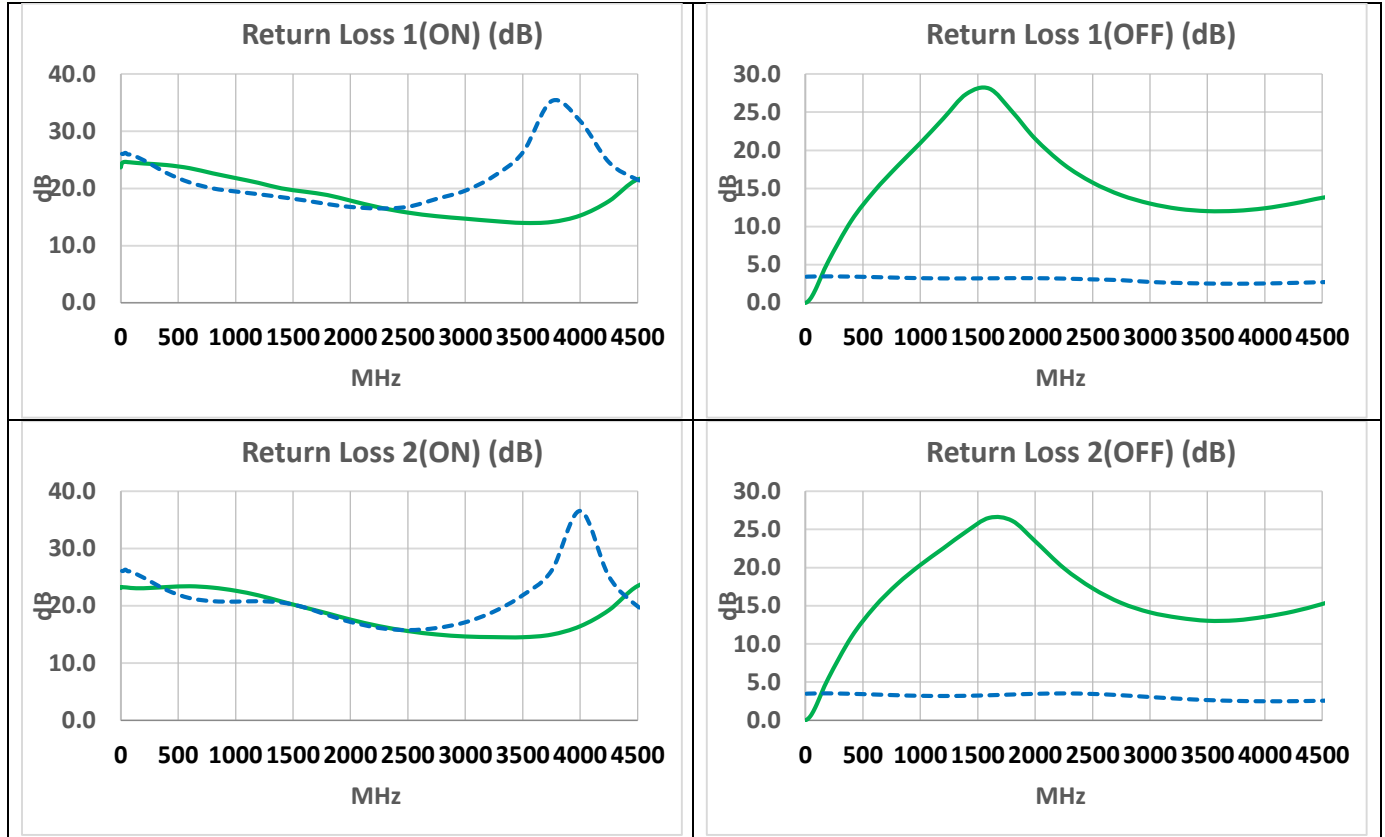


Data of Replacement Part

Data of Original Part



Notes:
a. Suitability for model replacement within a particular system must be determined by and is solely the responsibility of the customer based on, among other things, electrical performance criteria, stimulus conditions, application, compatibility with other components and environmental conditions and stresses.



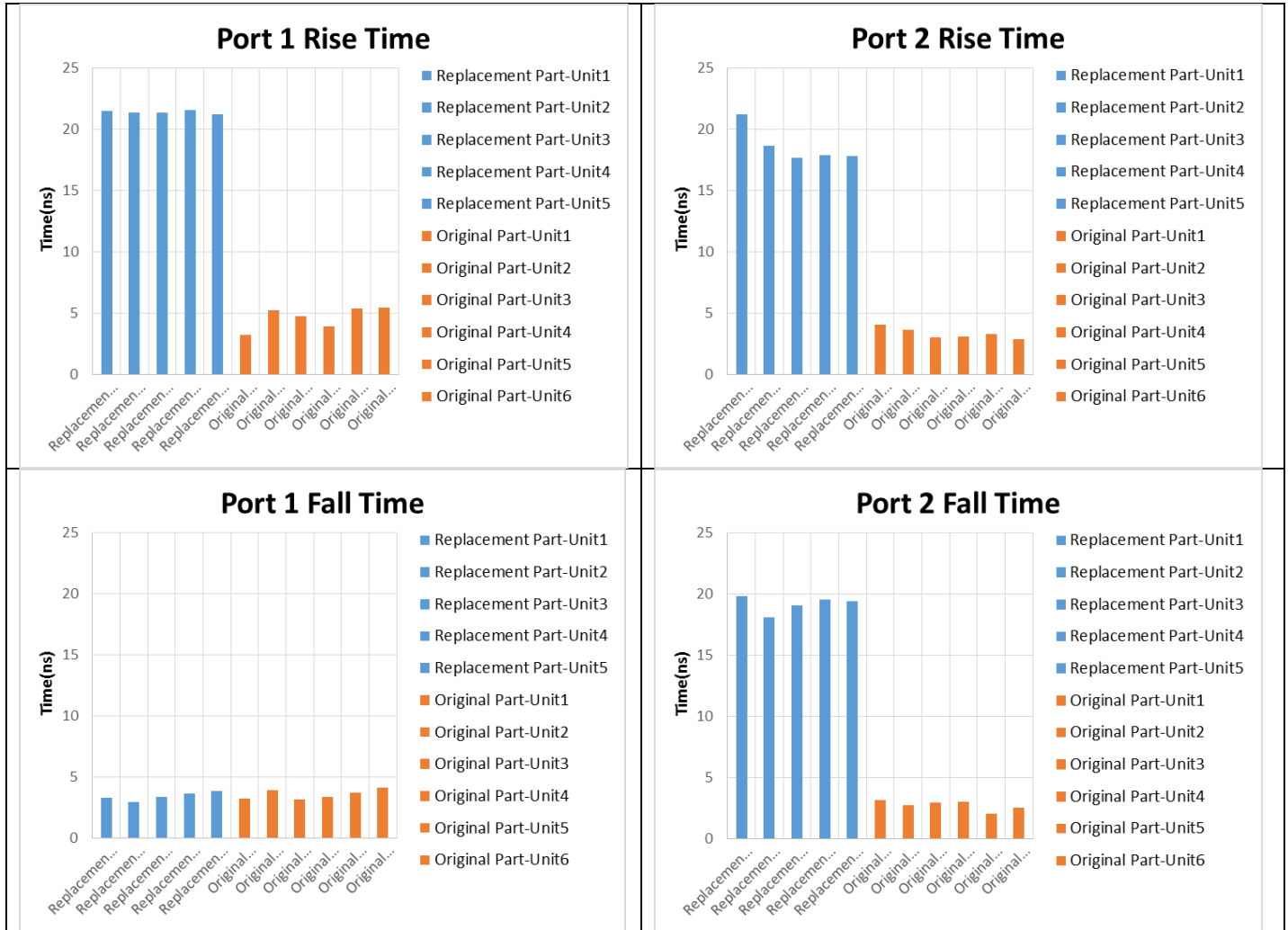
Notes:
a. Suitability for model replacement within a particular system must be determined by and is solely the responsibility of the customer based on, among other things, electrical performance criteria, stimulus conditions, application, compatibility with other components and environmental conditions and stresses.

**1) SWITCHING/RISE/FALL TIME COMPARISON (Original Part (Vdd = 5 & -5V, Vctrl = 0 & 3.7V)
Replacement Part (Vdd =5V, Vctrl = 0 & 3.7V)**

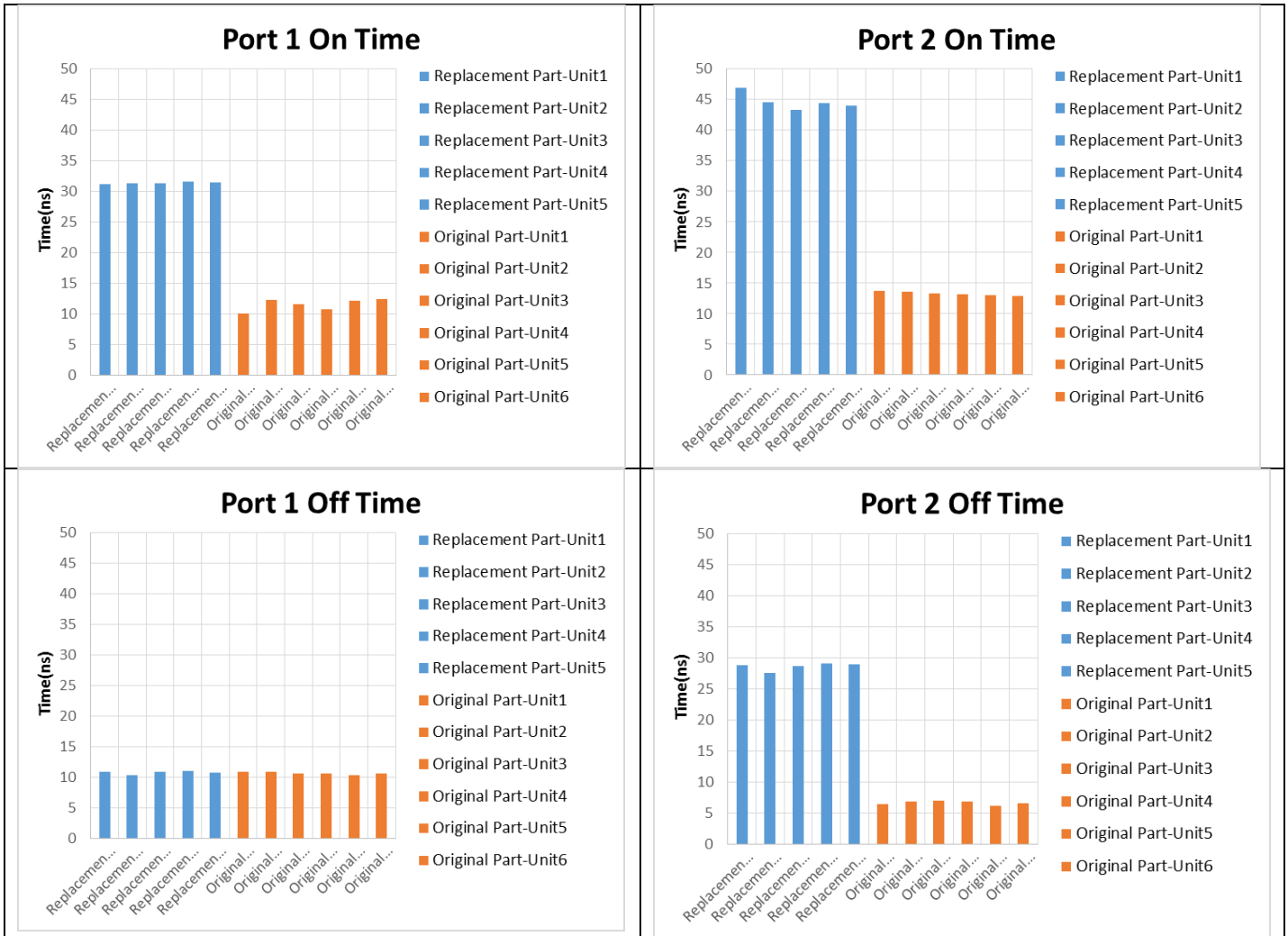
Rise Time: 10 to 90% RF, Fall Time: 90% to 10% RF

Switching Time:

On Time 50% Control to 90%/10% RF, Fall Time 50% Control to 10% RF



Notes:
a. Suitability for model replacement within a particular system must be determined by and is solely the responsibility of the customer based on, among other things, electrical performance criteria, stimulus conditions, application, compatibility with other components and environmental conditions and stresses.



IMPORTANT NOTICE

© 2015 Mini-Circuits

This document is provided as an accommodation to Mini-Circuits customers in connection with Mini-Circuits parts only. In that regard, this document is for informational and guideline purposes only. Mini-Circuits assumes no responsibility for errors or omissions in this document or for any information contained herein.

Mini-Circuits may change this document or the Mini-Circuits parts referenced herein (collectively, the "Materials") from time to time, without notice. Mini-Circuits makes no commitment to update or correct any of the Materials, and Mini-Circuits shall have no responsibility whatsoever on account of any updates or corrections to the Materials or Mini-Circuits' failure to do so.

Mini-Circuits customers are solely responsible for the products, systems, and applications in which Mini-Circuits parts are incorporated or used. In that regard, customers are responsible for consulting with their own engineers and other appropriate professionals who are familiar with the specific products and systems into which Mini-Circuits' parts are to be incorporated or used so that the proper selection, installation/integration, use and safeguards are made. Accordingly, Mini-Circuits assumes no liability therefore.

In addition, your use of this document and the information contained herein is subject to Mini-Circuits' standard terms of use, which are available at Mini-Circuits' website at www.minicircuits.com/homepage/terms_of_use.html.

Mini-Circuits and the Mini-Circuits logo are registered trademarks of Scientific Components Corporation d/b/a Mini-Circuits. All other third-party trademarks are the property of their respective owners. A reference to any third-party trademark does not constitute or imply any endorsement, affiliation, sponsorship, or recommendation: (i) by Mini-Circuits of such third-party's products, services, processes, or other information; or (ii) by any such third-party of Mini-Circuits or its products, services, processes, or other information.

Notes:
 a. Suitability for model replacement within a particular system must be determined by and is solely the responsibility of the customer based on, among other things, electrical performance criteria, stimulus conditions, application, compatibility with other components and environmental conditions and stresses.