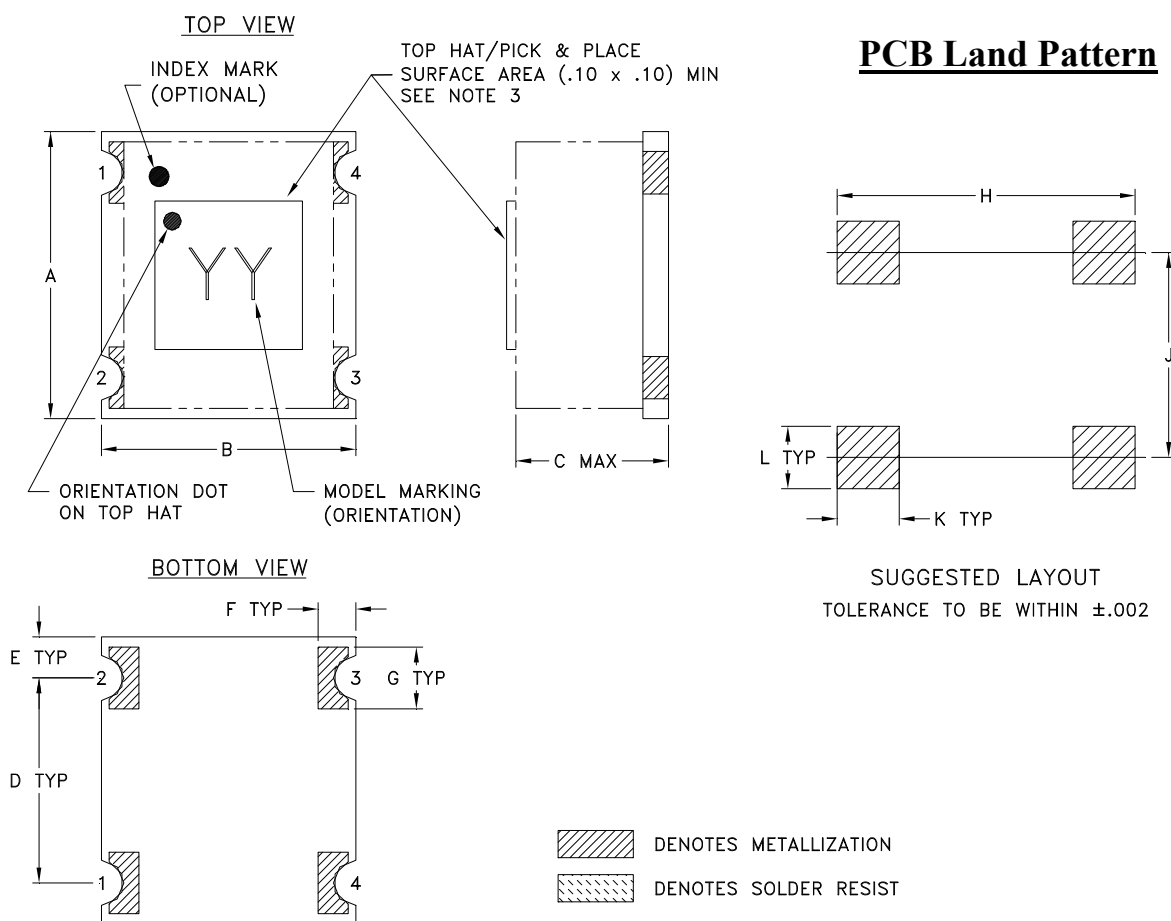


Outline Dimensions

TT1618-1



CASE #	A	B	C	D	E	F	G	H	J	K	L	WT GRAMS
TT1618-1	.280 (7.11)	.250 (6.35)	.16 (4.06)	.200 (5.08)	.040 (1.02)	.037 (.94)	.060 (1.52)	.293 (7.44)	.200 (5.08)	.061 (1.55)	.061 (1.55)	3.00

Dimensions are in inches (mm). Tolerances: 2Pl. $\pm .01$; 3 Pl. $\pm .005$

Notes:

- Open style, Base material: Printed wiring laminate.
- Termination finish: 3-5 μ inch (.08-.13 microns) Gold over 120-240 μ inch (3.05-6.10 microns) Nickel plate.
All models, (+) suffix.
- Top-Hat total thickness: .013 inches MAX.
- Orientation Dot on Top Hat & PCB corresponds to Pin #1.

Mini-Circuits®
ISO 9001 ISO 14001 CERTIFIED

ALL NEW
minicircuits.com

P.O. Box 350166, Brooklyn, New York 11235-0003 (718) 934-4500 Fax (718) 332-4661 For detailed performance specs & shopping online see Mini-Circuits web site



The Design Engineers Search Engine Provides ACTUAL Data Instantly From MINI-CIRCUITS At: www.minicircuits.com

RF/IF MICROWAVE COMPONENTS