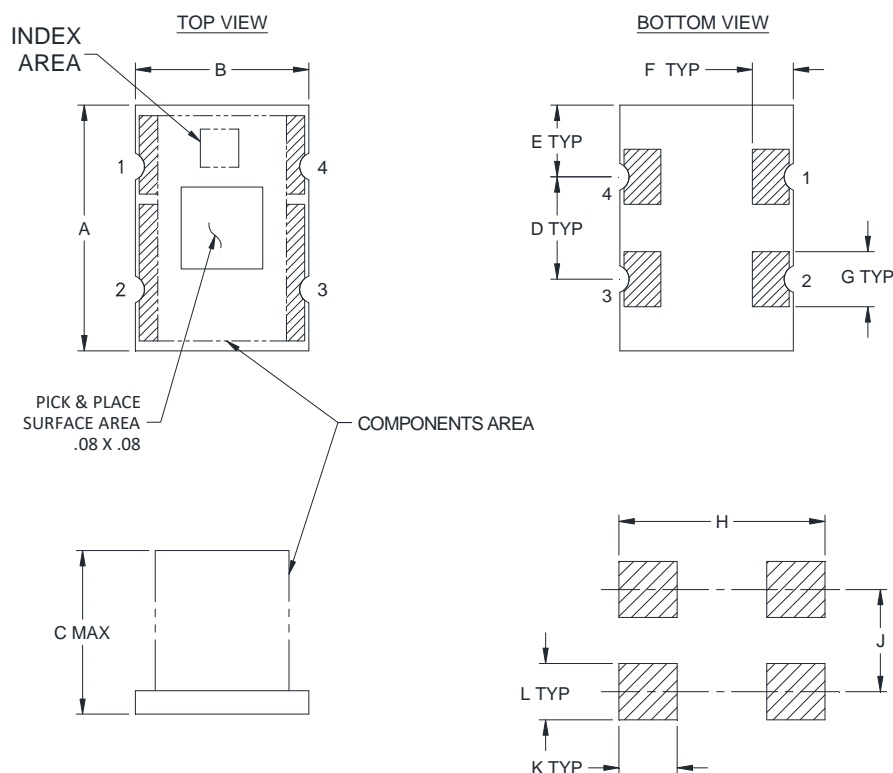


## Outline Dimensions

TT1618-2



SUGGESTED FOOTPRINT FOR PC LAYOUT  
TOLERANCE TO BE WITHIN  $\pm .002$

CASE #	A	B	C	D	E	F	G	H	J	K	L	WT GRAMS
TT1618-2	.240 (6.10)	.170 (4.32)	.160 (4.06)	.100 (2.54)	.070 (1.78)	.040 (1.02)	.054 (1.37)	.202 (5.13)	.100 (2.54)	.057 (1.45)	.055 (1.40)	2.80

Dimensions are in inches (mm). Tolerances: 2 Pl.  $\pm .01$ ; 3 Pl.  $\pm .005$

### Notes:

1. Open style, Base material: Printed wiring laminate.
2. Termination finish: 3-5  $\mu$  inch (.08-.13 microns) Gold over 120-240  $\mu$  inch (3.05-6.10 microns) Nickel plate.  
All models, (+) suffix.
3. Orientation Dot on Unit corresponds to Pin #1.



P.O. Box 350166, Brooklyn, New York 11235-0003 (718) 934-4500 Fax (718) 332-4661 For detailed performance specs & shopping online see Mini-Circuits web site



The Design Engineers Search Engine Provides ACTUAL Data Instantly From MINI-CIRCUITS At: [www.minicircuits.com](http://www.minicircuits.com)

RF/IF MICROWAVE COMPONENTS