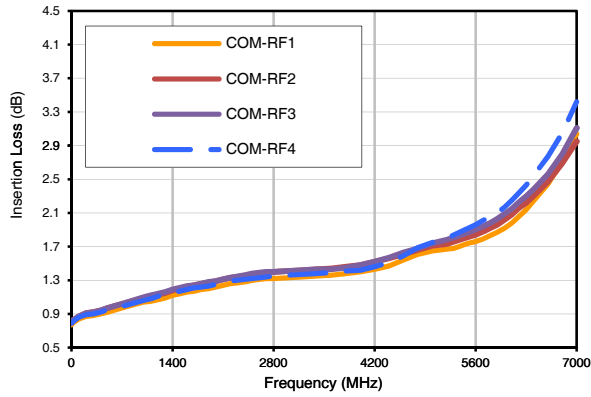
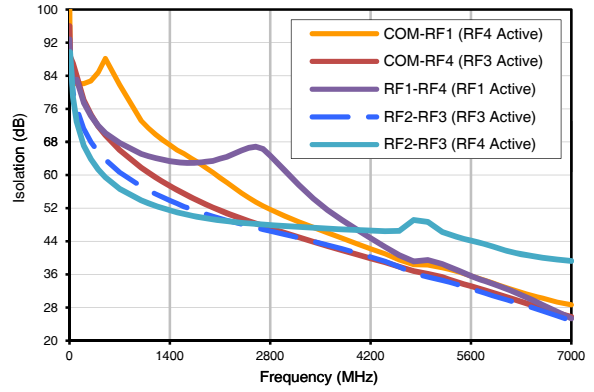


Typical Performance Curves

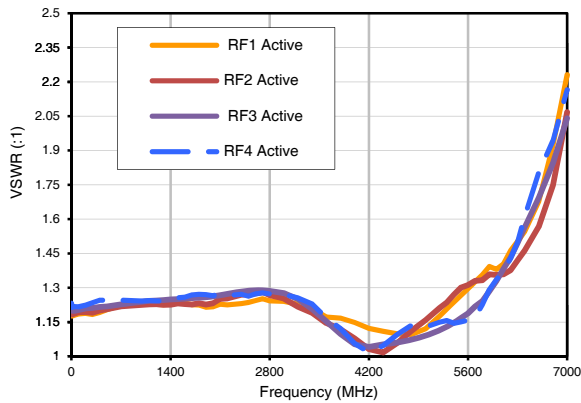
Insertion Loss
Temperature -40°C



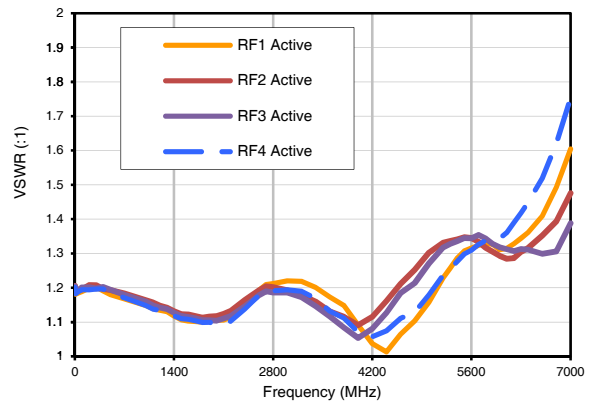
Isolation
Temperature = -40°C



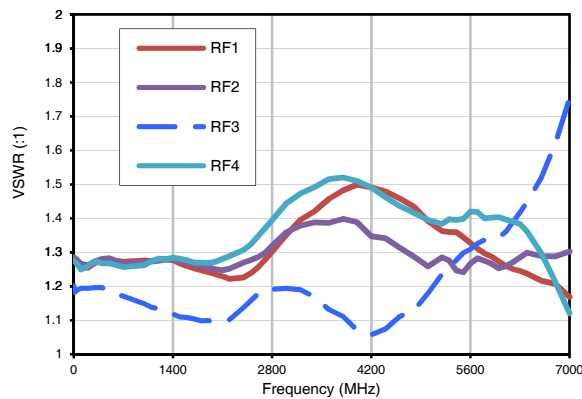
VSWR COM
Temperature = -40°C



VSWR (RF1, RF2, RF3, RF4)
Temperature = -40°C



Off (terminated) State VSWR
Temperature = -40°C

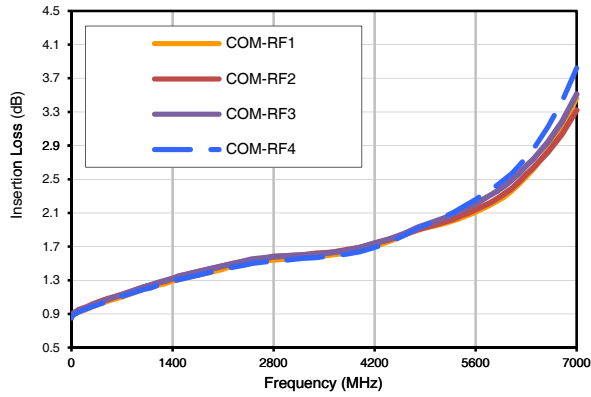


Notes

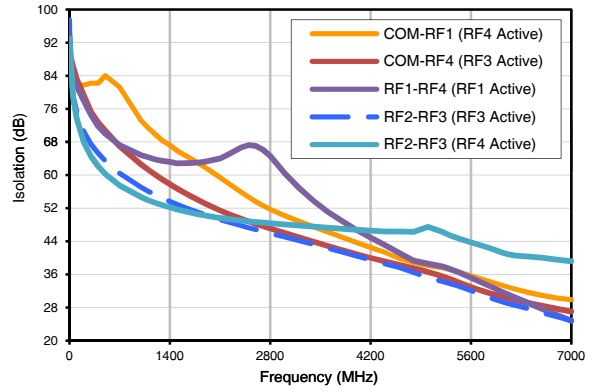
- A. Performance and quality attributes and conditions not expressly stated in this specification document are intended to be excluded and do not form a part of this specification document.
- B. Electrical specifications and performance data contained in this specification document are based on Mini-Circuits' applicable established test performance criteria and measurement instructions.
- C. The parts covered by this specification document are subject to Mini-Circuits' standard limited warranty and terms and conditions (collectively, "Standard Terms"). Purchasers of this part are entitled to the rights and benefits contained therein. For a full statement of the Standard Terms and the exclusive rights and remedies thereunder, please visit Mini-Circuits' website at: www.minicircuits.com/MCLStore/terms.jsp

Typical Performance Curves

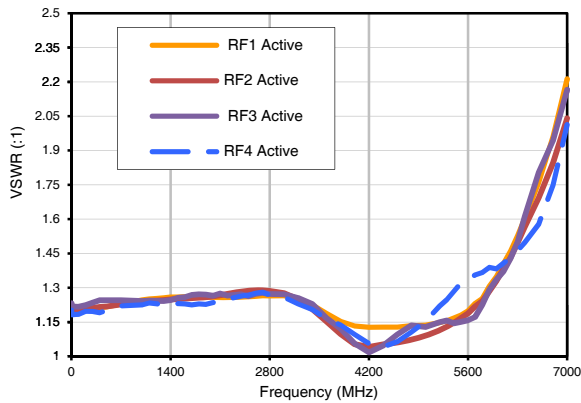
Insertion Loss
Temperature +25°C



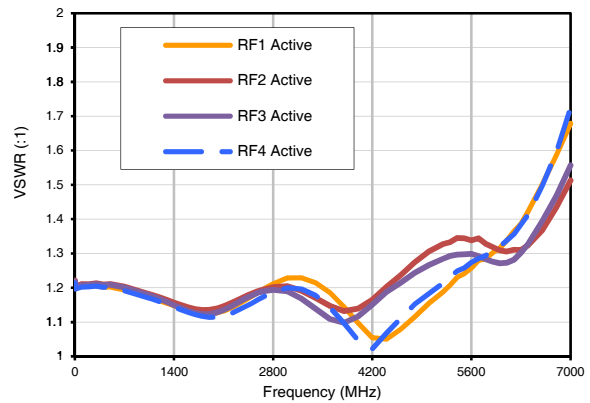
Isolation
Temperature = +25°C



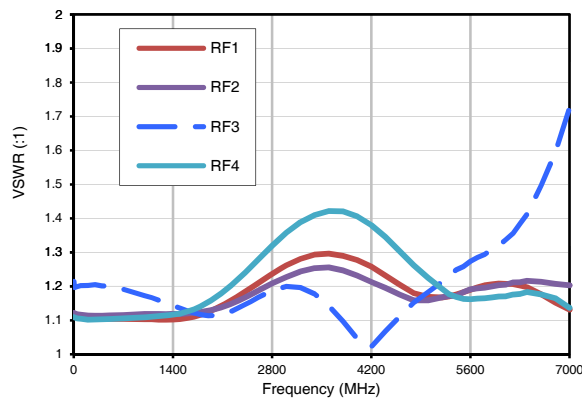
VSWR COM
Temperature = +25°C



VSWR (RF1, RF2, RF3, RF4)
Temperature = +25°C



Off (terminated) State VSWR
Temperature = +25°C

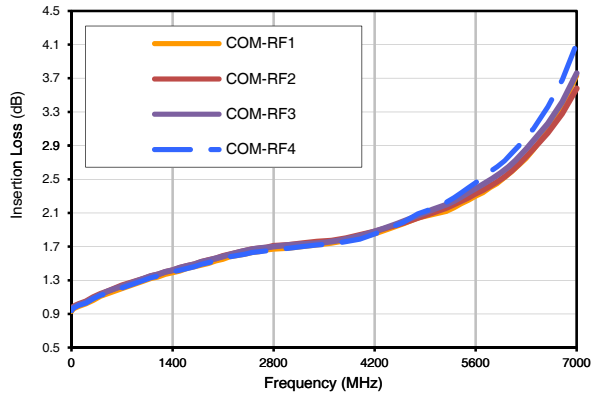


Notes

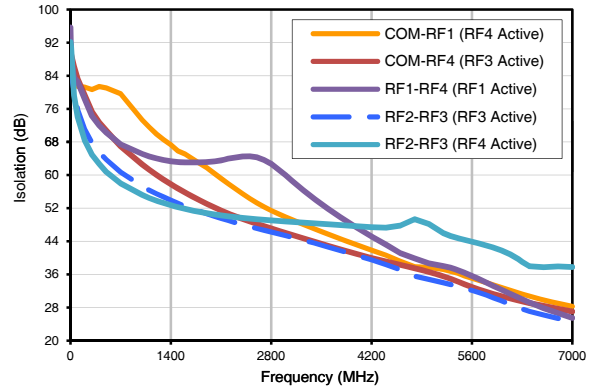
- A. Performance and quality attributes and conditions not expressly stated in this specification document are intended to be excluded and do not form a part of this specification document.
- B. Electrical specifications and performance data contained in this specification document are based on Mini-Circuits' applicable established test performance criteria and measurement instructions.
- C. The parts covered by this specification document are subject to Mini-Circuits' standard limited warranty and terms and conditions (collectively, "Standard Terms"). Purchasers of this part are entitled to the rights and benefits contained therein. For a full statement of the Standard Terms and the exclusive rights and remedies thereunder, please visit Mini-Circuits' website at: www.minicircuits.com/MCLStore/terms.jsp

Typical Performance Curves

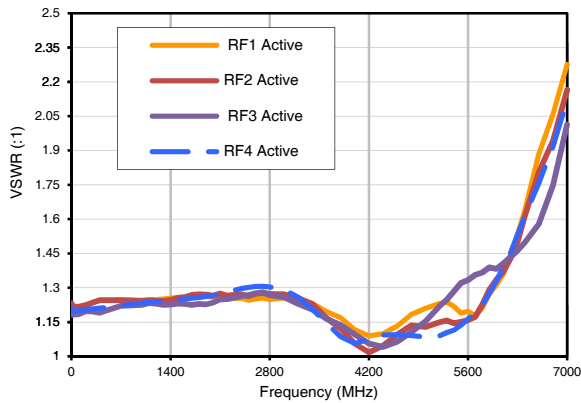
Insertion Loss
Temperature = +85°C



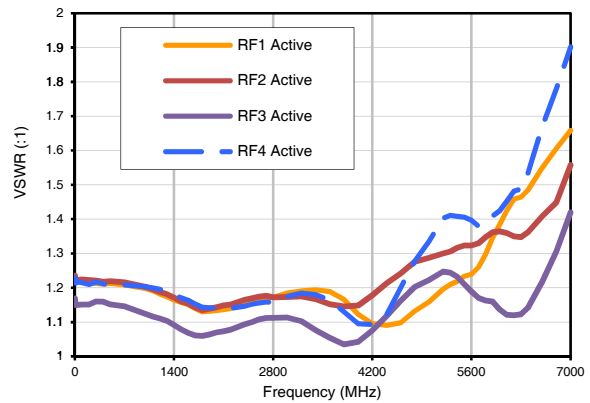
Isolation
Temperature = +85°C



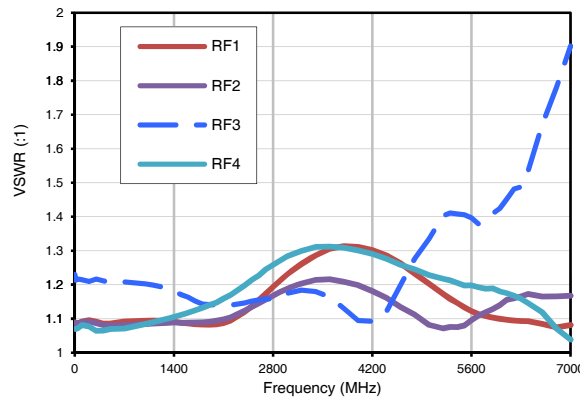
VSWR COM
Temperature = +85°C



VSWR (RF1, RF2, RF3, RF4)
Temperature = +85°C



Off (terminated) State VSWR
Temperature = +85°C



Notes

- A. Performance and quality attributes and conditions not expressly stated in this specification document are intended to be excluded and do not form a part of this specification document.
- B. Electrical specifications and performance data contained in this specification document are based on Mini-Circuits' applicable established test performance criteria and measurement instructions.
- C. The parts covered by this specification document are subject to Mini-Circuits' standard limited warranty and terms and conditions (collectively, "Standard Terms"); Purchasers of this part are entitled to the rights and benefits contained therein. For a full statement of the Standard Terms and the exclusive rights and remedies thereunder, please visit Mini-Circuits' website at www.minicircuits.com/MCStore/terms.jsp