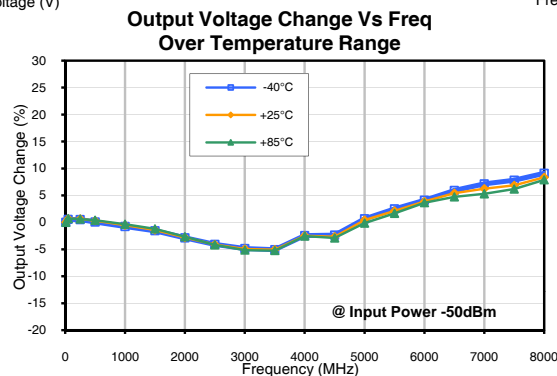
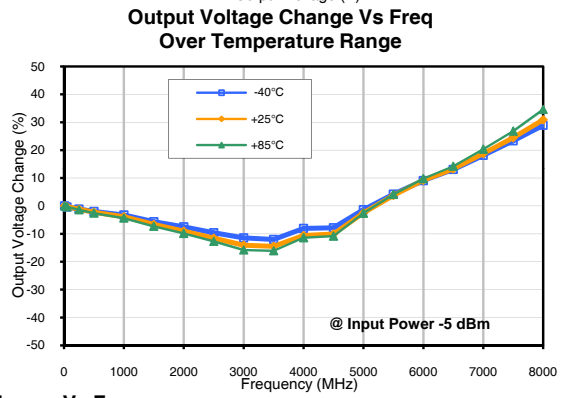
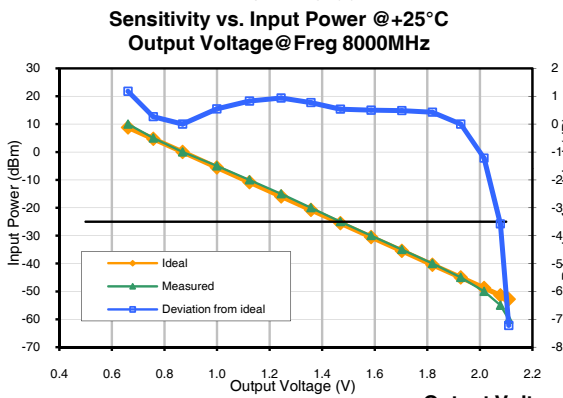
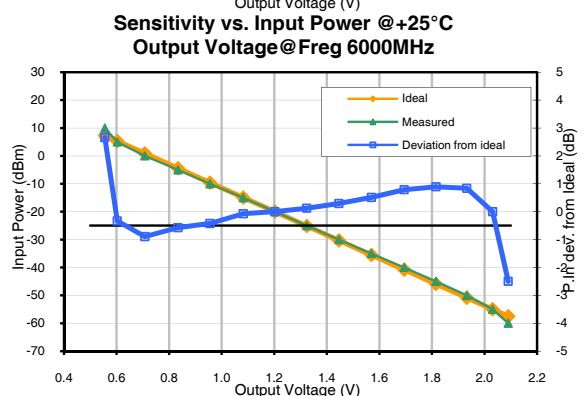
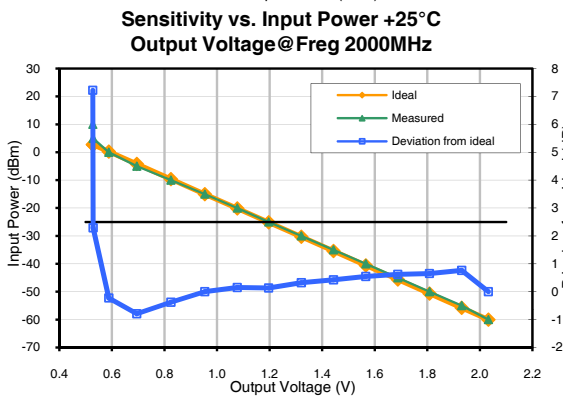
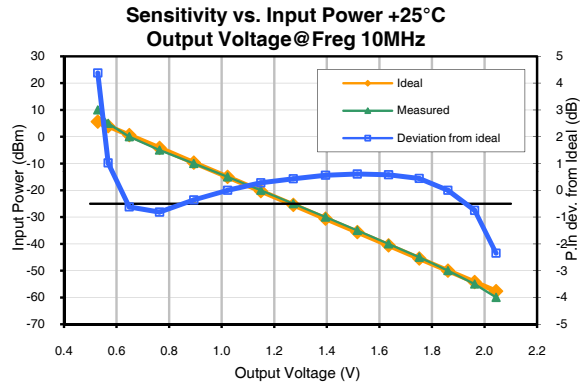
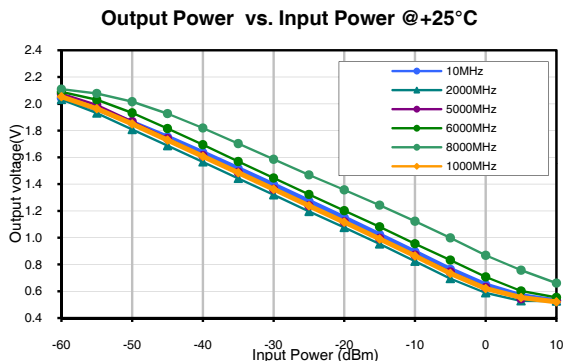


Power Detector

ZX47-60LN+

Typical Performance Curves

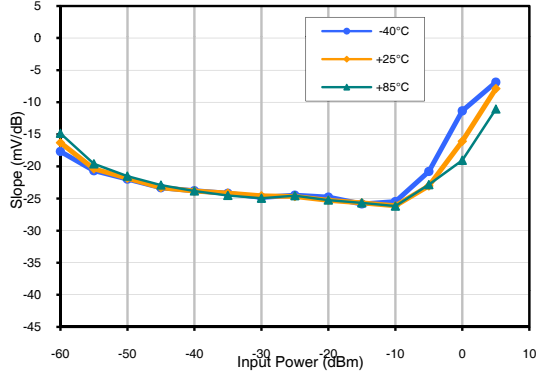


Power Detector

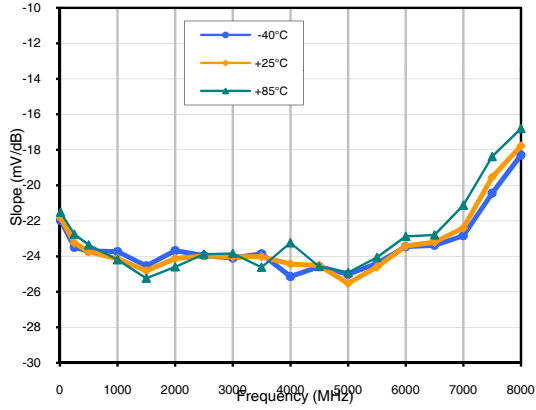
ZX47-60LN+

Typical Performance Curves

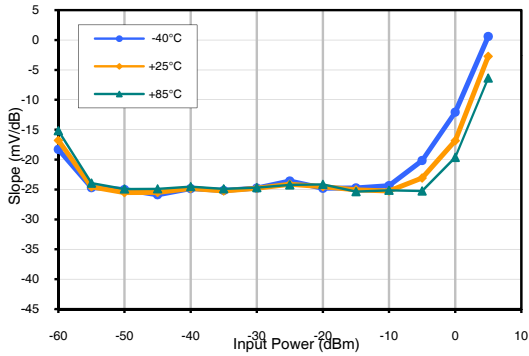
Slope Vs Input Power Over Temperature Range @ Freq 10MHz



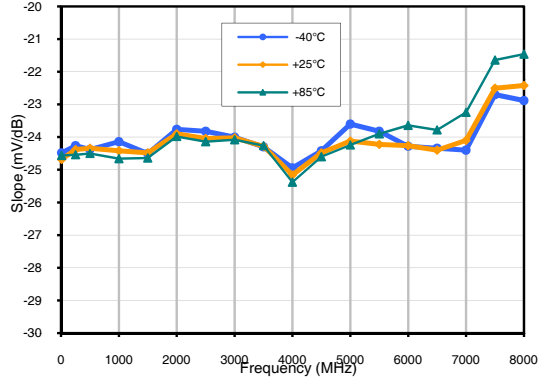
Slope Vs Freq Over Temperature Range @ Input Power -50dBm



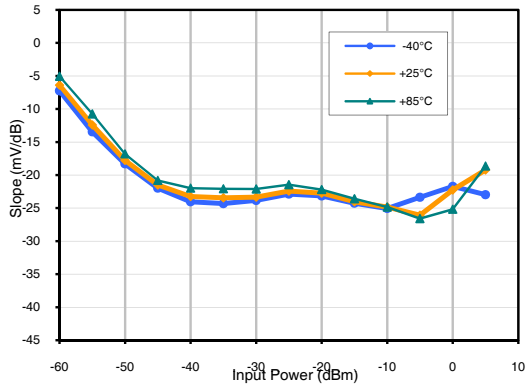
Slope Vs Input Power Over Temperature Range @ Freq 5000MHz



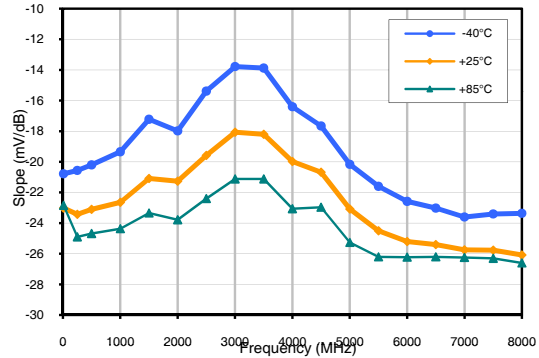
Slope Vs Freq Over Temperature Range @ Input Power -25dBm



Slope Vs Input Power Over Temperature Range @ Freq 8000MHz



Slope Vs Freq Over Temperature Range @ Input Power -5dBm



ISO 9001 ISO 14001 AS 9100 CERTIFIED

For detailed performance specs & shopping online see web site

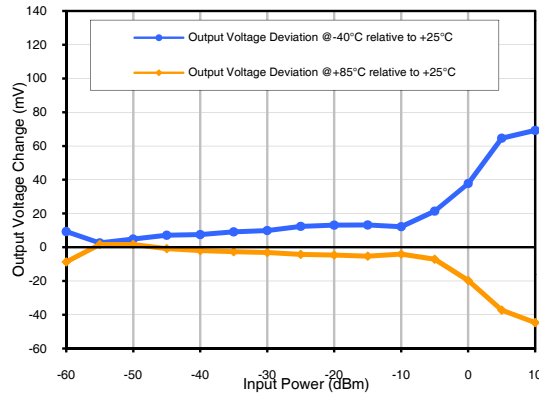
P.O. Box 350166, Brooklyn, New York 11235-0003 (718) 934-4500 Fax (718) 332-4661 The Design Engineers Search Engine Provides ACTUAL Data Instantly at minicircuits.com

IF/RF MICROWAVE COMPONENTS

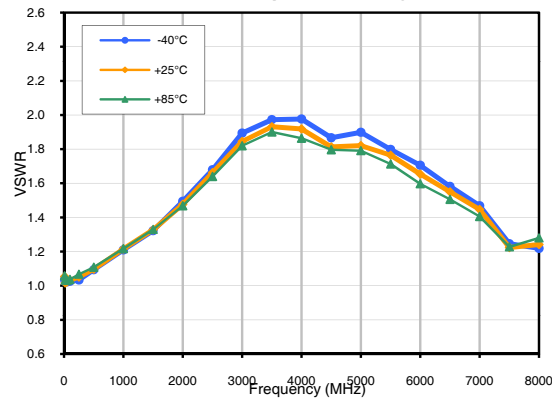
Notes: 1. Performance and quality attributes and conditions not expressly stated in this specification sheet are intended to be excluded and do not form a part of this specification sheet. 2. Electrical specifications and performance data contained herein are based on Mini-Circuits' applicable established test performance criteria and measurement instructions. 3. The parts covered by this specification sheet are subject to Mini-Circuits standard limited warranty and terms and conditions (collectively, "Standard Terms"); Purchasers of this part are entitled to the rights and benefits contained therein. For a full statement of the Standard Terms and the exclusive rights and remedies thereunder, please visit Mini-Circuits' website at www.minicircuits.com/MCIStore/terms.jsp.

Typical Performance Curves

Output Voltage Change Vs Input Power Over Temperature Range



VSWR Vs Freq Over Temperature Range



Temperature Sensor Voltage Vs Ambient Temperature

