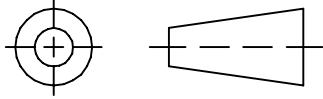


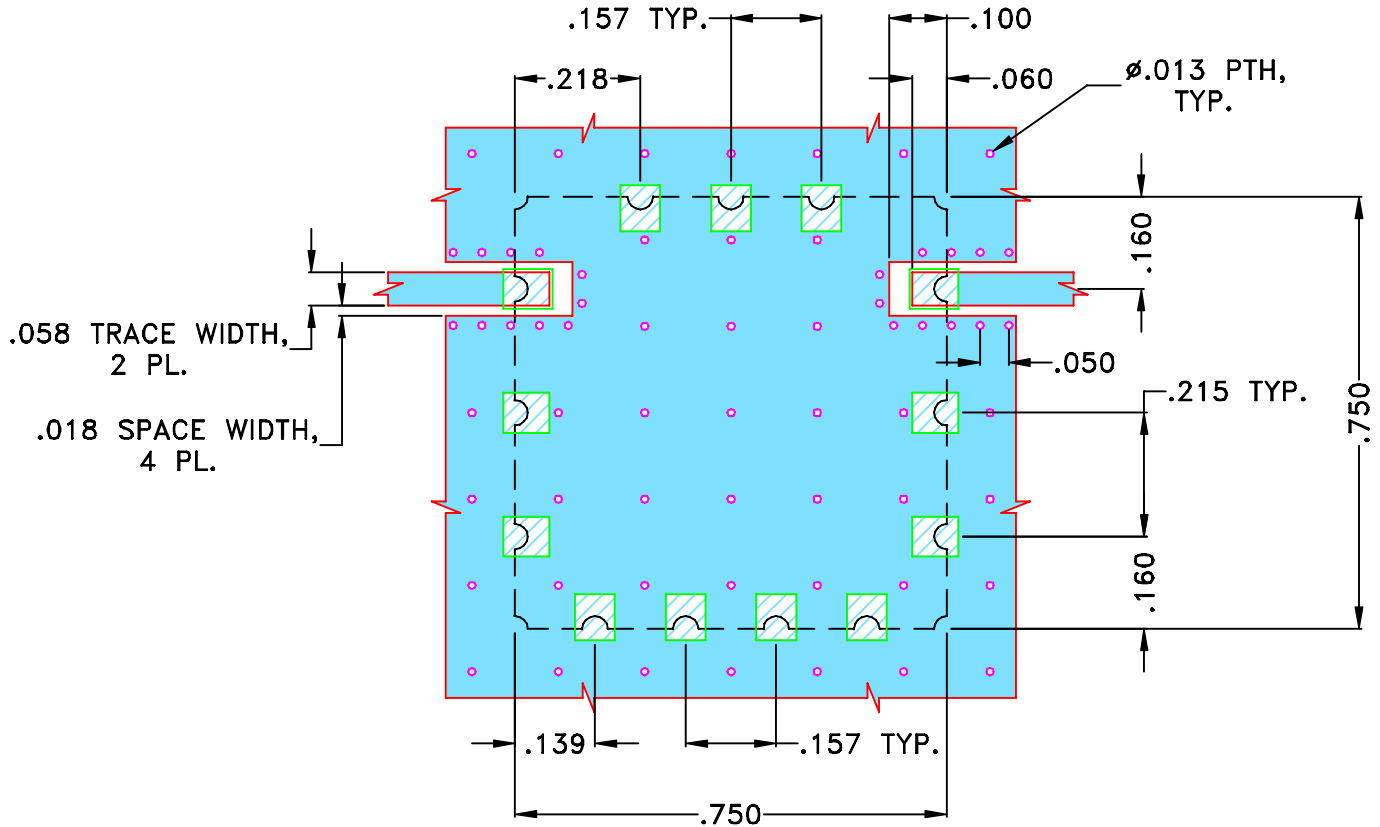
THIRD ANGLE PROJECTION



REVISIONS

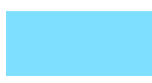
| REV OR | ECN No. | DESCRIPTION | DATE   | DR  | AUTH |
|--------|---------|-------------|--------|-----|------|
|        | M137721 | NEW RELEASE | JUN 12 | DDR | KG   |
|        |         |             |        |     |      |
|        |         |             |        |     |      |

**SUGGESTED MOUNTING CONFIGURATION FOR  
MP1766 CASE STYLE "13FL01" PIN CODE**



**NOTES:**

- TRACE WIDTH IS SHOWN FOR OAK (OAK-602) WITH DIELECTRIC THICKNESS .022"±.0015". COPPER: 1/2 OZ. EACH SIDE.  
FOR OTHER MATERIALS TRACE WIDTH MAY NEED TO BE MODIFIED.
- BOTTOM SIDE OF THE PCB IS CONTINUOUS GROUND PLANE.

 DENOTES PCB COPPER LAYOUT WITH SMOBC  
(SOLDER MASK OVER BARE COPPER)

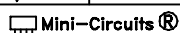
 DENOTES COPPER LAND PATTERN FREE OF SOLDERMASK

| UNLESS OTHERWISE SPECIFIED                                 | INITIALS       | DATE      |
|--|----------------|-----------|
| DIMENSIONS ARE IN INCHES                                   | DRAWN<br>DDR   | 22 JUN 12 |
| TOLERANCES ON:<br>2 PL DECIMALS ±<br>3 PL DECIMALS ± .005" | CHECKED<br>MD  | 22 JUN 12 |
| ANGLES ±<br>FRACTIONS ±                                    | APPROVED<br>GM | 22 JUN 12 |

 **Mini-Circuits®** 13 Neptune Avenue  
Brooklyn NY 11235

**PL, 13FL01, MP1766, BPF,  
TB-684+, 50 Ohm**

|                  |                     |                          |            |
|------------------|---------------------|--------------------------|------------|
| SIZE<br>A        | CODE IDENT<br>15542 | DRAWING NO:<br>98-PL-373 | REV:<br>OR |
| FILE:<br>98PL373 | SCALE:<br>4:1       | SHEET:<br>1 OF 1         |            |

 Mini-Circuits®  
THIS DOCUMENT AND ITS CONTENTS ARE THE PROPERTY OF MINI-CIRCUITS.  
EXCEPT FOR USE EXPRESSLY GRANTED, IN WRITING, TO ITS VENDORS, VENDEE  
AND THE UNITED STATES GOVERNMENT, MINI-CIRCUITS RESERVES ALL PROPRIETARY  
DESIGN, USE, MANUFACTURING AND REPRODUCTION RIGHTS THERE TO.  
THESE CONTENTS SHALL NOT BE USED, DUPLICATED OR DISCLOSED TO ANY OUTSIDE  
PARTY, IN WHOLE OR IN PART, WITHOUT WRITTEN PERMISSION OF MINI-CIRCUITS.