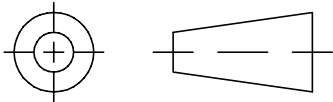
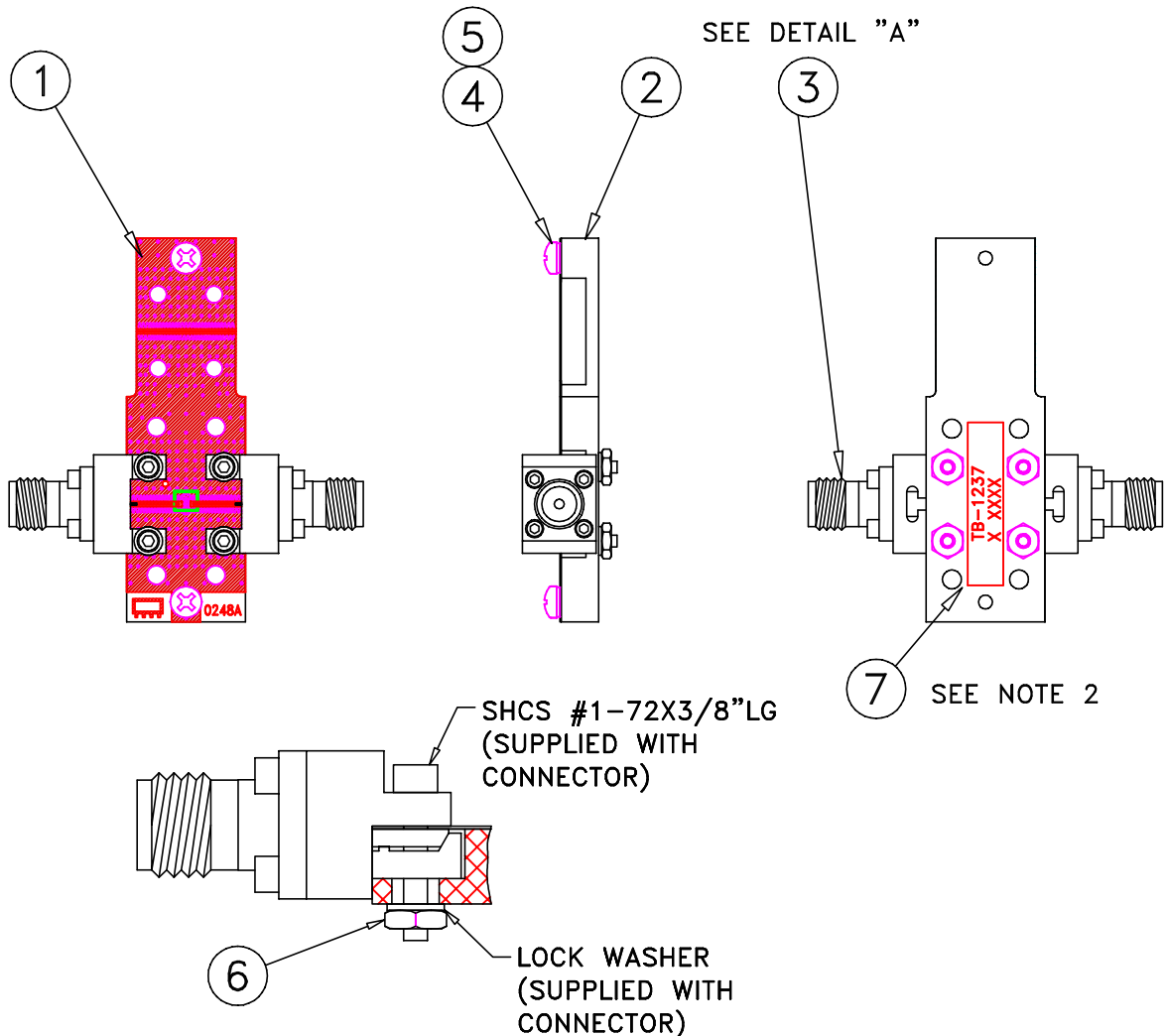


THIRD ANGLE PROJECTION



REVISIONS

REV	ECN No.	DESCRIPTION	DATE	DR	AUTH
OR	NPO-002364	NEW RELEASE	DEC 21	SM	CGD



DETAIL "A"

CONNECTOR INSTALLATION
(SCALE 2:1)

NOTES:

- FOR ITEM DESCRIPTIONS, REFER TO -09 PAGE. DESIGNATION NUMBERS ON -20 PAGE CORRESPOND TO THE NUMBERS ON -09 PAGE.
- FOR TEXT HEIGHT & STYLE ON THE LABEL, REFER TO D3-G209.

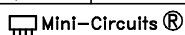
UNLESS OTHERWISE SPECIFIED	INITIALS	DATE
DIMENSIONS ARE IN INCHES	SM	15 DEC 21
TOLERANCES ON:	CGD	15 DEC 21
2 PL DECIMALS ±	CGD	15 DEC 21
3 PL DECIMALS ±		
ANGLES ±		
FRACTIONS ±		



Mini-Circuits®

13 Neptune Avenue
Brooklyn NY 11235

TEST BOARD FOR BFCQ,
NL1008C-7, 50 OHM

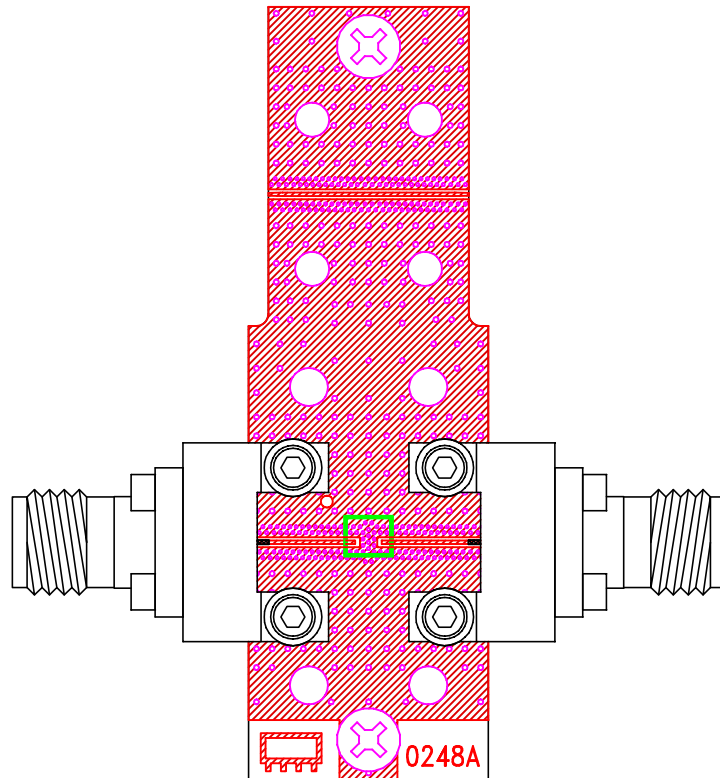


THIS DOCUMENT AND ITS CONTENTS ARE THE PROPERTY OF MINI-CIRCUITS. EXCEPT FOR USE EXPRESSLY GRANTED, IN WRITING, TO ITS VENDORS, VENDEE AND THE UNITED STATES GOVERNMENT, MINI-CIRCUITS RESERVES ALL PROPRIETARY DESIGN, USE, MANUFACTURING AND REPRODUCTION RIGHTS THERETO. THESE CONTENTS SHALL NOT BE USED, DUPLICATED OR DISCLOSED TO ANY OUTSIDE PARTY, IN WHOLE OR IN PART, WITHOUT WRITTEN PERMISSION OF MINI-CIRCUITS.

SIZE A	CODE IDENT 15542	DRAWING NO: TB-1237-20	REV: OR
FILE: WTB-1237	SCALE: 1:1	SHEET: 1 OF 2	

ASHEETA1.DWG REV:A DATE:01/12/95

Evaluation Board and Circuit



TB-1237

Notes:

1. 50 Ohm 1.85 Female connectors.
2. PCB Material: Megtron 7(N) or equivalent,
Dielectric Constant=3.4, Thickness=.005 inch.

 Mini-Circuits®