



Mini-Circuits

# SURFACE MOUNT <sup>top hat</sup> RF Transformer

## SCTX4-32HP-20W+

12.5/50Ω 1 to 310 MHz 20 Watt 1:4 Ratio

### THE BIG DEAL

- High Power Input, 20 Watt max.
- Low Insertion Loss, 0.3 dB typ.
- Small size, 0.50 x 0.50 x 0.20"
- Excellent Return Loss, 23 dB typ.
- DC pass from IN to OUT



Generic photo used for illustration purposes only

CASE STYLE: CK2335

### +RoHS Compliant

The +Suffix identifies RoHS Compliance.  
See our website for methodologies and qualifications

### APPLICATIONS

- Military mobile
- PCS
- BALUN
- Diode matching

### PRODUCT OVERVIEW

Mini-Circuits' SCTX4-32HP-20W+ is a high-power, surface-mount transformer with a secondary/primary impedance ratio of 1:4, covering the 1.0 to 320 MHz band. DC current pass IN to OUT, the transformer is capable of handling RF input power up to 20W. It provides low insertion loss (0.3 dB) as well as good matching VSWR 1.10:1. Featuring core and wire construction mounted on PCB, the unit comes enclosed in a miniature, shielded package measuring just 0.50 x 0.50 x 0.20", ideal for dense circuit board layouts.

### KEY FEATURES

Feature	Advantages
High RF Power Handling (20W)	Supports systems with high power requirements in small device size.
Low Insertion Loss, 0.3 dB	Provides excellent transmission of signal power from input to output.
Good Return Loss, 20 dB typ	Provide good in to output impedance matching.
Small footprint, 0.50 x 0.50 x 0.20"	Accommodates tight space requirements for dense PCB layouts.

REV. A  
ECO-020468  
SCTX4-32HP-20W+  
MCL NY  
240103





ELECTRICAL SPECIFICATIONS AT 25°C

Parameter	Frequency (MHz)	Min.	Typ.	Max.	Unit
Impedance Ratio (secondary/primary)			4		
Frequency Range		1	—	310	MHz
Insertion Loss (average)	5 - 100 1 - 310	— —	0.3 0.5	0.5 0.9	dB
Return Loss	5 - 100 1 - 310	20 14	30 20	— —	dB
Input Power	5 - 100	—	—	20	Watt

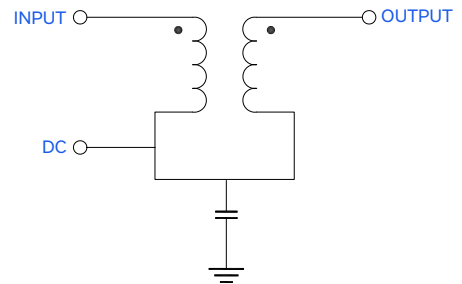
\*\* Below 30 MHz current need to be linary decreased to 0 mA to achieve specified performance.

ABSOLUTE MAXIMUM RATINGS

Parameter	Ratings
Operating Temperature	-40°C to 85°C case*
Storage Temperature	-55°C to 100°C
DC Current	1A/max **

\*Case temperature is defined as temperature on ground leads.  
Permanent damage may occur if any of these limits are exceeded.

CONFIGURATION D1





top hat  
SURFACE MOUNT  
RF Transformer

SCTX4-32HP-20W+

Mini-Circuits

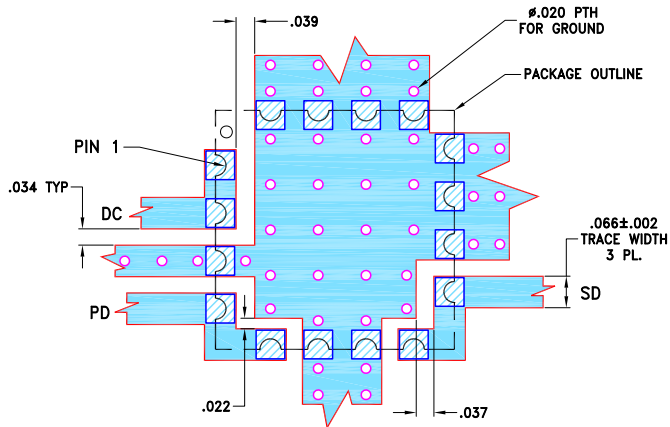
12.5/50Ω 1 to 310 MHz 20 Watt 1:4 Ratio

PAD CONNECTIONS

PRIMARY (12.5 ohm)	4,5
SECONDARY (50 ohm)	8,9
DC IN	1,2
GND	all others

PRODUCT MARKING: N/A

DEMO BOARD MCL P/N: TB-930+  
SUGGESTED PCB LAYOUT (PL-533)

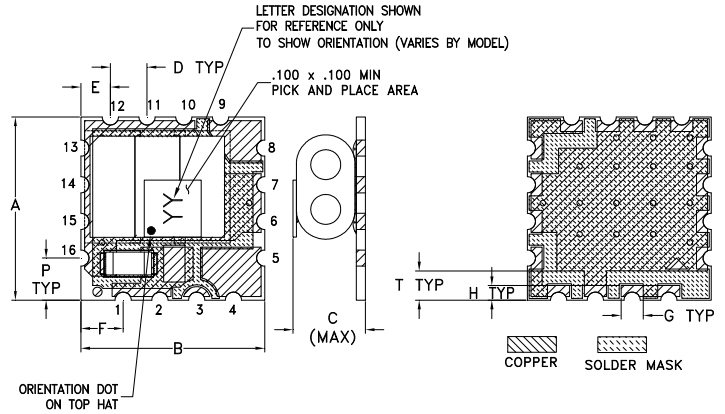


NOTES:

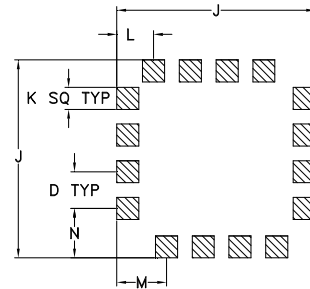
- TRACE WIDTH IS SHOWN FOR ROGERS R04350B, WITH DIELECTRIC THICKNESS .030"±.002". COPPER: 1/2 Oz. EACH SIDE. FOR OTHER MATERIALS TRACE WIDTH MAY NEED TO BE MODIFIED.
- BOTTOM SIDE OF THE PCB IS CONTINUOUS GROUND PLANE.

- DENOTES PCB COPPER LAYOUT WITH SMOBC (SOLDER MASK OVER BARE COPPER)
- DENOTES COPPER LAND PATTERN FREE OF SOLDERMASK

OUTLINE DRAWING



PCB Land Pattern



Suggested Layout,  
Tolerance to be within ±.002

OUTLINE DIMENSIONS (Inch mm)

A	B	C	D	E	F	G	H
.500	.500	.209	.100	.080	.115	.060	.040
12.70	12.70	5.31	2.54	2.03	2.92	1.52	1.02
J	K	L	M	N	P	T	wt.
.540	.060	.100	.135	.135	.115	.080	grams
13.72	1.52	2.54	3.43	3.43	2.92	2.03	1.0

TAPE & REEL INFORMATION: F37



Mini-Circuits

# SURFACE MOUNT <sup>top hat</sup> RF Transformer

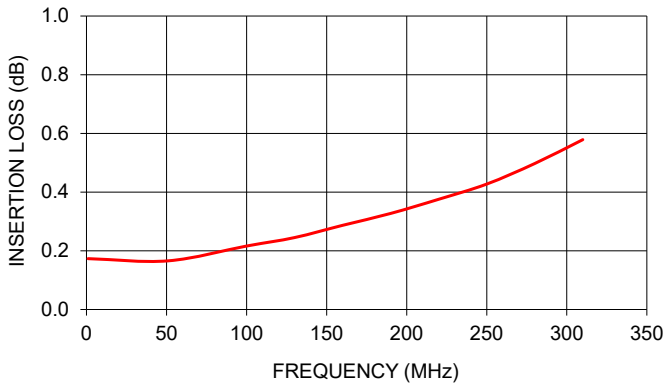
## SCTX4-32HP-20W+

12.5/50Ω 1 to 310 MHz 20 Watt 1:4 Ratio

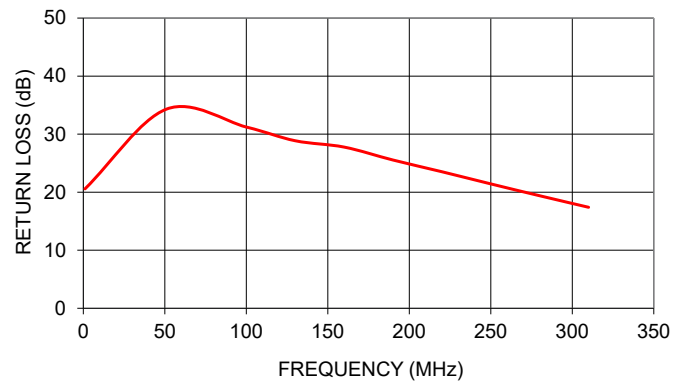
### TYPICAL PERFORMANCE DATA

Frequency (MHz)	Insertion Loss (dB)	Primary Return Loss (dB)
1	0.17	20.57
51	0.17	34.31
100	0.22	31.23
130	0.25	28.86
160	0.29	27.77
190	0.33	25.54
220	0.38	23.53
250	0.43	21.43
280	0.50	19.39
310	0.58	17.40

SCTX4-32HP-20W+  
INSERTION LOSS



SCTX4-32HP-20W+  
INPUT RETURN LOSS



- NOTES**
- A. Performance and quality attributes and conditions not expressly stated in this specification document are intended to be excluded and do not form a part of this specification document.
  - B. Electrical specifications and performance data contained in this specification document are based on Mini-Circuit's applicable established test performance criteria and measurement instructions.
  - C. The parts covered by this specification document are subject to Mini-Circuits standard limited warranty and terms and conditions (collectively, "Standard Terms"); Purchasers of this part are entitled to the rights and benefits contained therein. For a full statement of the standard. Terms and the exclusive rights and remedies thereunder, please visit Mini-Circuits' website at [www.minicircuits.com/terms/viewterm.html](http://www.minicircuits.com/terms/viewterm.html)

