

# Cavity Bandpass Filters

50Ω DC to 40 GHz



## The Big Deal

- Very low insertion loss with excellent power handling
- Very fast roll-off with wide stopband
- Passbands up to 36 GHz
- Stopbands up to 40 GHz

## Product Overview

Mini-Circuits' cavity filters are designed by implementing resonant structures with very high Q and are ideal for narrow-band, high-selectivity applications. These designs can provide bandwidths as narrow as 1% with very high selectivity and excellent low noise floor. Low insertion loss combined with excellent power handling makes them well-suited for transmitter and receiver front end. Advanced filter design and construction enables stopband width greater than 3x the center frequency.

Mini-Circuits' cavity filters feature a special protective assembly to prevent accidental de-tuning that would otherwise require expensive replacement or return to factory for re-tuning. Custom integrated assembly with LNA and bias tees results in greatly simplifying system integration. Precise machining allows realization of cavity filters with small form factors for applications where size is critical. Excellent repeatability across units is achieved through precise tuning and process control.

## Key Features

Feature	Advantages
Low insertion loss	Low signal loss results in better SNR in receiver front end and better power delivery to antenna in transmitter
Fast roll-off	Higher selectivity results in better adjacent channel rejection and dynamic range
Wide stopband	Wide spur free band results in better receiver sensitivity
High power handling	Well suited for transmitter application
Protective assembly	Prevents accidental de-tuning of precisely tuned resonant circuit

### Notes

- Performance and quality attributes and conditions not expressly stated in this specification document are intended to be excluded and do not form a part of this specification document.
- Electrical specifications and performance data contained in this specification document are based on Mini-Circuit's applicable established test performance criteria and measurement instructions.
- The parts covered by this specification document are subject to Mini-Circuits standard limited warranty and terms and conditions (collectively, "Standard Terms"); Purchasers of this part are entitled to the rights and benefits contained therein. For a full statement of the Standard Terms and the exclusive rights and remedies thereunder, please visit Mini-Circuits' website at [www.minicircuits.com/MCLStore/terms.jsp](http://www.minicircuits.com/MCLStore/terms.jsp)



# Cavity Bandpass Filter

## ZVBP-8250-S+

50Ω 8025 to 8475 MHz



Generic photo used for illustration purposes only

CASE STYLE: PN2113

Connectors	Model
SMA-F/M	ZVBP-8250-S+

### Features

- Low insertion loss, 1.0 dB typical
- High rejection
- Fast roll-off
- Connectorized package
- Small size

### Applications

- Satellite
- Radar

### Electrical Specifications at 25°C

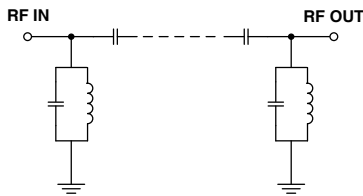
Parameter	F#	Frequency (MHz)	Min.	Typ.	Max.	Unit	
Pass Band	Center Frequency	-	-	8250	-	MHz	
	Insertion Loss	F1-F2	8025-8475	-	1.0	1.5	dB
	VSWR	F1-F2	8025-8475	-	1.5	1.7	:1
Stop Band, Lower	Insertion Loss	DC-F3	DC - 7650	20	28	-	dB
	VSWR	DC-F3	DC - 7650	-	40	-	:1
Stop Band, Upper	Insertion Loss	F4-F5	8925-11000	20	28	-	dB
	VSWR	F4-F5	8925-11000	-	40	-	:1

### Maximum Ratings

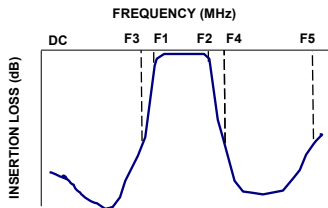
Operating Temperature	-40°C to 85°C
Storage Temperature	-55°C to 100°C
RF Power Input	10 W max.

Permanent damage may occur if any of these limits are exceeded.

### Functional Schematic



### Typical Frequency Response

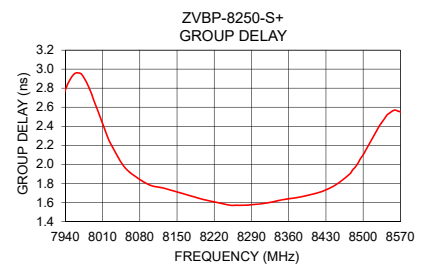
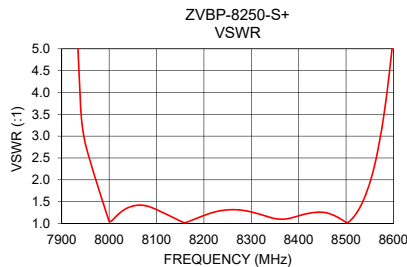
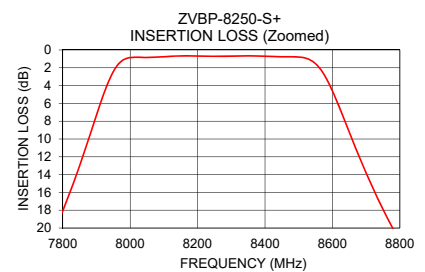
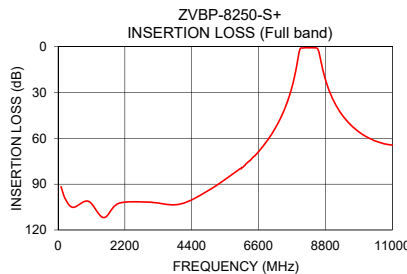


### Typical Performance Data at 25°C

Frequency (MHz)	Insertion Loss (dB)	VSWR (:1)	Frequency (MHz)	Group Delay (ns)
100	91.71	347.44	8025	2.22
500	105.19	108.58	8050	1.98
3000	101.78	124.09	8075	1.86
7000	58.19	64.35	8100	1.78
7650	29.90	57.91	8125	1.75
7770	20.80	44.55	8150	1.71
7940	3.18	3.63	8175	1.67
7950	2.42	2.81	8200	1.63
8000	0.85	1.05	8225	1.60
8025	0.81	1.26	8250	1.57
8250	0.71	1.31	8260	1.57
8475	0.76	1.18	8275	1.57
8500	0.79	1.02	8300	1.58
8570	2.45	2.84	8325	1.60
8580	3.07	3.50	8350	1.63
8780	20.10	41.37	8375	1.65
8925	28.85	66.82	8400	1.68
9300	43.24	75.53	8425	1.72
9800	54.20	96.51	8450	1.79
11000	64.38	96.51	8475	1.90

### +RoHS Compliant

The +Suffix identifies RoHS Compliance. See our web site for RoHS Compliance methodologies and qualifications



### Notes

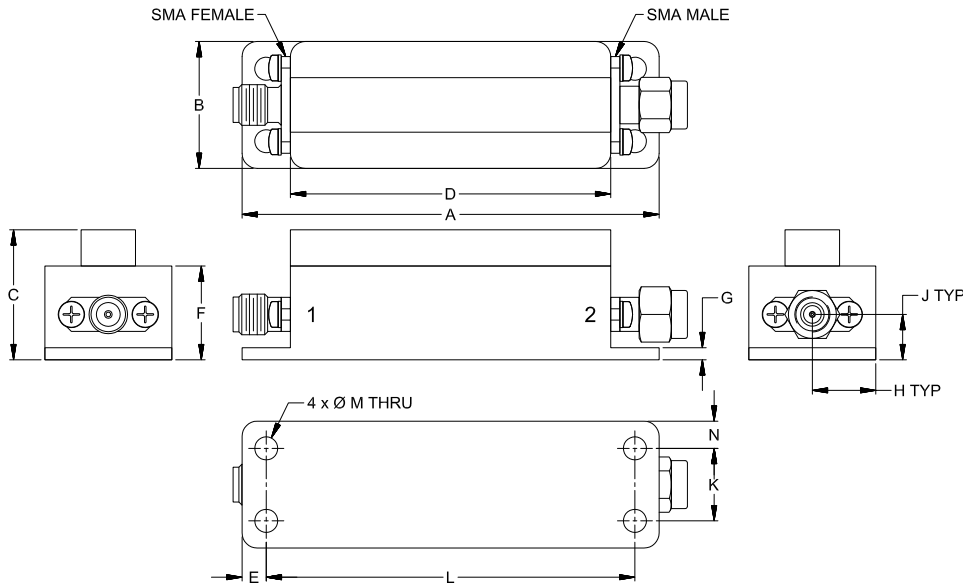
- Performance and quality attributes and conditions not expressly stated in this specification document are intended to be excluded and do not form a part of this specification document.
- Electrical specifications and performance data contained in this specification document are based on Mini-Circuits' applicable established test performance criteria and measurement instructions.
- The parts covered by this specification document are subject to Mini-Circuits standard limited warranty and terms and conditions (collectively, "Standard Terms"); Purchasers of this part are entitled to the rights and benefits contained therein. For a full statement of the Standard Terms and the exclusive rights and remedies thereunder, please visit Mini-Circuits' website at [www.minicircuits.com/MCLStore/terms.jsp](http://www.minicircuits.com/MCLStore/terms.jsp)



## Coaxial Connections

PORT - 1	SMA-FEMALE
PORT - 2	SMA-MALE

## Outline Drawing



## Outline Dimensions ( $\frac{\text{inch}}{\text{mm}}$ )

A	B	C	D	E	F	G	H
2.72	.83	.85	2.09	.16	.61	.08	.41
69.00	21.00	21.50	53.00	4.00	15.50	2.00	10.50
J	K	L	M	N	Wt.		
.30	.472	2.401	.150	.18	grams		
7.50	12.00	61.00	3.81	4.50	56		

Note: Please refer to case style drawing for details.

### Notes

- A. Performance and quality attributes and conditions not expressly stated in this specification document are intended to be excluded and do not form a part of this specification document.
- B. Electrical specifications and performance data contained in this specification document are based on Mini-Circuit's applicable established test performance criteria and measurement instructions.
- C. The parts covered by this specification document are subject to Mini-Circuits standard limited warranty and terms and conditions (collectively, "Standard Terms"); Purchasers of this part are entitled to the rights and benefits contained therein. For a full statement of the Standard Terms and the exclusive rights and remedies thereunder, please visit Mini-Circuits' website at [www.minicircuits.com/MCLStore/terms.jsp](http://www.minicircuits.com/MCLStore/terms.jsp)

