

# Plug-In RF Transformer

50Ω

0.03 to 20 MHz

**T36-1-X65+  
T36-1-X65**



Generic photo used for illustration purposes only  
CASE STYLE: X65

**+RoHS Compliant**

The +Suffix identifies RoHS Compliance. See our web site for RoHS Compliance methodologies and qualifications

## Maximum Ratings

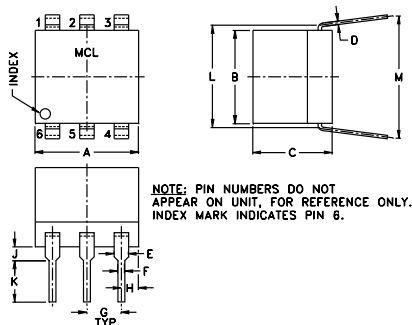
Operating Temperature	-20°C to 85°C
Storage Temperature	-55°C to 100°C
RF Power	0.25W
DC Current	30mA

Permanent damage may occur if any of these limits are exceeded.

## Pin Connections

PRIMARY DOT	4
PRIMARY	6
SECONDARY DOT	3
SECONDARY	1
SECONDARY CT	—
NOT USED	2,5

## Outline Drawing



## Outline Dimensions (inch)

A	B	C	D	E	F	G
.30	.27	.23	.010	.042	.020	.100
7.62	6.86	5.84	0.25	1.07	0.51	2.54

H	J	K	L	M	wt
.05	.04	.11	.300	.35	grams
1.27	1.02	2.79	7.62	8.89	0.50

## Features

- good return loss
- also available with flat-pack (W38) & surface mount gull-wing (KK81) leads

## Applications

- HF
- amateur radio
- impedance matching

## Transformer Electrical Specifications

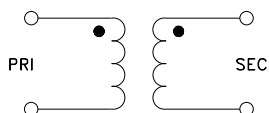
Ω RATIO (Secondary/Primary)	FREQUENCY (MHz)	INSERTION LOSS*		
		3 dB MHz	2 dB MHz	1 dB MHz
36	0.03-20	0.03-20	0.05-10	0.1-5

\*Insertion Loss is referenced to mid-band loss, 0.4 dB typ.

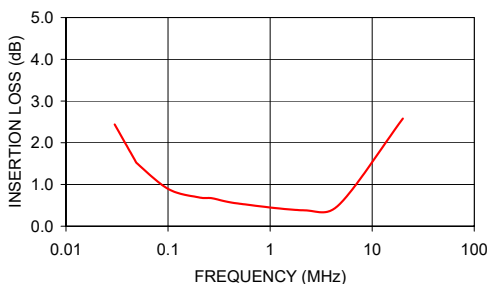
## Typical Performance Data

FREQUENCY (MHz)	INSERTION LOSS (dB)	INPUT R. LOSS (dB)
0.03	2.44	6.98
0.05	1.60	9.75
0.05	1.50	10.28
0.10	0.89	15.22
0.20	0.69	19.88
0.27	0.67	20.32
0.47	0.55	24.87
2.17	0.38	16.92
4.66	0.50	10.04
20.00	2.58	1.81

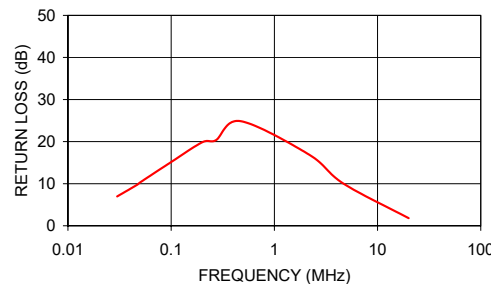
## Config. C



T36-1-X65  
INSERTION LOSS



T36-1-X65  
INPUT RETURN LOSS



## Notes

- Performance and quality attributes and conditions not expressly stated in this specification document are intended to be excluded and do not form a part of this specification document.
- Electrical specifications and performance data contained in this specification document are based on Mini-Circuit's applicable established test performance criteria and measurement instructions.
- The parts covered by this specification document are subject to Mini-Circuits standard limited warranty and terms and conditions (collectively, "Standard Terms"); Purchasers of this part are entitled to the rights and benefits contained therein. For a full statement of the Standard Terms and the exclusive rights and remedies thereunder, please visit Mini-Circuits' website at [www.minicircuits.com/MCLStore/terms.jsp](http://www.minicircuits.com/MCLStore/terms.jsp)



[www.minicircuits.com](http://www.minicircuits.com) P.O. Box 350166, Brooklyn, NY 11235-0003 (718) 934-4500 sales@minicircuits.com

REV. B  
M151107  
T36-1-X65  
IG/TD/CP/AM  
200721

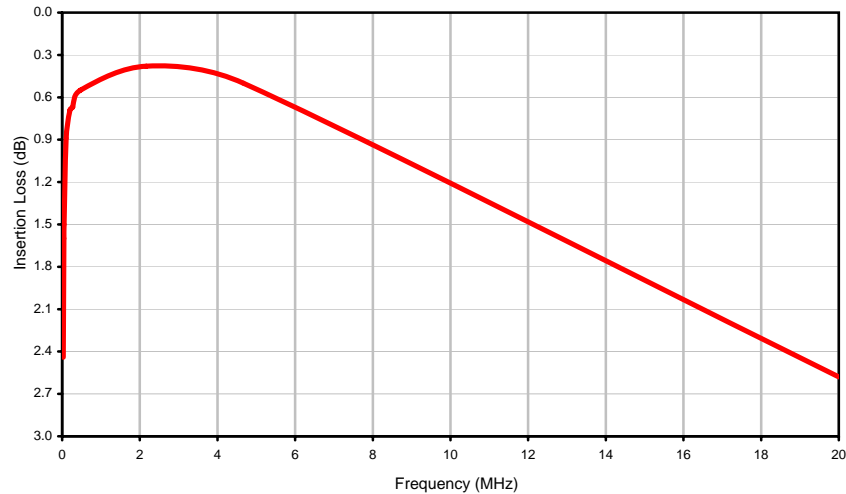
---

*Typical Performance Data*

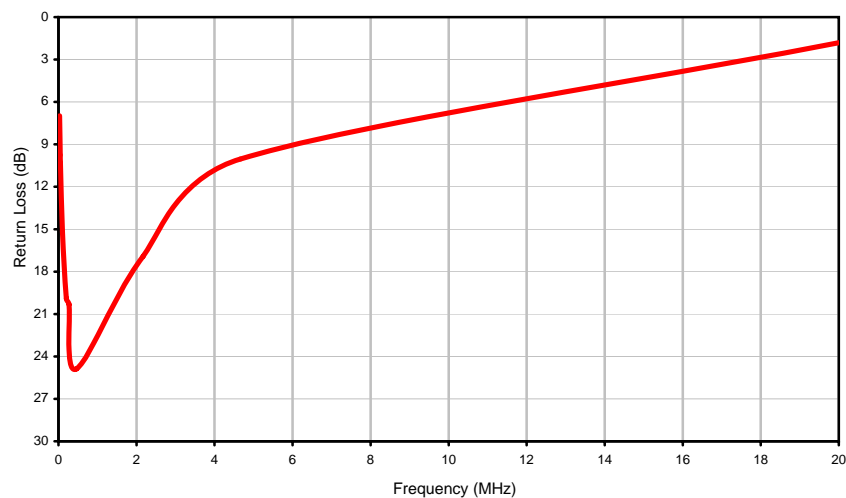
FREQUENCY (MHz)	INSERTION LOSS (dB)	RETURN LOSS (dB)
0.03	2.44	6.98
0.05	1.60	9.75
0.05	1.50	10.28
0.10	0.89	15.22
0.20	0.69	19.88
0.27	0.67	20.32
0.47	0.55	24.87
2.17	0.38	16.92
4.66	0.50	10.04
20.00	2.58	1.81

## Typical Performance Curves

Insertion Loss



Return Loss



## Outline Dimensions

**X65**



CASE #	A	B	C	D	E	F	G	H	J	K	L	M	WT. GRAM
X65	.30 (7.62)	.27 (6.86)	.23 (5.84)	.010 (0.25)	.042 (1.07)	.020 (0.51)	.100 (2.54)	.05 (1.27)	.04 (1.02)	.11 (2.79)	.300 (7.62)	.35 (8.89)	.50

Dimensions are in inches (mm)

### Notes:

- Case material: Plastic.  
Termination finish: For RoHS Case Styles: Tin Plate over Nickel Plate.  
For RoHS-5 Case Styles: Tin-Lead Plate.



INTERNET <http://www.minicircuits.com>

P.O. Box 350166, Brooklyn, New York 11235-0003 (718) 934-4500 Fax (718) 332-4661

Distribution Centers NORTH AMERICA 800-654-7949 • 417-335-5935 • Fax 417-335-5945 • EUROPE 44-1252-832600 • Fax 44-1252-837010

Mini-Circuits ISO 9001 & ISO 14001 Certified



All Mini-Circuits products are manufactured under exacting quality assurance and control standards, and are capable of meeting published specifications after being subjected to any or all of the following physical and environmental test.

Specification	Test/Inspection Condition	Reference/Spec
Operating Temperature	-20° to 85°C Ambient Environment	Individual Model Data Sheet
Storage Temperature	-55° to 100° C Ambient Environment	Individual Model Data Sheet
Thermal Shock	-55° to 100°C, 100 cycles	MIL-STD-202, Method 107, Condition A-3, except +100°C
Solder Reflow Heat	Sn-Pb Eutetic Process: 225°C peak Pb-Free Process 245° - 250°C peak	J-STD-020, Table 4-1, 4-2 and 5-2, Figure 5-1
Solderability	10X Magnification	J-STD-002, Para 4.2.5, Test S, 95% Coverage
Vibration (High Frequency)	20g peak, 10-2000 Hz, 12 times in each of three perpendicular directions (total 36)	MIL-STD-202, Method 204, Condition D
Mechanical Shock	50g, 11 ms, 1/2-sine, 18 shocks: 3 each direction, each of 3 axes	MIL-STD-202, Method 213, Condition A
Lead Integrity	2 Pound Pull, perpendicular to edge of unit	MIL-STD-202, Method 211, Condition A
Marking Resistance to Solvents	Isopropyl alcohol + mineral spirits at 25°C; terpene defluxer at 25°C; distilled water + proylene glycol monomethyl ether + monoethanolamine at 63°C to 70°C	MIL-STD-202, Method 215