

ZHL-1724MLN+ PCN Report

AN-60-095

ORIGINAL PART: ZHL-1724MLN
 REPLACEMENT PART: ZHL-1724MLN+

This replacement part has been judged by Mini-Circuits Engineering as a suitable replacement part.

CASE STYLE

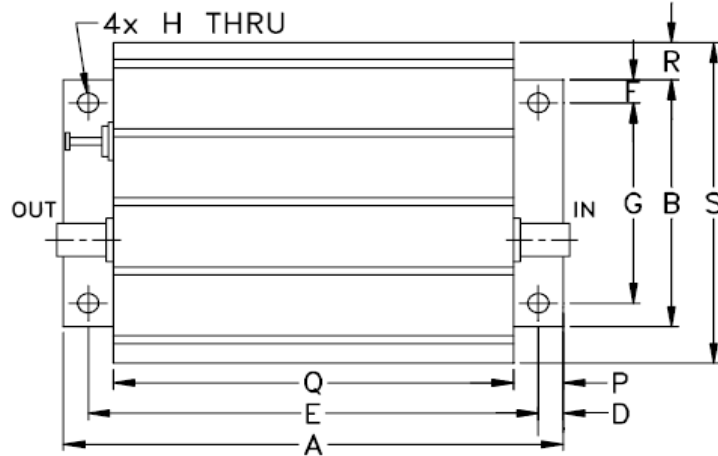
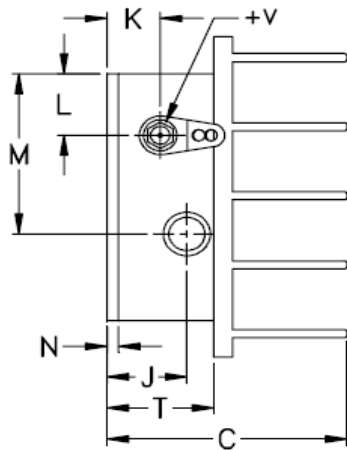
ORIGINAL PART: ZHL-1724MLN

REPLACEMENT PART: ZHL-1724MLN+

CASE STYLE: S32, No change



Outline Drawing



Outline Dimensions (inch/mm)

A	B	C	D	E	F	G	H	J	K	L	M	N	P	Q	R	S	T	wt
3.75	2.00	1.80	.19	3.375	.19	1.625	.144	.50	.40	.50	1.30	.10	.38	3.00	.30	2.60	.80	grams
95.25	50.80	45.72	4.83	85.73	4.83	41.28	3.66	12.70	10.16	12.70	33.02	2.54	9.65	76.20	7.62	66.04	20.32	220.0

a. Suitability within a particular system must be determined by and is solely the responsibility of the customer based on, among other things, electrical performance criteria, stimulus conditions, application, compatibility with other components and environmental conditions and stresses.

CONCLUSION:

- 1) No change in FIT and FORM
- 2) Functional changes as follows:

Parameter	Original Part, ZHL-1724MLN	Replacement Part, ZHL-1724MLN+
Input VSWR	2.5:1 max	1.8:1 max
Output VSWR	2.5:1 max	1.8:1 max
DC Supply Voltage	15V typ	7V min, 15V typ
Supply Current	300mA max	355mA typ, 380mA max

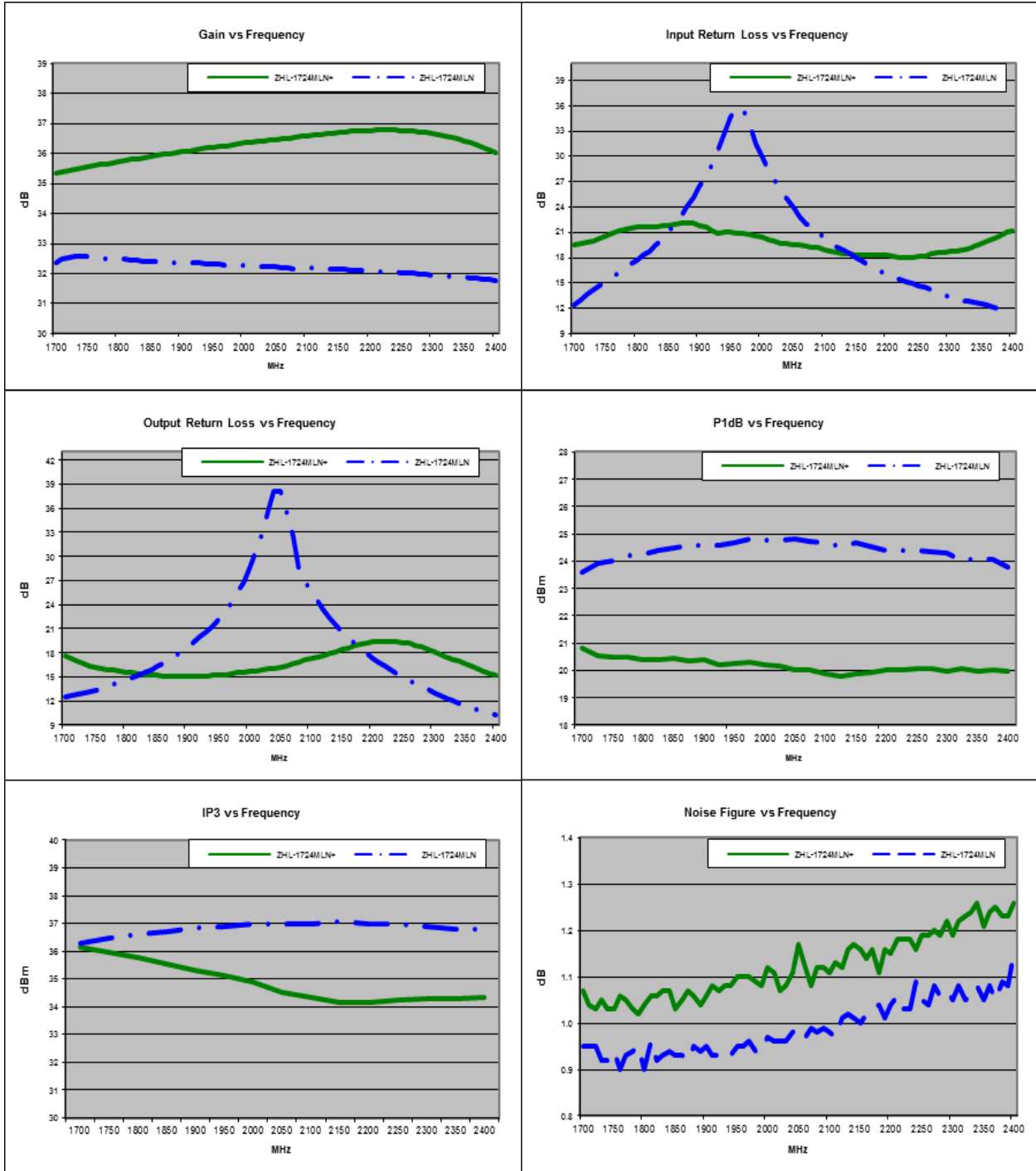
3) TYPICAL PERFORMANCE COMPARISON_a: T_{AMB}=25°C

Parameter	Freq (MHz)	ZHL-1724MLN ORIGINAL PART		ZHL-1724MLN+ REPLACEMENT PART	
		Min	Max	Min	Max
Gain (dB)	1700-2400	31.76	32.57	35.37	36.78
Gain Flatness (dB)	1700-2400	-----	+/-0.40	-----	+/-0.71
Input VSWR (:1)	1700-2400	-----	1.72	-----	1.33
Output VSWR (:1)	1700-2400	-----	1.89	-----	1.60
Pout 1dB (dBm)	1700-2400	23.59	24.80	19.78	20.89
Pout 3dB (dBm)	1700-2400	24.65	25.76	21.26	22.00
OIP3 (dBm)	1700-2400	36.27	37.07	34.17	36.17
Noise Figure (dB)	1700-2400	.90	.99	1.02	1.32
DC Voltage (V)	-----	-----	17	-----	17
Supply Current (A)	-----	-----	0.238	-----	.356

a. Suitability within a particular system must be determined by and is solely the responsibility of the customer based on, among other things, electrical performance criteria, stimulus conditions, application, compatibility with other components and environmental conditions and stresses.

COMPARISON PERFORMANCE CURVES^a: T_{AMB}=25°C

--- ORIGINAL PART
 — REPLACEMENT PART



a. Suitability within a particular system must be determined by and is solely the responsibility of the customer based on, among other things, electrical performance criteria, stimulus conditions, application, compatibility with other components and environmental conditions and stresses.

IMPORTANT NOTICE

© 2015 Mini-Circuits

This document is provided as an accommodation to Mini-Circuits customers in connection with Mini-Circuits parts only. In that regard, this document is for informational and guideline purposes only. Mini-Circuits assumes no responsibility for errors or omissions in this document or for any information contained herein.

Mini-Circuits may change this document or the Mini-Circuits parts referenced herein (collectively, the "Materials") from time to time, without notice. Mini-Circuits makes no commitment to update or correct any of the Materials, and Mini-Circuits shall have no responsibility whatsoever on account of any updates or corrections to the Materials or Mini-Circuits' failure to do so.

Mini-Circuits customers are solely responsible for the products, systems, and applications in which Mini-Circuits parts are incorporated or used. In that regard, customers are responsible for consulting with their own engineers and other appropriate professionals who are familiar with the specific products and systems into which Mini-Circuits' parts are to be incorporated or used so that the proper selection, installation/integration, use and safeguards are made. Accordingly, Mini-Circuits assumes no liability therefor.

In addition, your use of this document and the information contained herein is subject to Mini-Circuits' standard terms of use, which are available at Mini-Circuits' website at www.minicircuits.com/homepage/terms_of_use.html.

Mini-Circuits and the Mini-Circuits logo are registered trademarks of Scientific Components Corporation d/b/a Mini-Circuits. All other third-party trademarks are the property of their respective owners. A reference to any third-party trademark does not constitute or imply any endorsement, affiliation, sponsorship, or recommendation: (i) by Mini-Circuits of such third-party's products, services, processes, or other information; or (ii) by any such third-party of Mini-Circuits or its products, services, processes, or other information.

- a. Suitability within a particular system must be determined by and is solely the responsibility of the customer based on, among other things, electrical performance criteria, stimulus conditions, application, compatibility with other components and environmental conditions and stresses.