

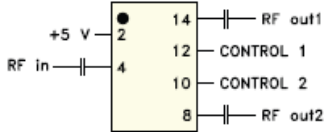
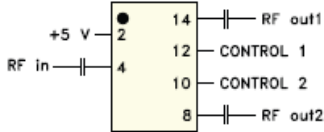


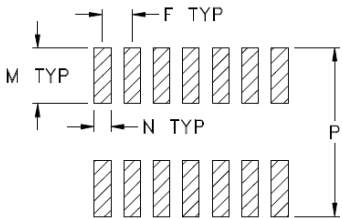
REPLACEMENT PART REFERENCE GUIDE:

AN-80-008

ORIGINAL PART: RSW-2-25P+
 REPLACEMENT PART: RSW-2-25PA+

This replacement part has been judged by Mini-Circuits Engineering as a suitable replacement part for the existing RSW-2-25P+. As a result of die obsolescence of the original design, the re-design effort includes the use of the new die in package mounted on an interface PC board to enable functional replacement while maintaining existing PCB footprint.

APPLICATION CIRCUITS, CASE STYLES & FOOT PRINT

<p>ORIGINAL PART: RSW-2-25P+</p>	<p>REPLACEMENT PART: RSW-2-25PA+</p>															
<p>APPLICATION CIRCUIT</p> 	<p>APPLICATION CIRCUIT-No Change</p> 															
<p>CASE STYLE: CL620 14-Lead Plastic Case</p> 	<p>CASE STYLE: CL620-1 (6 x 8.7x1.8 mm) –PCB Base</p> 															
<p style="text-align: center;">Foot Print</p>  <table border="1" data-bbox="511 1577 1109 1692"> <thead> <tr> <th></th> <th>F</th> <th>M</th> <th>N</th> <th>P</th> </tr> </thead> <tbody> <tr> <td>Inches</td> <td>0.05</td> <td>0.095</td> <td>0.028</td> <td>0.287</td> </tr> <tr> <td>mm</td> <td>1.27</td> <td>2.41</td> <td>0.71</td> <td>7.29</td> </tr> </tbody> </table> <p style="text-align: center;">Suggested Tolerance: ±.002"</p>			F	M	N	P	Inches	0.05	0.095	0.028	0.287	mm	1.27	2.41	0.71	7.29
	F	M	N	P												
Inches	0.05	0.095	0.028	0.287												
mm	1.27	2.41	0.71	7.29												

CONCLUSION:

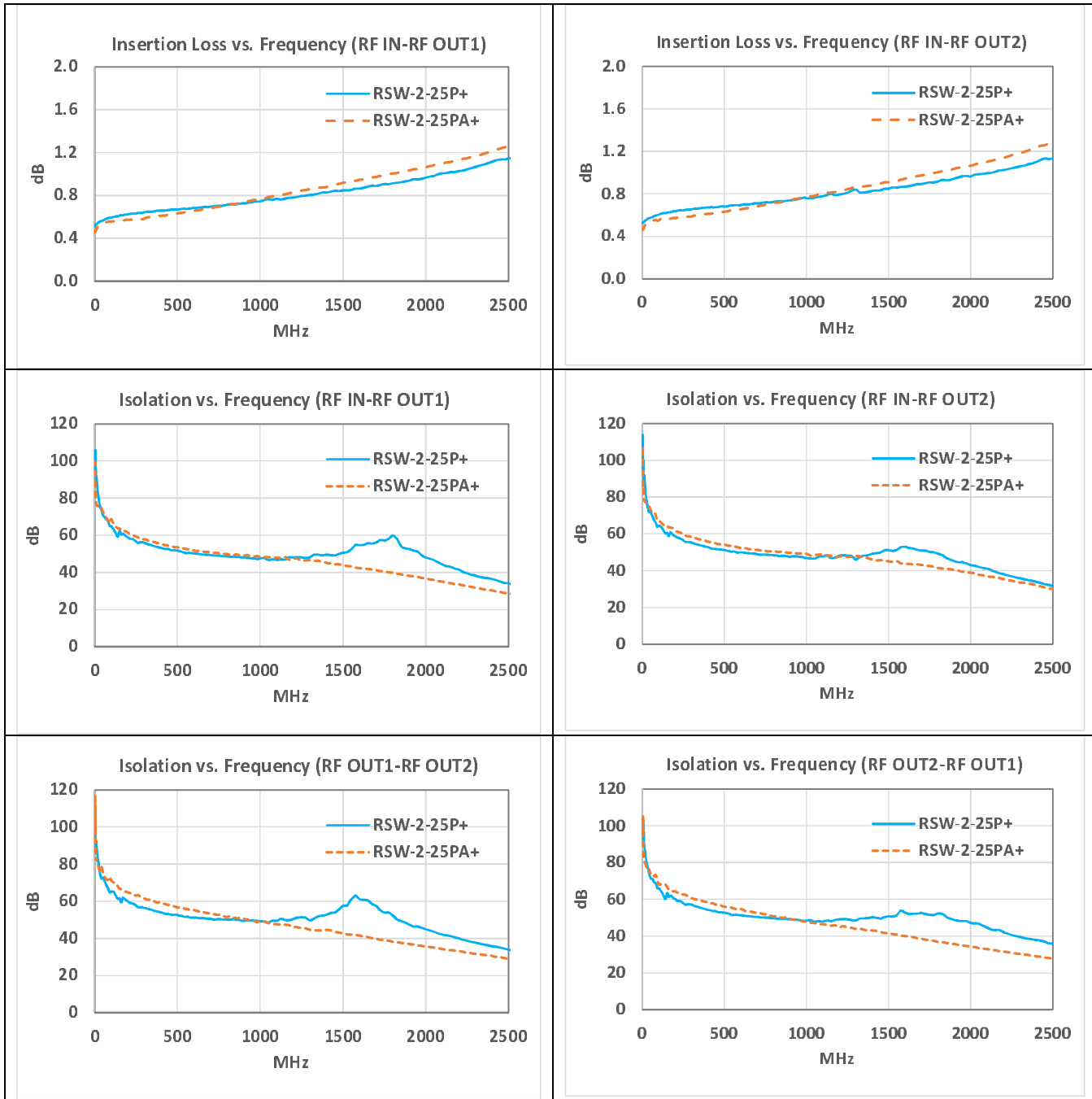
- 1) **FORM-FIT-FUNCTIONAL COMPATIBLE:** Similar Circuit and PCB Layout.
- 2) **TYPICAL PERFORMANCE COMPARISON** _a:

	Condition (MHz)	RSW-2-25PA+	RSW-2-25P+
		Average	Average
Insertion Loss (dB)	1 to 100	0.5	0.6
	100 to 1000	0.6	0.7
	1000 to 2000	0.9	0.9
	2000 to 2500	1.1	1.0
Isolation RF-IN to RF-OUT (dB)	1 to 100	80	84
	100 to 1000	54	52
	1000 to 2000	44	50
	2000 to 2500	34	39
Isolation RF-OUT to RF-OUT (dB)	1 to 100	83	85
	100 to 1000	57	53
	1000 to 2000	42	51
	2000 to 2500	32	40
Return Loss RF-IN (dB)	1 to 100	27	25
	100 to 1000	24	25
	1000 to 2000	17	20
	2000 to 2500	15	15
Return Loss RF-OUT (ON) (dB)	1 to 100	27	26
	100 to 1000	25	27
	1000 to 2000	18	22
	2000 to 2500	17	16
Return Loss RF-OUT (OFF) (dB)	1 to 100	2.5	0.0
	100 to 1000	3.4	0.1
	1000 to 2000	3.7	0.4
	2000 to 2500	3.8	0.6
Switching Time (ns)	Rise/Fall Time	3	12
	ON/OFF Time	14	29

Notes:

- a. Suitability for model replacement within a particular system must be determined by and is solely the responsibility of the customer based on, among other things, electrical performance criteria, stimulus conditions, application, compatibility with other components and environmental conditions and stresses.

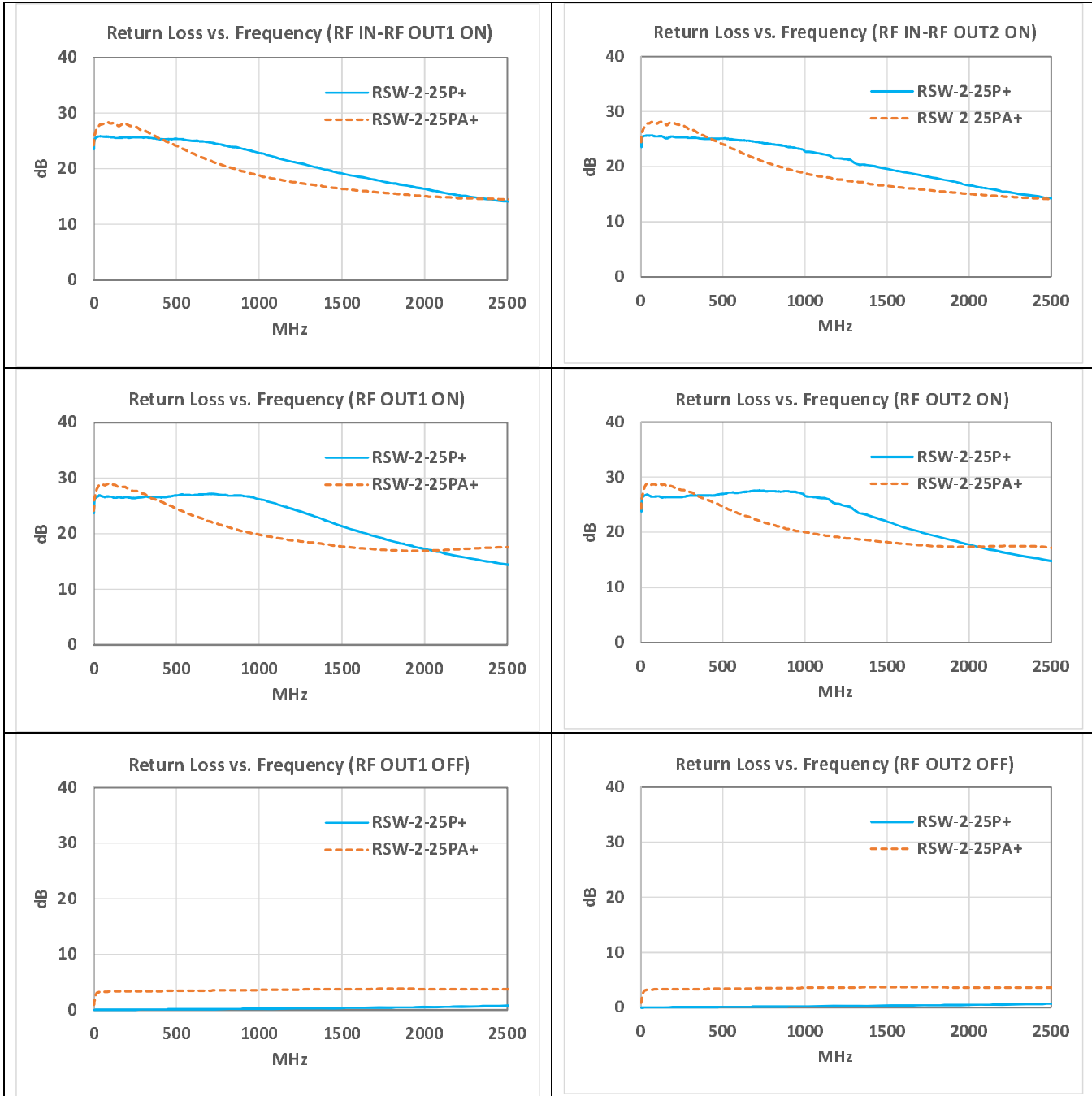
COMPARISON PERFORMANCE CURVES^a:



Notes:

- a. Suitability for model replacement within a particular system must be determined by and is solely the responsibility of the customer based on, among other things, electrical performance criteria, stimulus conditions, application, compatibility with other components and environmental conditions and stresses.

COMPARISON PERFORMANCE CURVES^a (Continued):



Notes:

- a. Suitability for model replacement within a particular system must be determined by and is solely the responsibility of the customer based on, among other things, electrical performance criteria, stimulus conditions, application, compatibility with other components and environmental conditions and stresses.

IMPORTANT NOTICE

© 2015 Mini-Circuits

This document is provided as an accommodation to Mini-Circuits customers in connection with Mini-Circuits parts only. In that regard, this document is for informational and guideline purposes only. Mini-Circuits assumes no responsibility for errors or omissions in this document or for any information contained herein.

Mini-Circuits may change this document or the Mini-Circuits parts referenced herein (collectively, the "Materials") from time to time, without notice. Mini-Circuits makes no commitment to update or correct any of the Materials, and Mini-Circuits shall have no responsibility whatsoever on account of any updates or corrections to the Materials or Mini-Circuits' failure to do so.

Mini-Circuits customers are solely responsible for the products, systems, and applications in which Mini-Circuits parts are incorporated or used. In that regard, customers are responsible for consulting with their own engineers and other appropriate professionals who are familiar with the specific products and systems into which Mini-Circuits' parts are to be incorporated or used so that the proper selection, installation/integration, use and safeguards are made. Accordingly, Mini-Circuits assumes no liability therefor.

In addition, your use of this document and the information contained herein is subject to Mini-Circuits' standard terms of use, which are available at Mini-Circuits' website at www.minicircuits.com/homepage/terms_of_use.html.

Mini-Circuits and the Mini-Circuits logo are registered trademarks of Scientific Components Corporation d/b/a Mini-Circuits. All other third-party trademarks are the property of their respective owners. A reference to any third-party trademark does not constitute or imply any endorsement, affiliation, sponsorship, or recommendation: (i) by Mini-Circuits of such third-party's products, services, processes, or other information; or (ii) by any such third-party of Mini-Circuits or its products, services, processes, or other information.