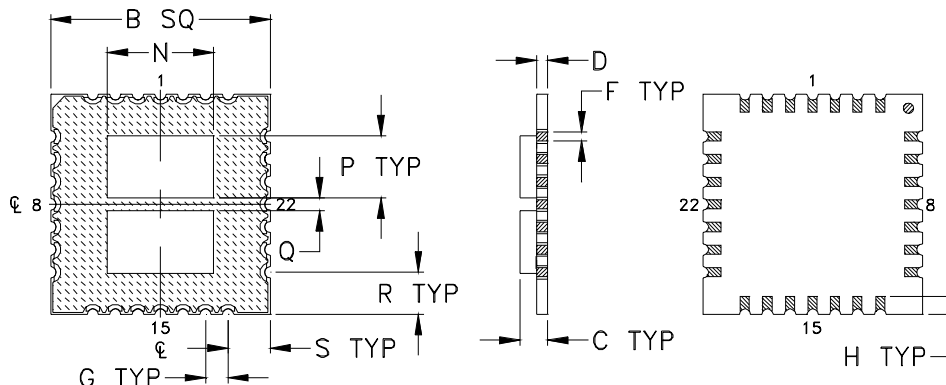
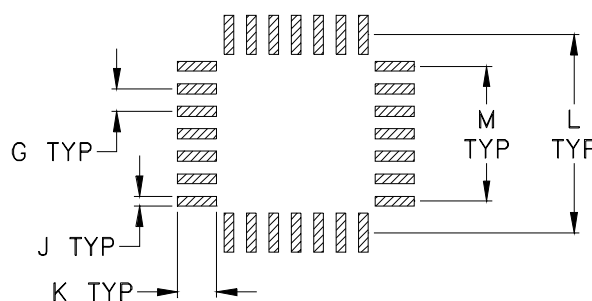


Outline Dimensions



PCB Land Pattern



Suggested Layout,
Tolerance to be within $\pm .002$

CASE#	A	B	C	D	E	F	G	H	J	K	L	M	N
AN1102	--	.487 (12.37)	.06 (1.55)	.025 (0.64)	--	.020 (0.51)	.050 (1.27)	.040 (1.02)	.022 (0.56)	.087 (2.21)	.441 (11.20)	.300 (7.62)	.236 (5.99)

CASE#	P	Q	R	S	WT. GRAM
AN1102	.138 (3.51)	.03 (0.76)	.094 (2.39)	.094 (2.39)	.71

Dimensions are in inches (mm). Tolerances: 2 Pl. $\pm .01$; 3 Pl. $\pm .005$

Notes:

- Case material: Plastic.
- Termination finish:
For RoHS Case Styles: Tin plate. All models, (+) suffix.
For RoHS-5 Case Styles: Tin-Lead plate. All models, no (+) suffix.



INTERNET <http://www.minicircuits.com>

P.O. Box 350166, Brooklyn, New York 11235-0003 (718) 934-4500 Fax (718) 332-4661

Distribution Centers NORTH AMERICA 800-654-7949 • 417-335-5935 • Fax 417-335-5945 • EUROPE 44-1252-832600 • Fax 44-1252-837010

Mini-Circuits ISO 9001 & ISO 14001 Certified