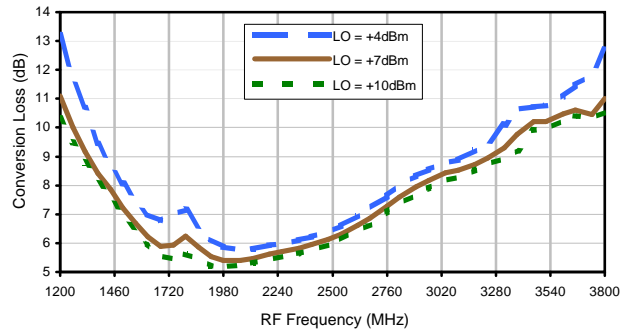
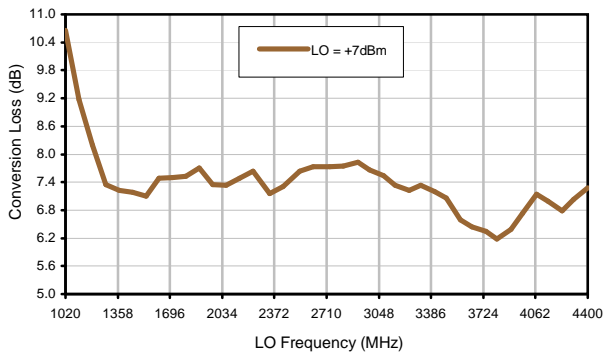


Typical Performance Curves

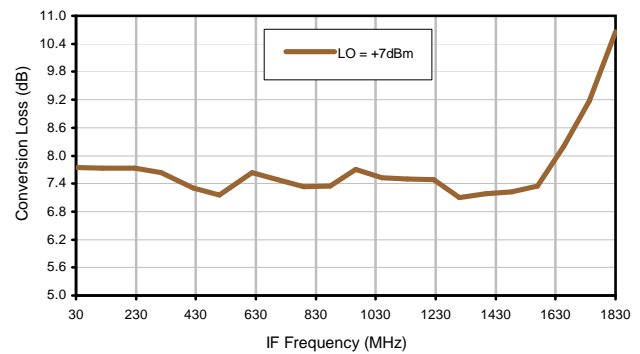
Conversion Loss @ IF=30 MHz



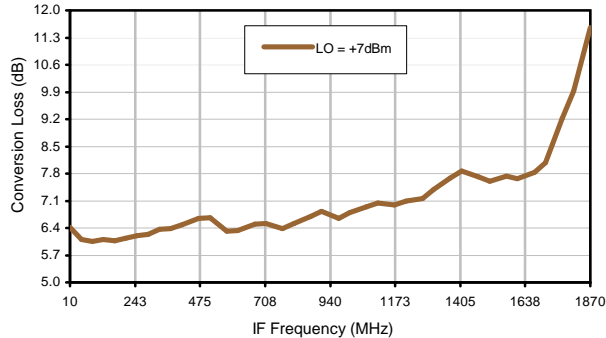
Conversion Loss vs. LO @ RF=2850MHz



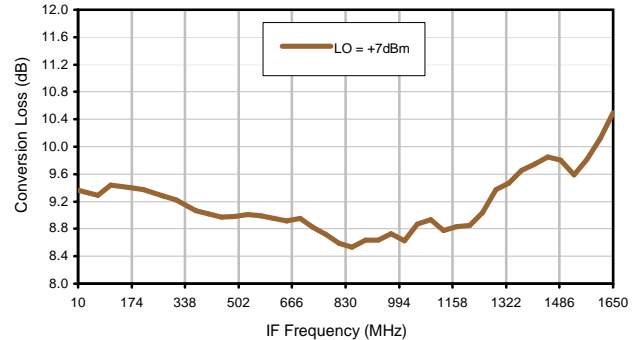
Conversion Loss vs. IF @ RF=2850MHz



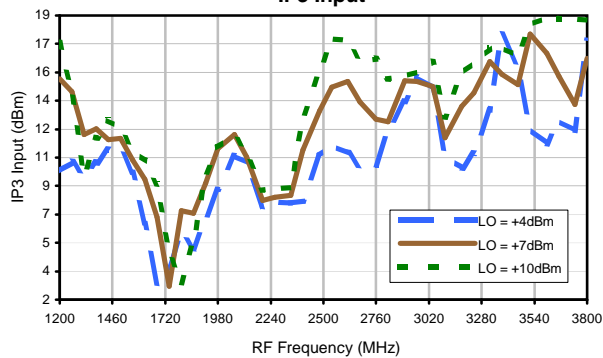
Conversion Loss vs. IF @ RF=2489.89MHz



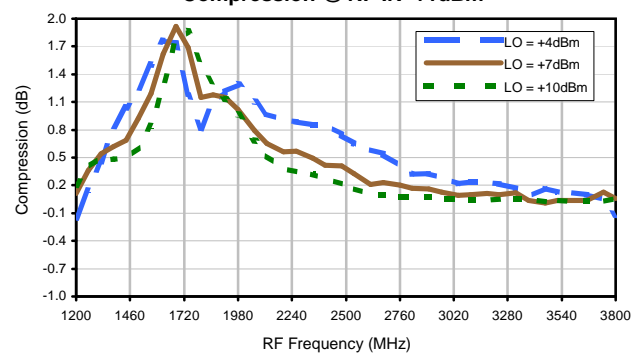
Conversion Loss vs. IF @ RF=3210.10MHz



IP3 Input

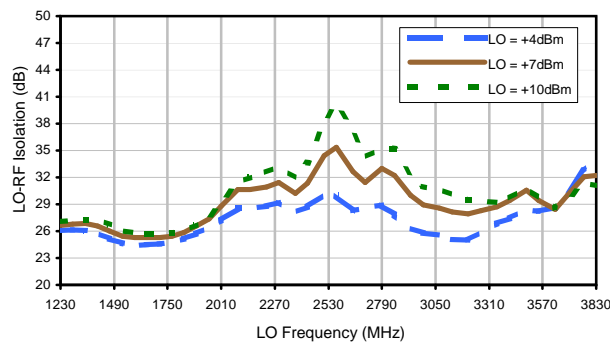


Compression @ RF IN=+1dBm

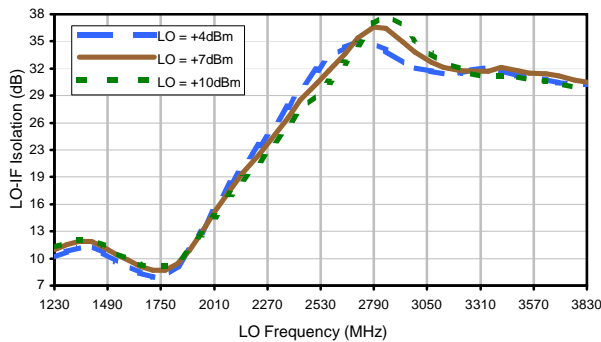


Typical Performance Curves

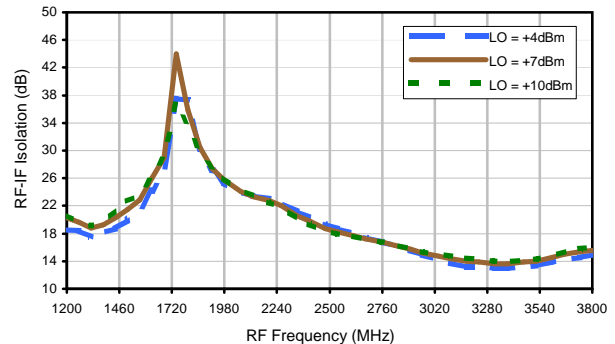
LO-RF Isolation



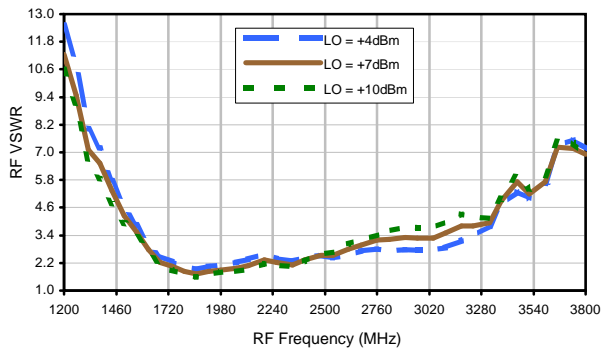
LO-IF Isolation



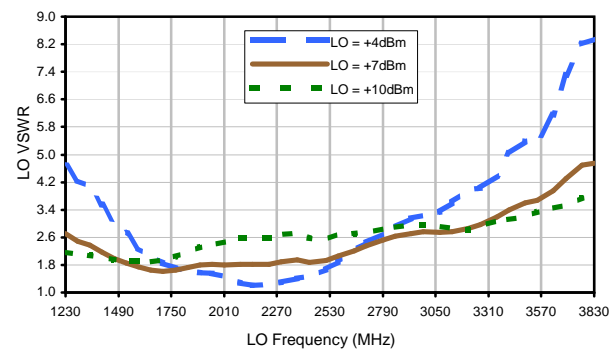
RF-IF Isolation



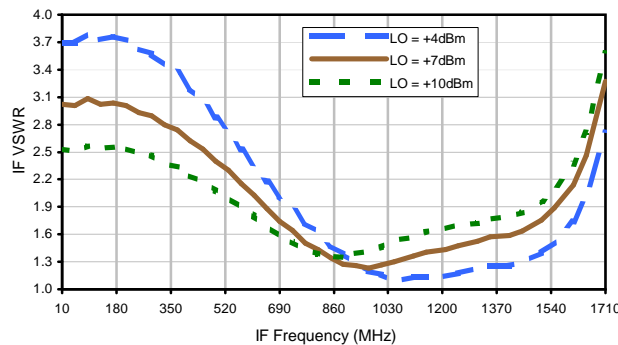
RF VSWR



LO VSWR



IF VSWR



Harmonics Tables

RF HARMONICS ORDER

	(-dBm)	(-dBc)										
0	-	-	8	3	9	13	17	25	29	41	---	---
1	-	8	+0	30	16	37	29	36	34	44	47	---
2	>90	50	64	49	66	54	58	51	60	56	66	66
3	>90	>68	>68	>68	67	>68	>68	>68	68	>68	>68	>68
4	>90	>68	>68	>68	>68	>68	>68	>68	>68	>68	>68	>68
5	>90	>68	>68	>68	>68	>68	>68	>68	>68	>68	>68	>68
6	>90	>68	>68	>68	>68	>68	>68	>68	>68	>68	>68	>68
7	>90	>68	>68	>68	>68	>68	>68	>68	>68	>68	>68	>68
8	>90	>68	>68	>68	>68	>68	>68	>68	>68	>68	>68	>68
9	---	---	>68	>68	>68	>68	>68	>68	>68	>68	>68	>68
10	---	---	---	>68	>68	>68	>68	>68	>68	>68	>68	>68
	RF CAL	0	1	2	3	4	5	6	7	8	9	10

LO HARMONICS ORDER

Test conditions: RF IN: 2850 MHz; -14.00 dBm.
 LO IN: 2880 MHz; +7.00 dBm
 IF OUT: 30 MHz; -21.83 dBm

RF HARMONICS ORDER

	(-dBm)	(-dBc)										
0	-	-	18	13	20	26	29	35	41	59	---	---
1	-	8	+0	31	16	39	30	37	36	48	52	---
2	72	39	53	40	59	44	48	43	51	50	67	63
3	>90	65	53	60	46	59	50	63	50	62	56	63
4	>90	66	>78	76	>78	64	71	71	>78	63	70	63
5	>90	>78	77	>78	>78	>78	>78	>78	>78	>78	70	>78
6	>90	>78	>78	>78	>78	>78	>78	>78	>78	>78	>78	>78
7	>90	>78	>78	>78	>78	>78	>78	>78	>78	>78	>78	>78
8	>90	>78	>78	>78	>78	>78	>78	>78	>78	>78	>78	>78
9	---	---	>78	>78	>78	>78	>78	>78	>78	>78	>78	>78
10	---	---	---	>78	>78	>78	>78	>78	>78	>78	>78	>78
	RF CAL	0	1	2	3	4	5	6	7	8	9	10

LO HARMONICS ORDER

Test conditions: RF IN: 2850 MHz; -4.00 dBm.
 LO IN: 2880 MHz; +7.00 dBm
 IF OUT: 30 MHz; -11.84 dBm

- Notes: 1. All Harmonics are in (dBc) relative to IF OUTPUT.
 2. + entry denotes harmonics are in (dBc) above IF OUTPUT.
 3. RF Cal represent the Harmonics level of the RF input signal to the mixer.

REV. X3
 ADE-32
 101013
 Page 3 of 3



IF/RF MICROWAVE COMPONENTS • ISO 9001 ISO 14001 AS 9100 CERTIFIED RoHS compliant
 P.O. Box 350186, Brooklyn, New York 11235-0008 (718) 934-4500 Fax (718) 332-4661



The Design Engineers Search Engine finds the model you need, Instantly • For detailed performance specs & shopping online see

