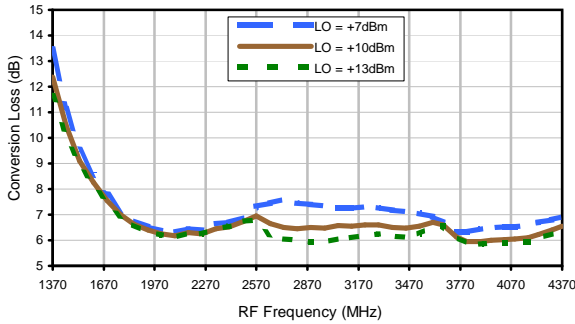


Frequency Mixer

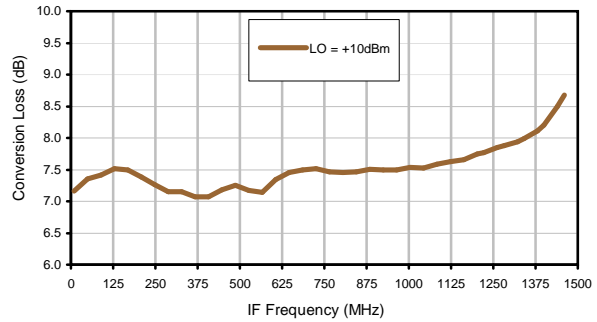
ADE-R35LH+

Typical Performance Curves

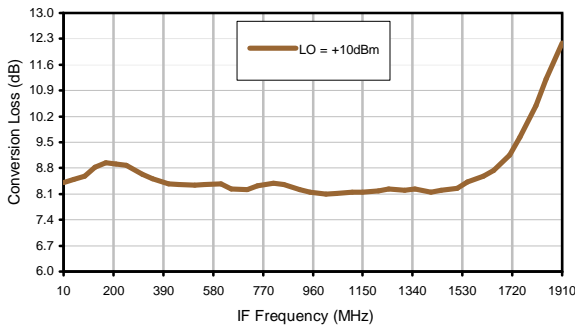
Conversion Loss @ IF=30 MHz



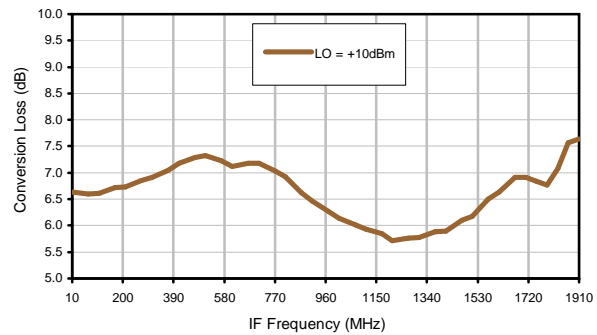
Conversion Loss vs. IF @ RF=1739.9 MHz



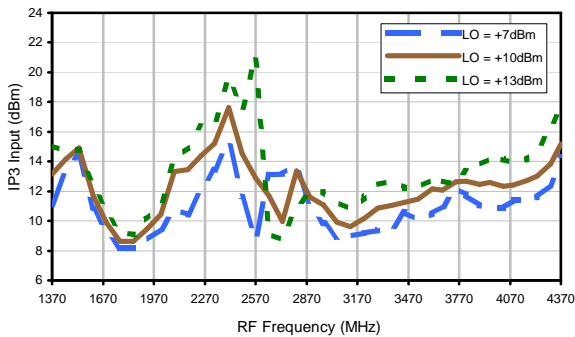
Conversion Loss vs. IF @ RF=1589.9 MHz



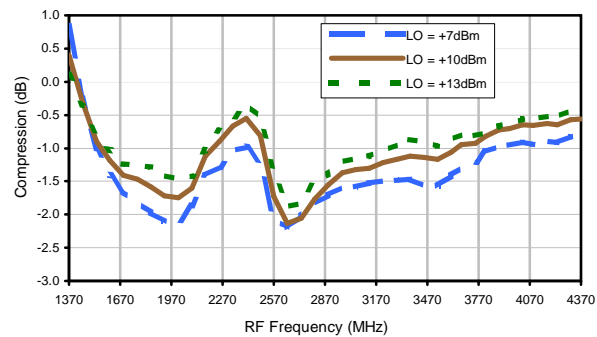
Conversion Loss vs. IF @ RF=3510.1 MHz



IP3 Input



Compression @ RF IN = +5 dBm



REV. X2
ADE-R35LH+
101013
Page 1 of 3



IF/RF MICROWAVE COMPONENTS • ISO 9001 ISO 14001 AS 9100 CERTIFIED • RoHS compliant
P.O. Box 350166, Brooklyn, New York 11235-0003 (718) 934-4500 Fax (718) 332-4661

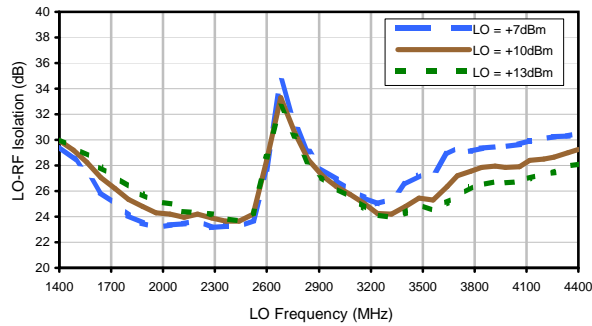


The Design Engineers Search Engine finds the model you need, Instantly • For detailed performance specs & shopping online see

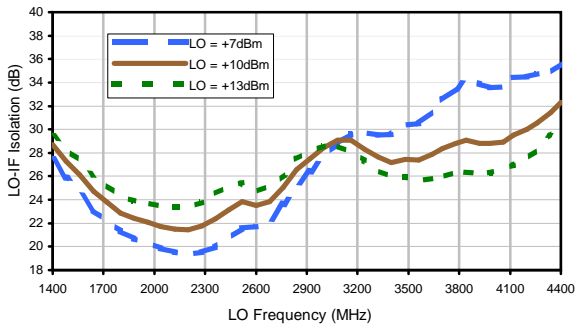


Typical Performance Curves

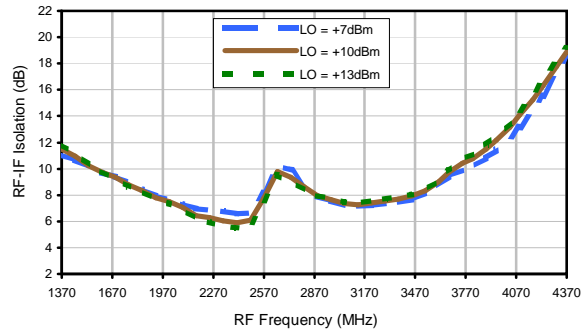
LO-RF Isolation



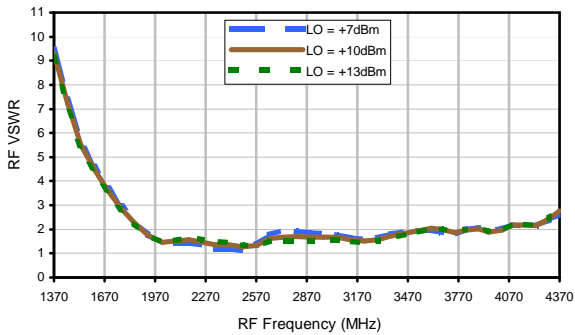
LO-IF Isolation



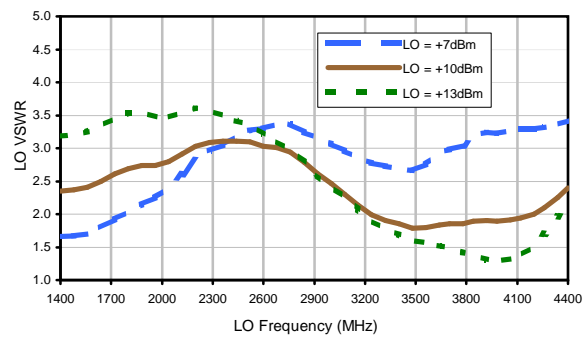
RF-IF Isolation



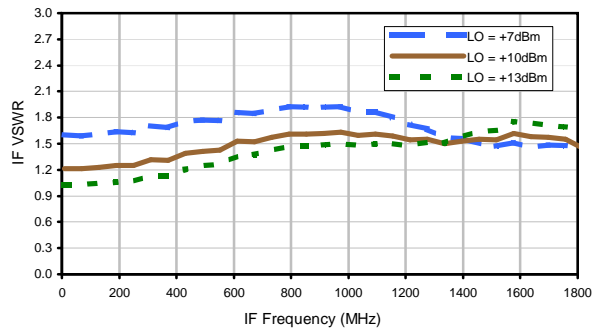
RF VSWR



LO VSWR



IF VSWR



Harmonics Tables

RF HARMONICS ORDER

	(-dBm)	(-dBc)										
0	-	-	+3	15	2	23	20	48	31	38	---	---
1	-	3	+0	17	34	33	38	43	57	52	48	---
2	82	45	36	37	41	54	52	45	61	71	61	61
3	> 90	65	72	62	53	59	69	68	70	65	> 73	> 73
4	> 90	> 73	> 73	> 73	> 73	61	> 73	> 73	> 73	> 73	> 73	> 73
5	> 90	> 73	> 73	> 73	> 73	> 73	> 73	> 73	> 73	> 73	> 73	> 73
6	> 90	> 73	> 73	> 73	> 73	> 73	> 73	> 73	> 73	> 73	> 73	> 73
7	> 90	> 73	> 73	> 73	> 73	> 73	> 73	> 73	> 73	> 73	> 73	> 73
8	> 90	> 73	> 73	> 73	> 73	> 73	> 73	> 73	> 73	> 73	> 73	> 73
9	> 90	> 73	> 73	> 73	> 73	> 73	> 73	> 73	> 73	> 73	> 73	> 73
10	---	---	> 73	> 73	> 73	> 73	> 73	> 73	> 73	> 73	> 73	> 73
	RF CAL	0	1	2	3	4	5	6	7	8	9	10

LO HARMONICS ORDER

Test conditions: RF IN: 2650.00 MHz; -10.00 dBm.
 LO IN: 2680.00 MHz; +10.00 dBm
 IF OUT: 30.00 MHz; -16.75 dBm

RF HARMONICS ORDER

	(-dBm)	(-dBc)										
0	-	-	8	28	13	36	36	60	46	66	---	---
1	-	2	+0	19	37	38	42	51	66	60	54	---
2	63	42	30	33	34	46	38	45	60	71	59	64
3	> 90	38	52	35	40	47	63	51	54	58	79	70
4	> 90	50	52	54	50	48	51	70	62	52	61	80
5	> 90	68	62	55	67	66	53	61	66	74	65	66
6	> 90	80	71	59	65	67	60	55	66	80	64	74
7	> 90	73	81	81	69	78	78	72	59	78	83	77
8	> 90	> 83	76	> 83	> 83	70	> 83	> 83	71	64	72	> 83
9	> 90	> 83	> 83	81	> 83	> 83	79	81	80	73	71	81
10	---	---	> 83	> 83	> 83	> 83	> 83	> 83	> 83	> 83	76	73
	RF CAL	0	1	2	3	4	5	6	7	8	9	10

LO HARMONICS ORDER

Test conditions: RF IN: 2650.00 MHz; .00 dBm.
 LO IN: 2680.00 MHz; +10.00 dBm
 IF OUT: 30. MHz; -6.97 dBm

- Notes: 1. All Harmonics are in (dBc) relative to IF OUTPUT.
 2. + entry denotes harmonics are in (dBc) above IF OUTPUT.
 3. RF Cal represent the Harmonics level of the RF input signal to the mixer.