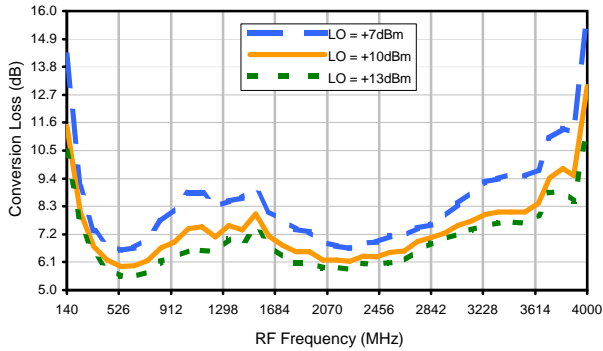
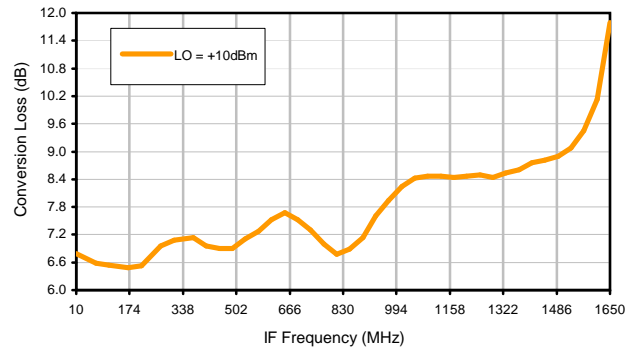


Typical Performance Curves

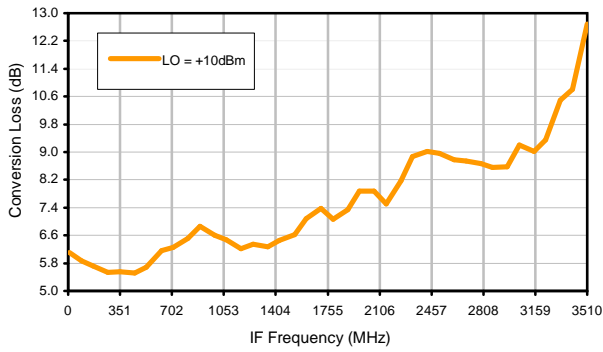
Conversion Loss @ IF=30MHz



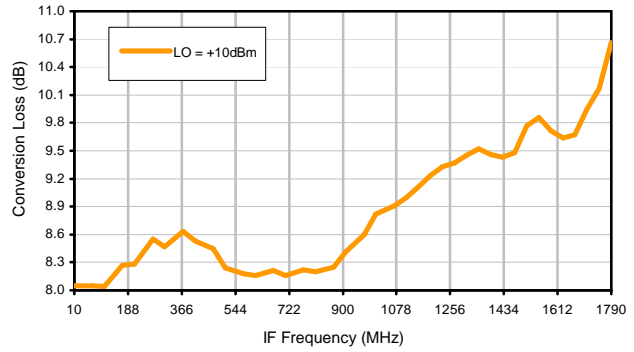
Conversion Loss vs. IF @ RF=1760.1MHz



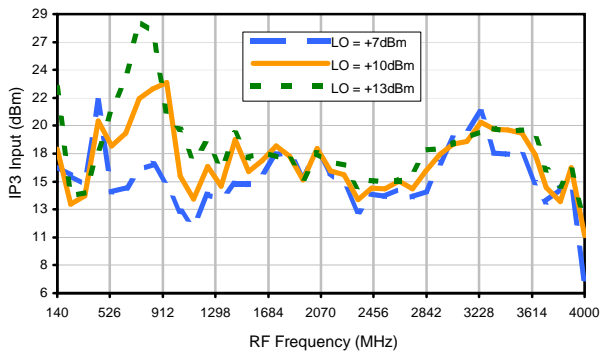
Conversion Loss vs. IF @ RF=489.9MHz



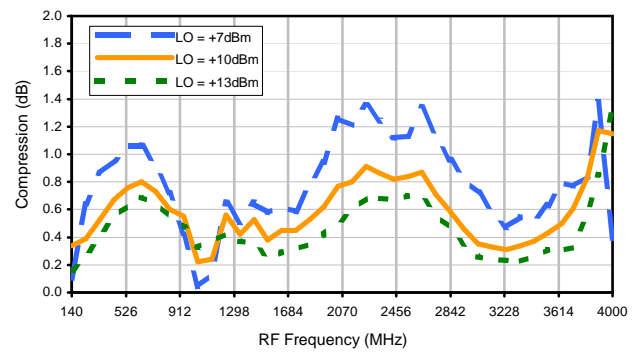
Conversion Loss vs. IF @ RF=3510.1MHz



IP3 Input

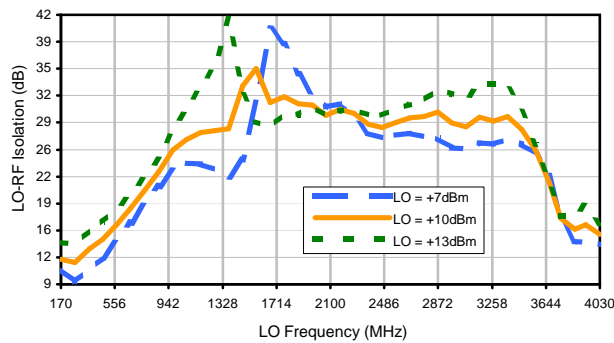


Compression @ RF IN=+6dBm

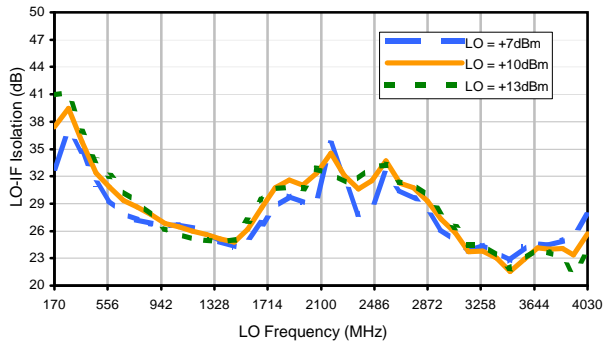


Typical Performance Curves

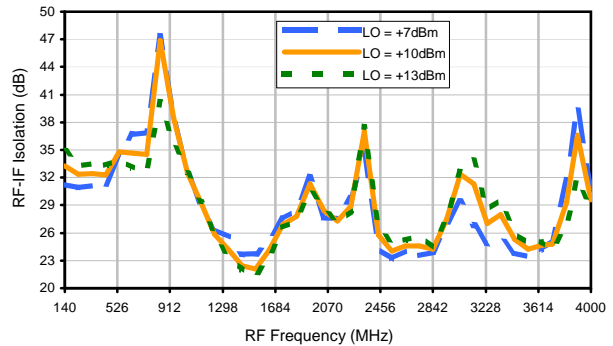
LO-RF Isolation



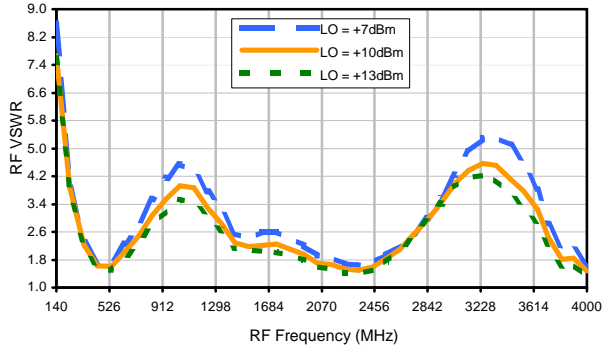
LO-IF Isolation



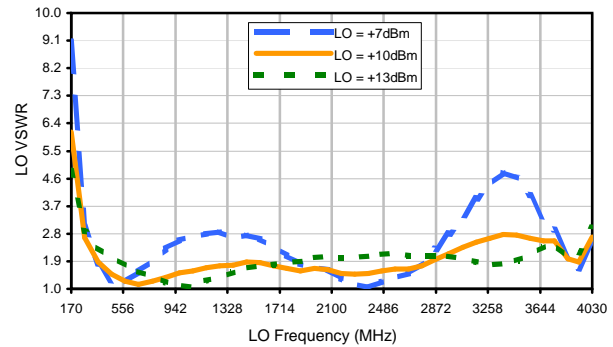
RF-IF Isolation



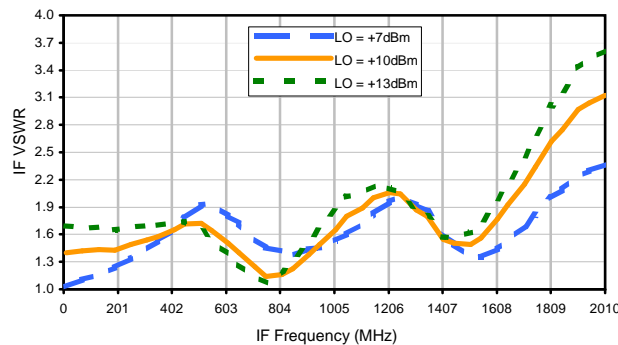
RF VSWR



LO VSWR



IF VSWR



Harmonics Tables

RF HARMONICS ORDER

	(-dBm)	(-dBc)										
0	-	-	6	16	8	26	14	32	33	51	53	53
1	-	26	+0	32	14	38	33	39	50	52	60	53
2	76	51	56	53	57	56	49	62	53	66	62	74
3	>90	65	63	65	63	72	69	74	72	>75	>75	>75
4	>90	>75	>75	>75	>75	>75	>75	>75	>75	>75	>75	>75
5	>90	>75	>75	>75	>75	>75	>75	>75	>75	>75	>75	>75
6	>90	>75	>75	>75	>75	>75	>75	>75	>75	>75	>75	>75
7	>90	>75	>75	>75	>75	>75	>75	>75	>75	>75	>75	>75
8	>90	>75	>75	>75	>75	>75	>75	>75	>75	>75	>75	>75
9	>90	>75	>75	>75	>75	>75	>75	>75	>75	>75	>75	>75
10	>90	>75	>75	>75	>75	>75	>75	>75	>75	>75	>75	>75
	RF CAL	0	1	2	3	4	5	6	7	8	9	10

Test conditions: RF IN: 2000 MHz; -9.00 dBm.
 LO IN: 2030 MHz; +10.00 dBm
 IF OUT: 30 MHz; -15.42 dBm

RF HARMONICS ORDER

	(-dBm)	(-dBc)										
0	-	-	16	24	20	39	26	46	47	62	64	67
1	-	25	+0	31	14	43	33	44	50	60	65	59
2	56	42	46	42	42	48	41	58	44	58	57	80
3	>90	46	44	45	41	52	45	69	55	65	69	67
4	>90	63	62	71	66	71	69	67	63	74	64	75
5	>90	71	70	64	67	66	63	78	66	73	69	>84
6	>90	>84	82	79	77	82	78	77	77	>84	74	81
7	>90	>84	>84	>84	>84	77	82	83	78	83	79	83
8	>90	>84	>84	>84	>84	>84	>84	>84	>84	>84	84	>84
9	>90	>84	>84	>84	>84	>84	>84	>84	>84	>84	>84	>84
10	>90	>84	>84	>84	>84	>84	>84	>84	>84	>84	>84	>84
	RF CAL	0	1	2	3	4	5	6	7	8	9	10

LO HARMONICS ORDER

Test conditions: RF IN: 2000 MHz; 1.00 dBm.
 LO IN: 2030 MHz; +10.00 dBm
 IF OUT: 30 MHz; -5.51 dBm

- Notes: 1. All Harmonics are in (dBc) relative to IF OUTPUT.
 2. + entry denotes harmonics are in (dBc) above IF OUTPUT.
 3. RF Cal represent the Harmonics level of the RF input signal to the mixer.