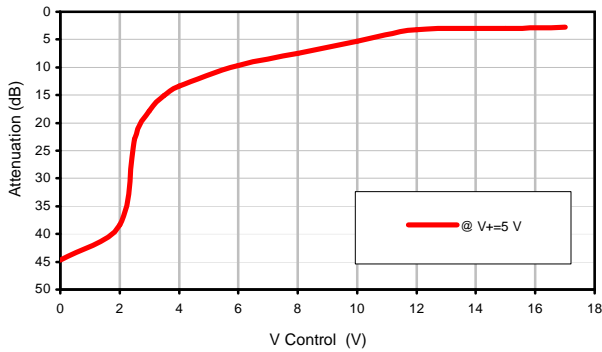


# Voltage Variable Attenuator

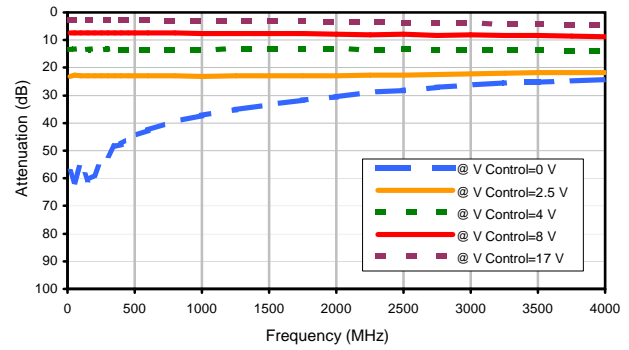
## Typical Performance Curves

# RVA-3000+

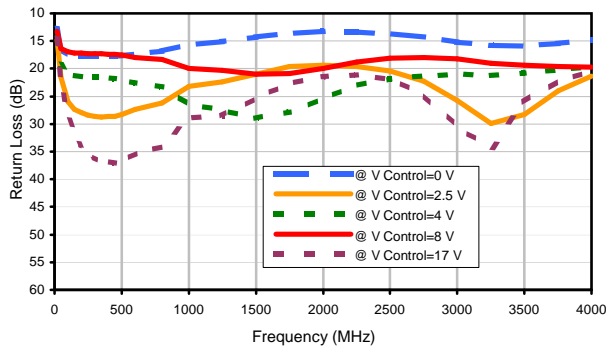
Attenuation @ 500 MHz



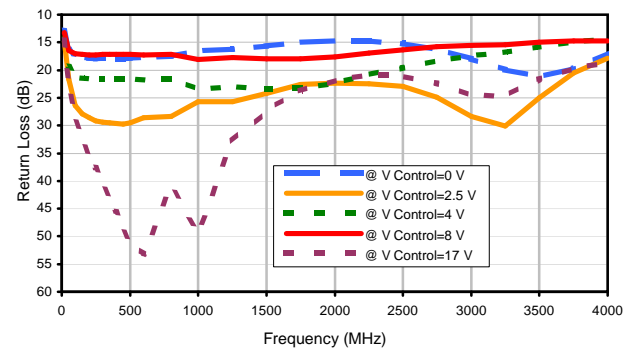
Attenuation @ V+=5 V



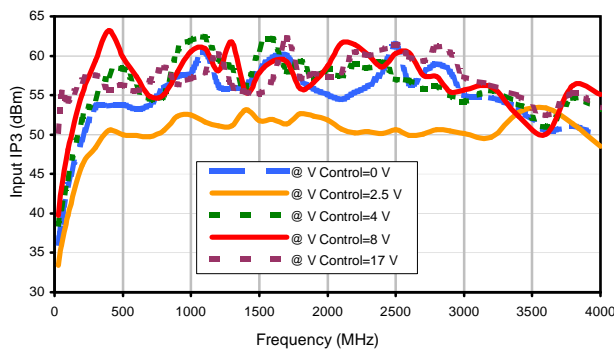
Input Return Loss @ V+=5 V



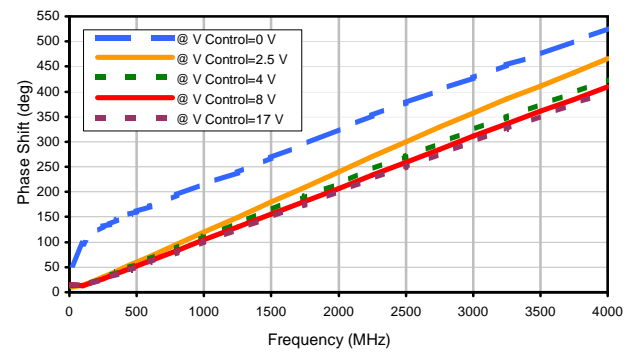
Output Return Loss @ V+=5 V



Input IP3 @ V+=5 V



Phase Shift @ V+=5 V



REV. X1  
RVA-3000+  
070329  
Page 1 of 1

**Mini-Circuits®**

IF/RF MICROWAVE COMPONENTS • ISO 9001 ISO 14001 AS 9100 CERTIFIED RoHS compliant  
P.O. Box 350166, Brooklyn, New York 11235-0003 (718) 934-4500 Fax (718) 332-4661



The Design Engineers Search Engine finds the model you need, Instantly • For detailed performance specs & shopping online see [minicircuits.com](http://minicircuits.com)