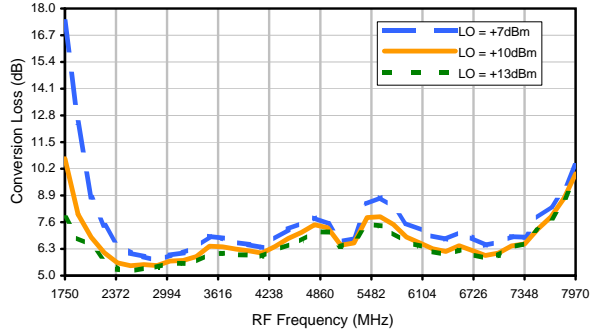


Frequency Mixer

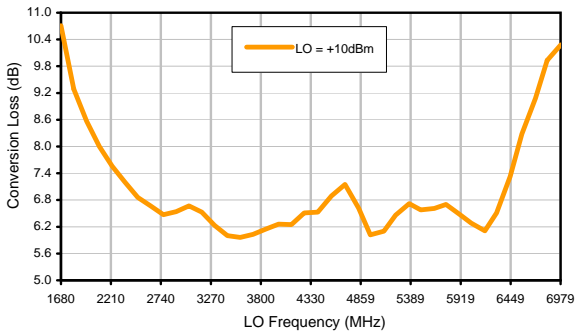
SKY-60LH+

Typical Performance Curves

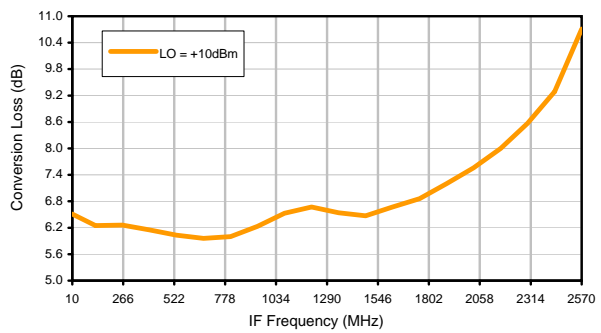
Conversion Loss @ IF=30MHz



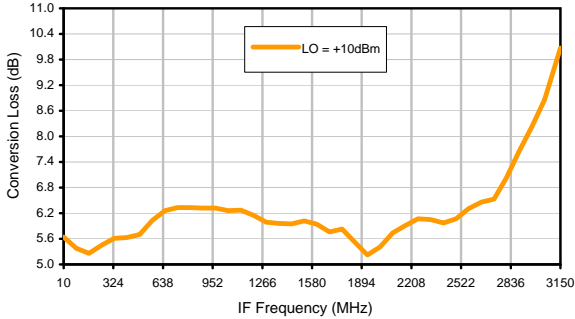
Conversion Loss vs. LO @ RF=4250MHz



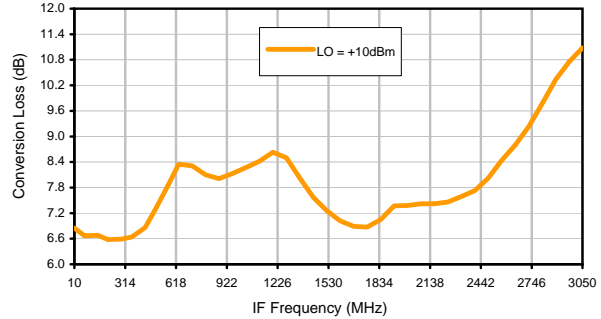
Conversion Loss vs. IF @ RF=4250MHz



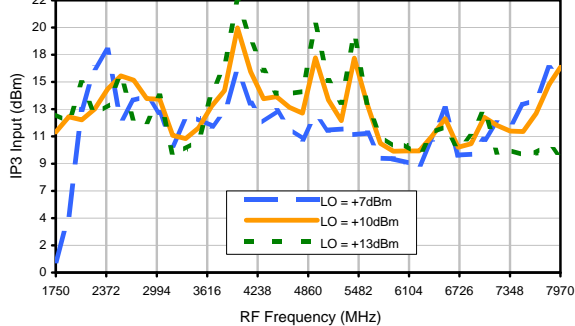
Conversion Loss vs. IF @ RF=2489.89MHz



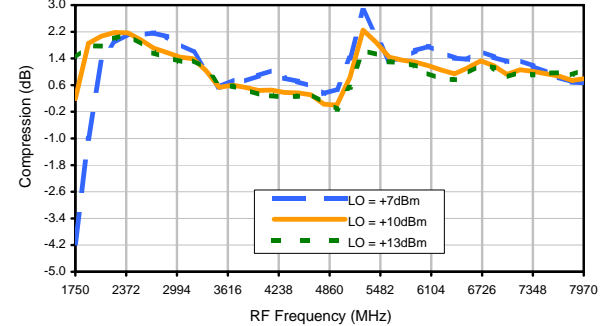
Conversion Loss vs. IF @ RF=6010.1MHz



IP3 Input



Compression @ RF IN=+5dBm

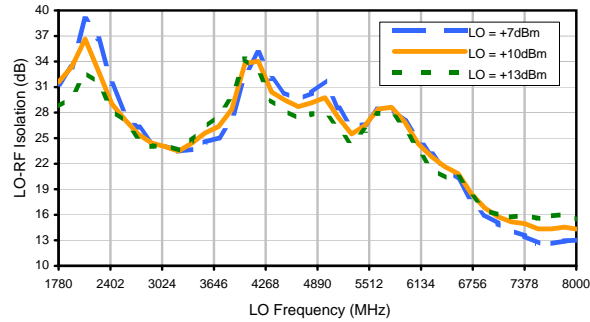


Frequency Mixer

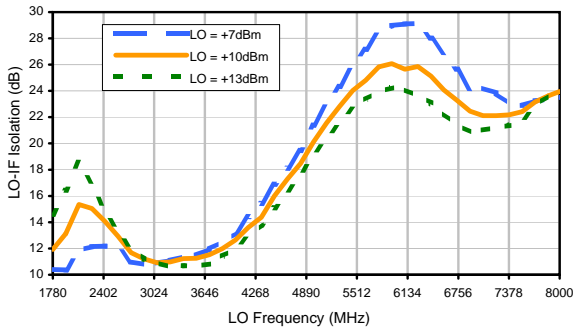
Typical Performance Curves

SKY-60LH+

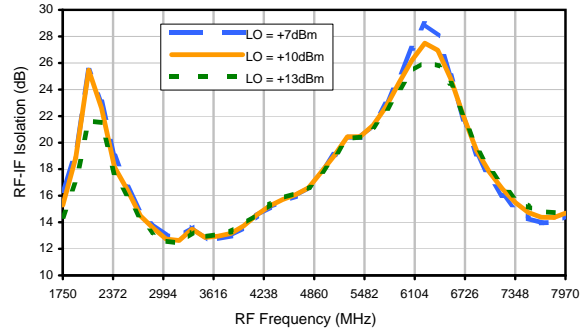
LO-RF Isolation



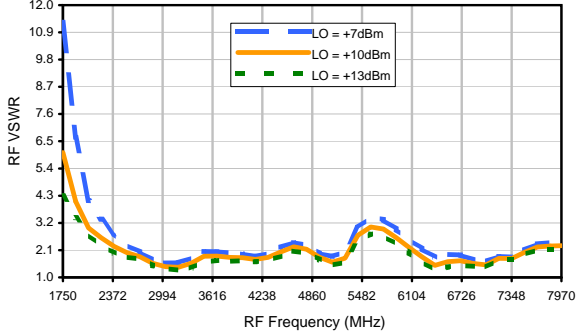
LO-IF Isolation



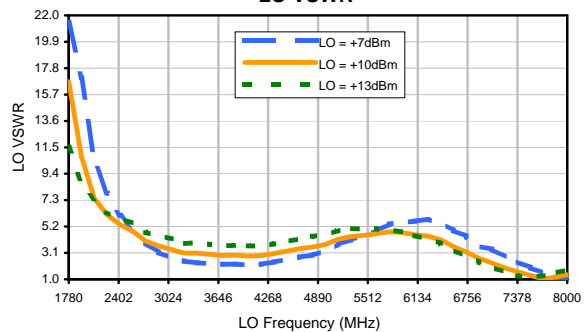
RF-IF Isolation



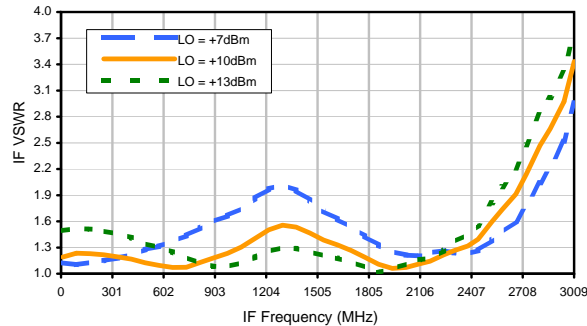
RF VSWR



LO VSWR



IF VSWR



Frequency Mixer

Harmonics Tables

SKY-60LH+

RF HARMONICS ORDER

	(-dBm)	(-dBc)										
0	-	-	+12	16	15	35	17	---	---	---	---	---
1	-	9	+0	34	31	26	36	48	---	---	---	---
2	87	52	60	52	60	58	64	46	52	---	---	---
3	>90	71	>73	70	60	68	70	65	64	>73	---	---
4	>90	>73	>73	>73	>73	>73	>73	>73	>73	>73	>73	---
5	>90	>73	>73	>73	>73	>73	>73	>73	>73	>73	>73	>73
6	---	---	>73	>73	>73	>73	>73	>73	>73	>73	>73	>73
7	---	---	---	>73	>73	>73	>73	>73	>73	>73	>73	>73
8	---	---	---	---	>73	>73	>73	>73	>73	>73	>73	>73
9	---	---	---	---	---	>73	>73	>73	>73	>73	>73	>73
10	---	---	---	---	---	---	>73	>73	>73	>73	>73	>73
	RF CAL	0	1	2	3	4	5	6	7	8	9	10

Test conditions: RF IN: 4250 MHz; -10.00 dBm.
 LO IN: 4280 MHz; +10.00 dBm
 IF OUT: 30 MHz; -16.58 dBm

RF HARMONICS ORDER

	(-dBm)	(-dBc)										
0	-	-	+2	26	28	51	33	---	---	---	---	---
1	-	9	+0	36	31	28	38	49	---	---	---	---
2	67	42	50	41	54	54	62	43	48	---	---	---
3	>90	55	56	51	44	50	58	47	51	71	---	---
4	>90	56	68	73	67	61	59	73	67	56	68	---
5	>90	75	75	69	74	66	55	69	67	78	68	69
6	---	---	79	76	81	>83	78	71	72	>83	>83	72
7	---	---	---	>83	>83	>83	>83	>83	70	>83	80	>83
8	---	---	---	---	>83	>83	>83	>83	>83	>83	>83	>83
9	---	---	---	---	---	>83	>83	>83	>83	>83	>83	>83
10	---	---	---	---	---	---	>83	>83	>83	>83	>83	>83
	RF CAL	0	1	2	3	4	5	6	7	8	9	10

LO HARMONICS ORDER

Test conditions: RF IN: 4250 MHz; 0.00 dBm.
 LO IN: 4280 MHz; +10.00 dBm
 IF OUT: 30 MHz; -6.69 dBm

- Notes: 1. All Harmonics are in (dBc) relative to IF OUTPUT.
 2. + entry denotes harmonics are in (dBc) above IF OUTPUT.
 3. RF Cal represent the Harmonics level of the RF input signal to the mixer.