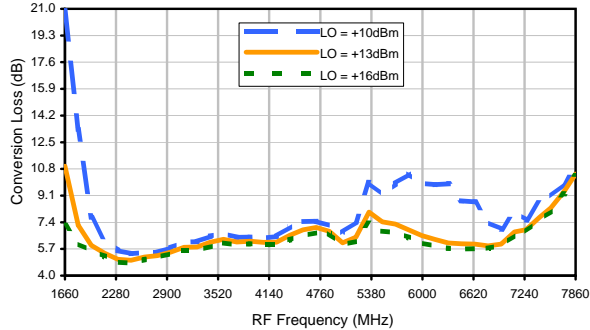


Frequency Mixer

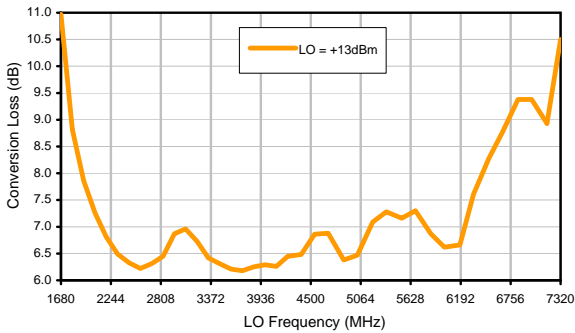
SKY-60MH+

Typical Performance Curves

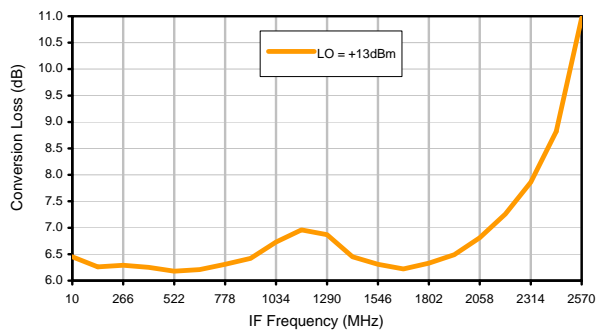
Conversion Loss @ IF=30MHz



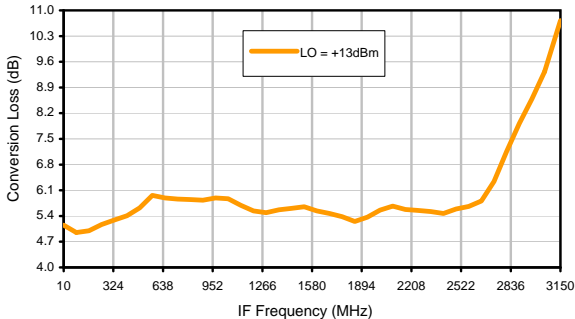
Conversion Loss vs. LO @ RF=4250MHz



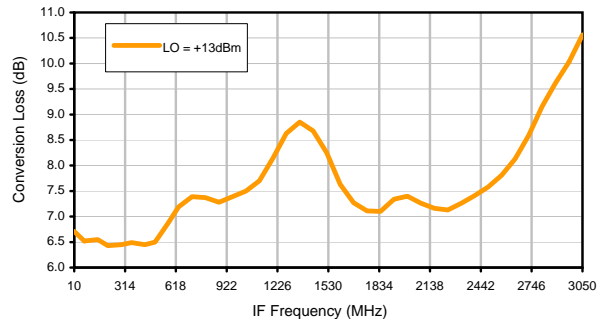
Conversion Loss vs. IF @ RF=4250MHz



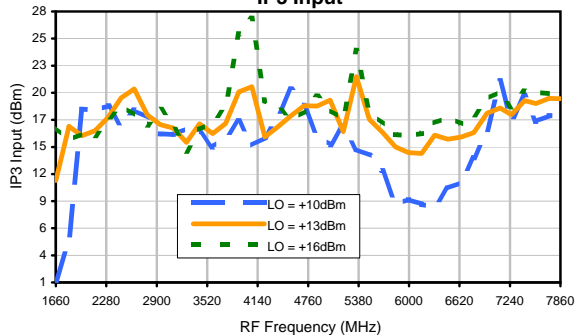
Conversion Loss vs. IF @ RF=2489.89MHz



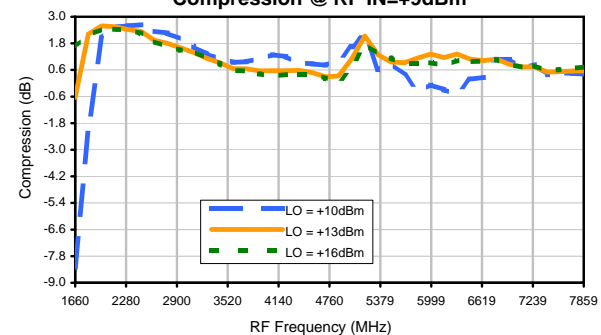
Conversion Loss vs. IF @ RF=6010.1MHz



IP3 Input



Compression @ RF IN=+9dBm

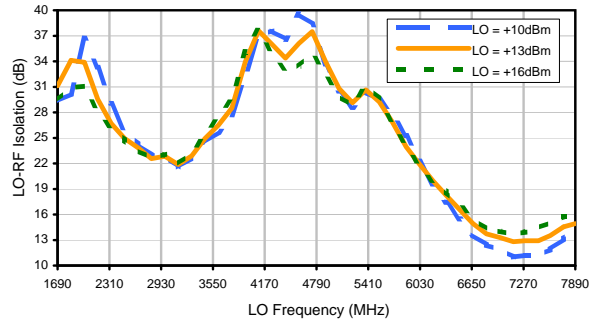


Frequency Mixer

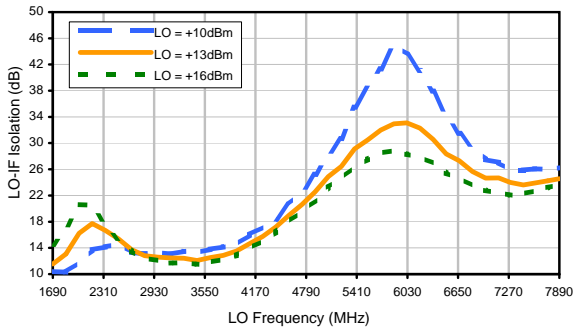
SKY-60MH+

Typical Performance Curves

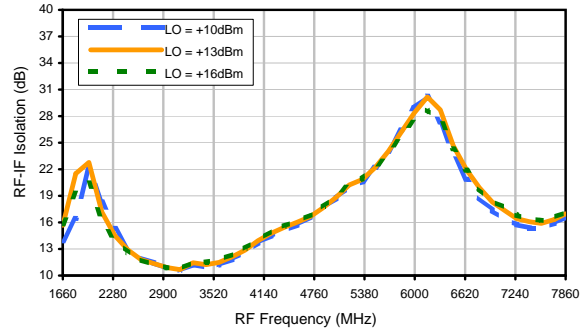
LO-RF Isolation



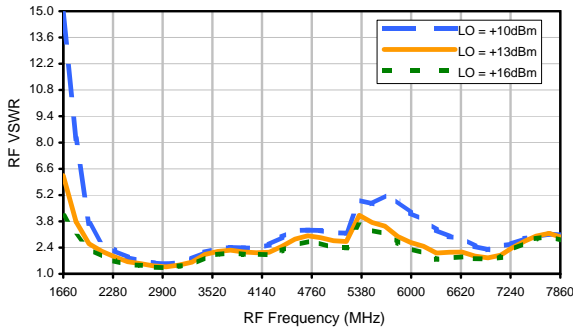
LO-IF Isolation



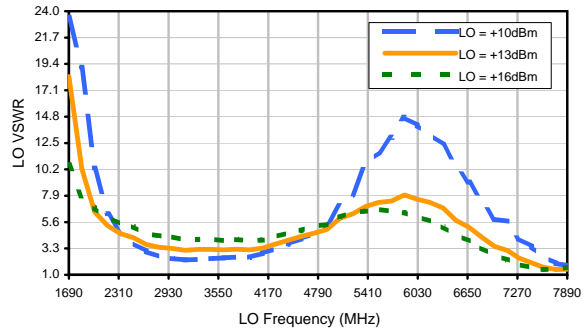
RF-IF Isolation



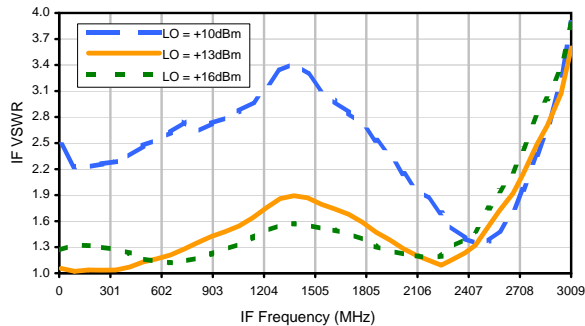
RF VSWR



LO VSWR



IF VSWR



Frequency Mixer

Harmonics Tables

SKY-60MH+

RF HARMONICS ORDER

	(-dBm)	(-dBc)										
0	-	-	+9	21	17	48	23	---	---	---	---	---
1	-	9	+0	32	26	27	41	54	---	---	---	---
2	79	53	70	48	53	56	53	43	54	---	---	---
3	>90	65	66	66	59	68	65	70	66	>77	---	---
4	>90	77	>77	>77	>77	>77	>77	>77	>77	71	>77	---
5	>90	>77	>77	>77	>77	>77	>77	>77	>77	>77	>77	>77
6	---	---	>77	>77	>77	>77	>77	>77	>77	>77	>77	>77
7	---	---	---	>77	>77	>77	>77	>77	>77	>77	>77	>77
8	---	---	---	---	>77	>77	>77	>77	>77	>77	>77	>77
9	---	---	---	---	---	>77	>77	>77	>77	>77	>77	>77
10	---	---	---	---	---	---	>77	>77	>77	>77	>77	>77
	RF CAL	0	1	2	3	4	5	6	7	8	9	10

Test conditions: RF IN: 4250 MHz; -6.00 dBm.
 LO IN: 4280 MHz; +13.00 dBm
 IF OUT: 30 MHz; -12.58 dBm

RF HARMONICS ORDER

	(-dBm)	(-dBc)										
0	-	-	1	30	29	48	43	---	---	---	---	---
1	-	9	+0	35	27	31	46	53	---	---	---	---
2	59	42	50	39	46	51	46	41	50	---	---	---
3	81	46	48	46	48	50	48	52	53	83	---	---
4	>90	56	86	68	63	65	56	61	63	50	75	---
5	>90	79	77	63	68	62	56	66	59	69	65	73
6	---	---	76	75	80	82	76	72	69	70	81	64
7	---	---	---	>87	>87	>87	84	78	70	82	70	80
8	---	---	---	---	>87	>87	>87	>87	>87	81	84	83
9	---	---	---	---	---	>87	>87	>87	>87	85	83	>87
10	---	---	---	---	---	---	>87	>87	>87	>87	>87	85
	RF CAL	0	1	2	3	4	5	6	7	8	9	10

LO HARMONICS ORDER

Test conditions: RF IN: 4250 MHz; 4.00 dBm.
 LO IN: 4280 MHz; +13.00 dBm
 IF OUT: 30 MHz; -2.68 dBm

- Notes: 1. All Harmonics are in (dBc) relative to IF OUTPUT.
 2. + entry denotes harmonics are in (dBc) above IF OUTPUT.
 3. RF Cal represent the Harmonics level of the RF input signal to the mixer.