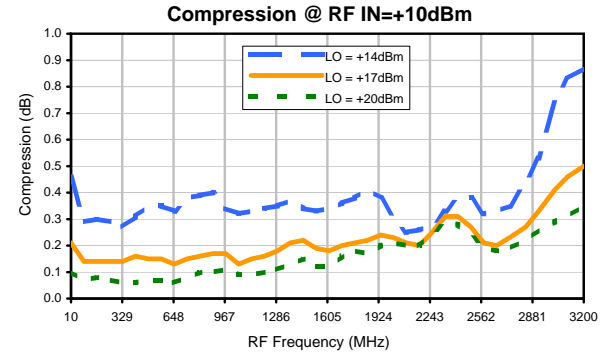
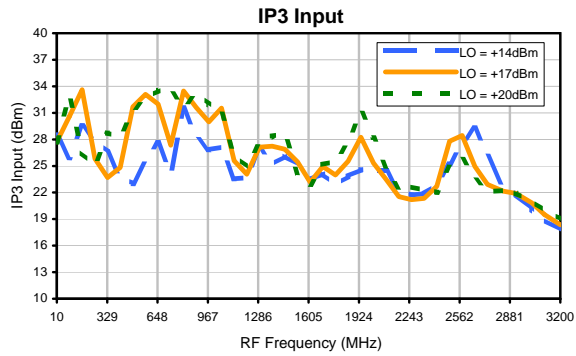
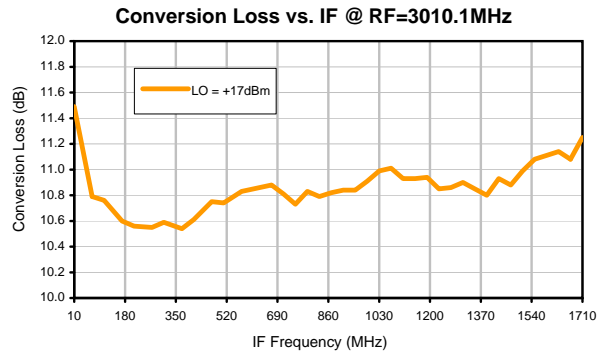
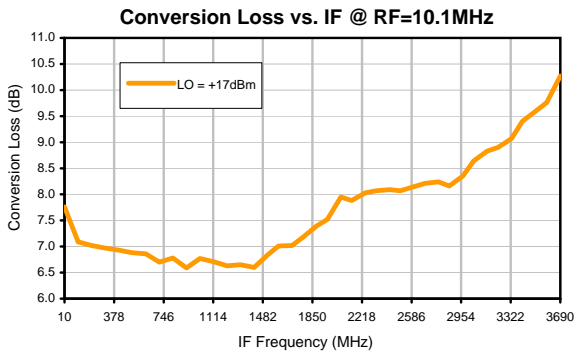
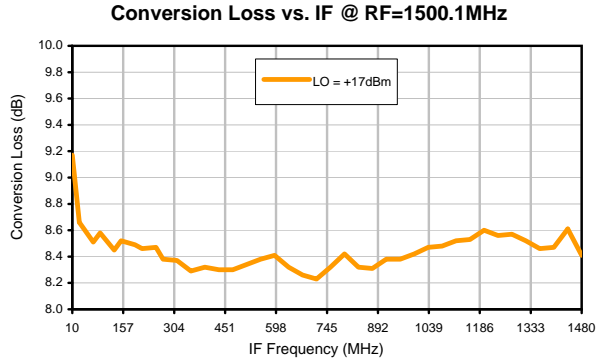
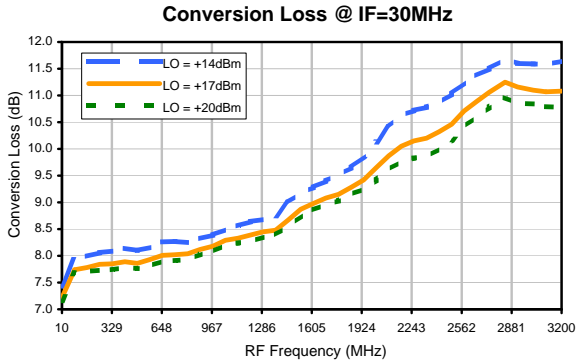


# Frequency Mixer

## Typical Performance Curves

# SRA-11H+



REV. X3  
SRA-11H+  
101031  
Page 1 of 3



IF/RF MICROWAVE COMPONENTS • ISO 9001 ISO 14001 AS 9100 CERTIFIED • RoHS compliant  
P.O. Box 350166, Brooklyn, New York 11235-0003 (718) 934-4500 Fax (718) 332-4661



The Design Engineers Search Engine finds the model you need, Instantly • For detailed performance specs & shopping online see

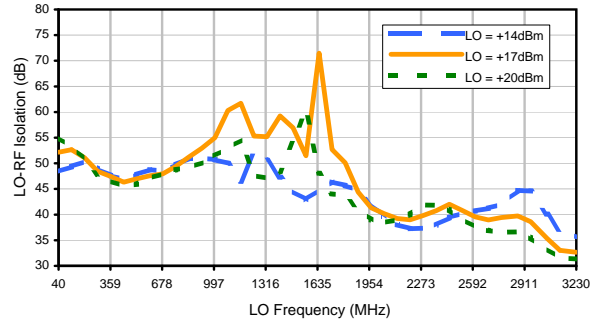


# Frequency Mixer

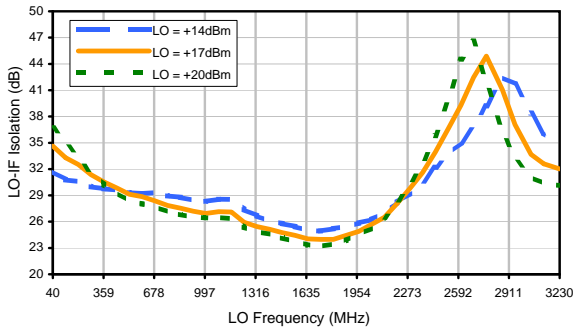
## Typical Performance Curves

SRA-11H+

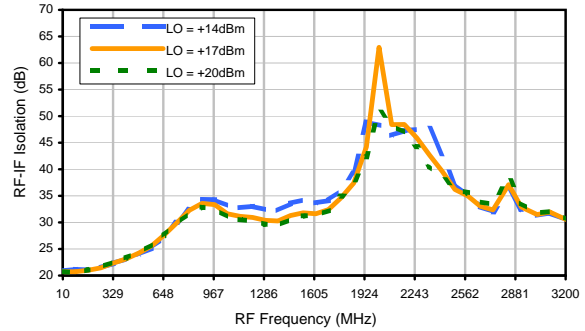
LO-RF Isolation



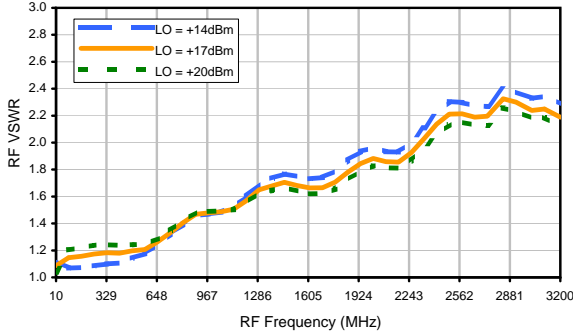
LO-IF Isolation



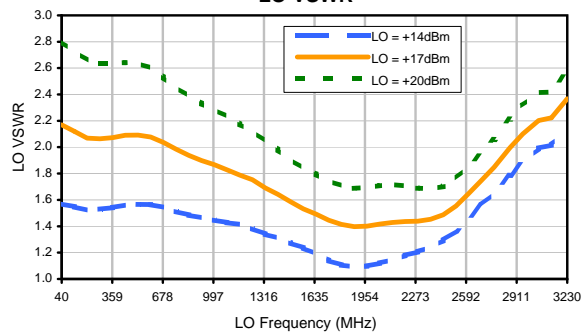
RF-IF Isolation



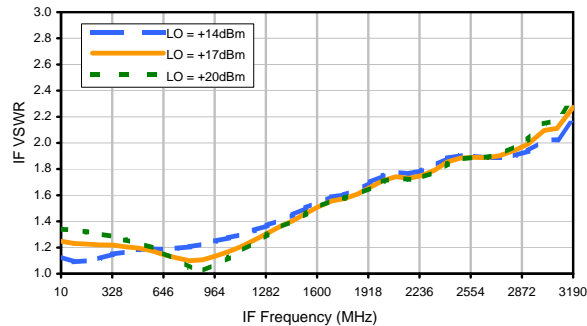
RF VSWR



LO VSWR



IF VSWR



# Frequency Mixer

## Harmonics Tables

# SRA-11H+

RF HARMONICS ORDER

	(-dBm)	(-dBc)										
0	-	-	+6	10	10	19	28	40	21	27	26	54
1	-	21	+0	24	13	31	24	39	37	42	39	43
2	66	56	53	47	61	51	48	66	58	65	53	56
3	>90	>76	66	70	69	66	69	70	>76	>76	>76	>76
4	>90	>76	>76	>76	>76	>76	>76	>76	>76	>76	>76	>76
5	>90	>76	>76	>76	>76	>76	>76	>76	>76	>76	>76	>76
6	>90	>76	>76	>76	>76	>76	>76	>76	>76	>76	>76	>76
7	>90	>76	>76	>76	>76	>76	>76	>76	>76	>76	>76	>76
8	>90	>76	>76	>76	>76	>76	>76	>76	>76	>76	>76	>76
9	>90	>76	>76	>76	>76	>76	>76	>76	>76	>76	>76	>76
10	>90	>76	>76	>76	>76	>76	>76	>76	>76	>76	>76	>76
	RF CAL	0	1	2	3	4	5	6	7	8	9	10

Test conditions: RF IN: 1505 MHz; -5.00 dBm.  
 LO IN: 1535 MHz; +17.00 dBm  
 IF OUT: 30 MHz; -13.84 dBm

RF HARMONICS ORDER

	(-dBm)	(-dBc)										
0	-	-	4	19	21	29	39	50	34	40	41	71
1	-	21	+0	25	14	32	25	40	38	45	41	48
2	46	51	44	39	46	43	39	56	51	58	46	48
3	>90	58	46	54	50	50	50	51	54	63	64	59
4	>90	67	59	60	64	57	56	67	57	79	66	79
5	>90	>86	79	>86	72	73	70	74	72	74	74	>86
6	>90	>86	>86	82	81	74	76	76	75	86	75	84
7	>90	>86	>86	>86	>86	85	85	83	>86	83	>86	>86
8	>90	>86	>86	>86	>86	>86	>86	>86	>86	>86	>86	>86
9	>90	>86	>86	>86	>86	>86	>86	>86	85	>86	>86	>86
10	>90	>86	>86	>86	>86	>86	>86	>86	>86	>86	>86	>86
	RF CAL	0	1	2	3	4	5	6	7	8	9	10

### LO HARMONICS ORDER

Test conditions: RF IN: 1505 MHz; 5.00 dBm.  
 LO IN: 1535 MHz; +17.00 dBm  
 IF OUT: 30 MHz; -3.84 dBm

- Notes: 1. All Harmonics are in (dBc) relative to IF OUTPUT.  
 2. + entry denotes harmonics are in (dBc) above IF OUTPUT.  
 3. RF Cal represent the Harmonics level of the RF input signal to the mixer.