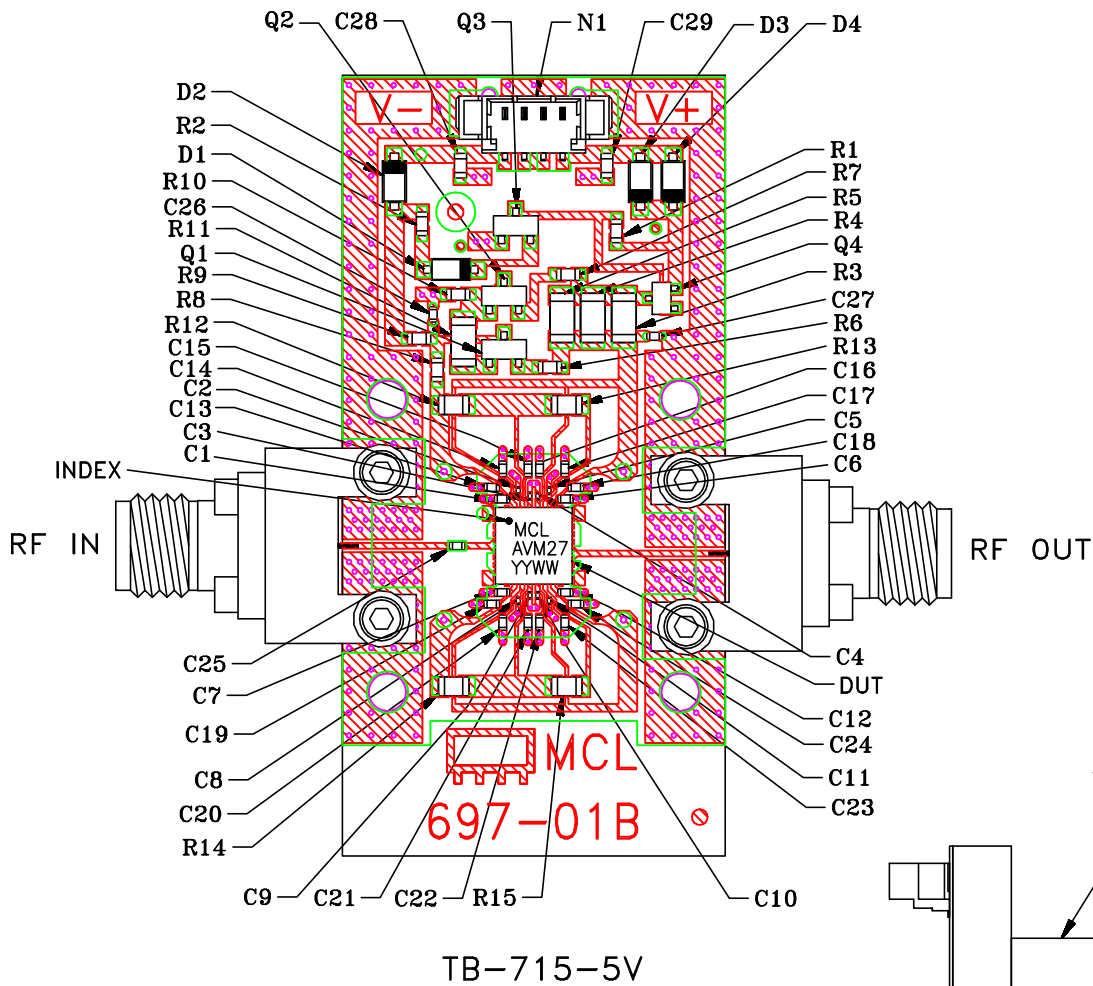


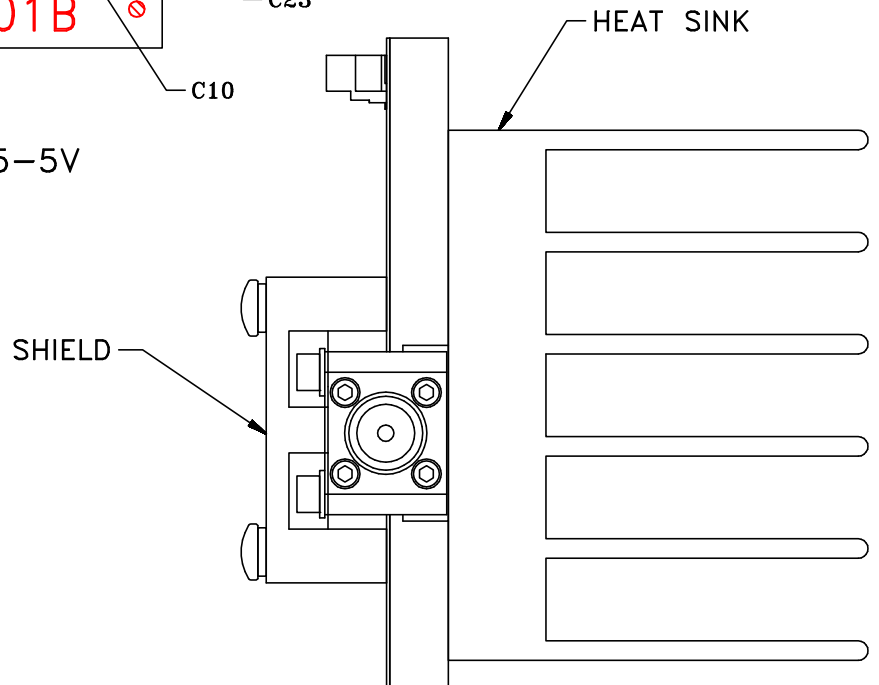
Evaluation Board and Circuit

TOP VIEW

SEE NOTE 1




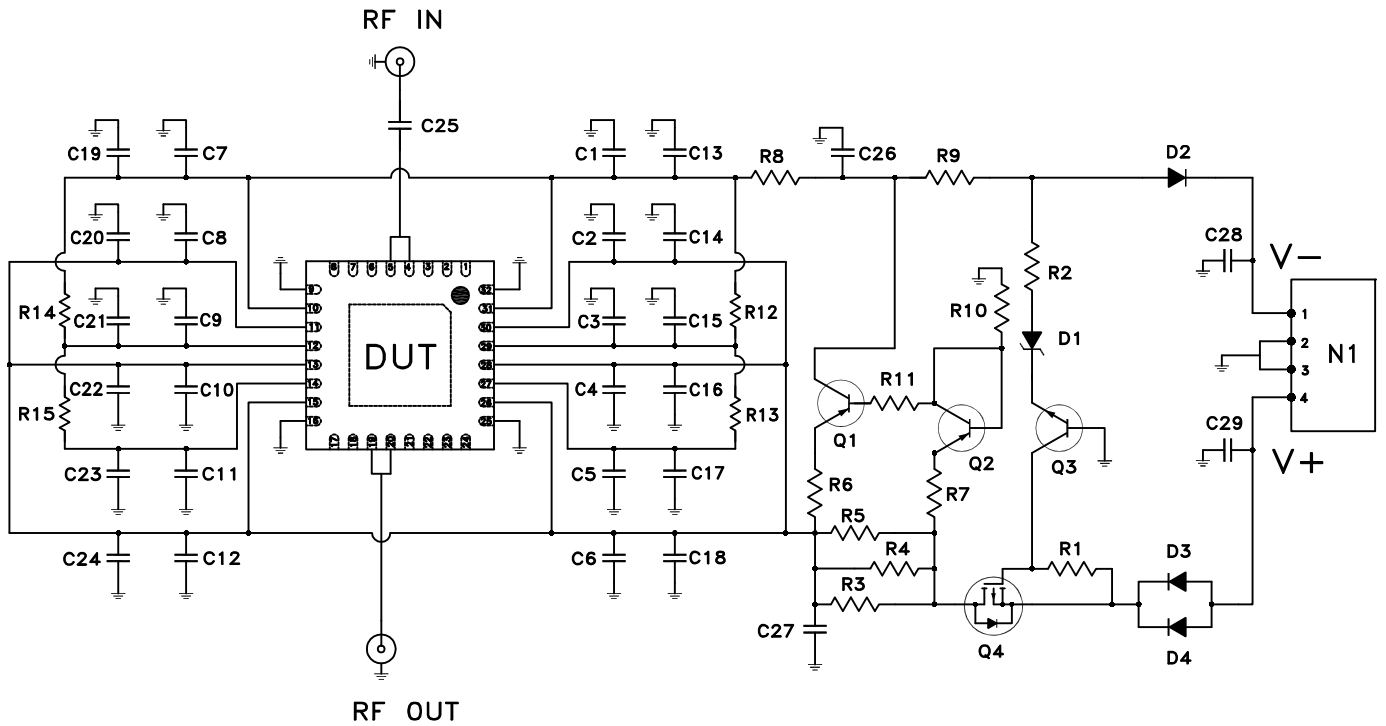
SIDE VIEW



Notes:

1. Shield is not shown on the top view for clarity.
2. Test cable for "N1" is included in TB-715-5V.
3. 50 Ohm 2.92 mm End Launch Female connectors.
4. PCB Material: R04350 or equivalent,
Dielectric Constant=3.5, Thickness=.0066 inch.

 **Mini-Circuits®**



Schematic Diagram

COMPONENT	VALUE/ PART NUMBER	SIZE
DUT	AVM-273HP+	-
N1	CONN VERTICAL HEADER 4 POS	-
Q1,Q2	PNP TRANSISTOR	-
Q3	NPN TRANSISTOR	-
Q4	MOSFET TRANSISTOR	-
D1	DIOD ZENER 3.9V	-
D2-D4	DIOD SCHOTTKY	-
C1,C6,C7,C12-C24	.1 uF	.04 X .02
C2-C5,C8-C11	470 pF	.02 X .01
C25	.1 uF	.04 X .02
C26,C27	100 pF	.04 X .02
C28,C29	1 uF	.06 X .03
R1,R2,R9,R10	10 KOhm	.06 X .03
R3-R5	3.32 Ohm	.12 X .06
R6	100 Ohm	.06 X .03
R7	1.5 KOhm	.06 X .03
R8	1.0 KOhm	.06 X .03
R11	0 Ohm	.12 X .06
R12-R15	0 Ohm	.08 X .05
TEST CABLE	B66-225+M	-