

□
PRODUCT CHANGE NOTICE
PCN Form (D4-E000-73)

PCN#10-022

NOTIFICATION DATE: October 21, 2010

MODEL(S) AFFECTED:

TCBT-2R5G+, TCBT-6G+, TCCH-80+

EXTENT OF CHANGE:

Addition of flat 'lid' to top-side of the core to enhance customer ability to handle in automated processing and to provide a surface for device marking

EFFECT OF CHANGE:

- No change in overall dimensions specification
- No change in fit , function or part number
- Minor change in form (device appearance and added model specific marking)

REASON FOR CHANGE:

Changes are made to improve customer pick & place process to increase manufacturing throughput and enable device identification marking.

EFFECTIVE DATE OF CHANGE:

December 2010

DELIVERY:

Both versions may be shipped during transition period.

ATTACHMENTS:

Case style GU1604

QUESTIONS?

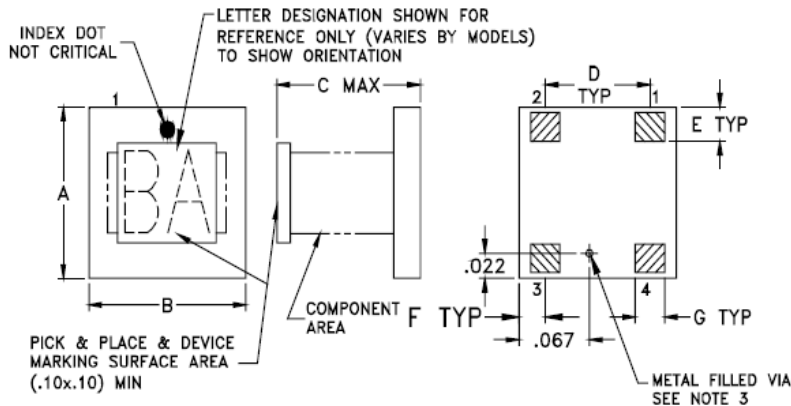
PLEASE CONTACT US.

□
PRODUCT CHANGE NOTICE
 PCN Form (D4-E000-73)

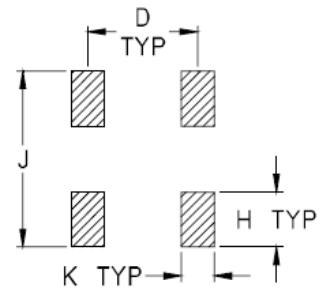
Attachment to PCN#10-022

GU1604

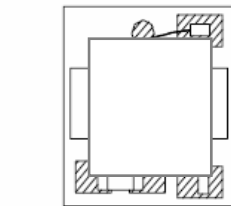
Outline Dimensions



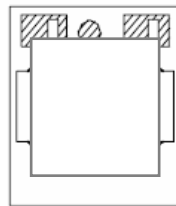
PCB Land Pattern



Suggested Layout,
Tolerance to be within $\pm .002$



TOP VIEW OF "TCBI" SERIES MODELS



TOP VIEW OF "TCCH" SERIES MODELS

CASE #	A	B	C	D	E	F	G	H	J	K	WT.GRAMS
GU1604	.150 (3.81)	.150 (3.81)	.150 (3.81)	.100 (2.54)	.030 (.76)	.025 (.64)	.028 (.71)	.050 (1.27)	.160 (4.06)	.030 (.76)	.10

Dimensions are in inches (mm). Tolerances: 2 Pl. $\pm .01$; 3 Pl. $\pm .005$

Notes:

1. Open style, Ceramic Base.
2. Termination finish: Palladium Silver.
3. Must be isolated from external conductors on mounting surface. Suggested solder mask area is .025 x .025.
At Mini-Circuits option via may be removed.