

Plug-In

# Amplifier

## AMP-25G

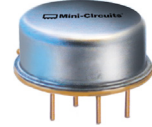
50Ω Low Power 10 to 2500 MHz

### Features

- wideband, 10 to 2500 MHz
- general purpose gain block
- +15V at 35mA typical
- hermetic, TO-8 can

### Applications

- military and high reliability
- small signal amplifier
- buffer amplifier



CASE STYLE: PP120

### Amplifier Electrical Specifications

MODEL NO.	FREQUENCY (MHz)		GAIN (dB)		MAXIMUM POWER (dBm)		DYNAMIC RANGE		VSWR (:1) Typ.		DC POWER	
	$f_l$	$f_u$	Min.	Flatness Max.	Output (1 dB Compr.) Typ.	Input (no damage)	NF (dB) Typ.	IP3 (dBm) Typ.	In	Out	Volt (V) Nom.	Current (mA) Max.
AMP-25G	10	800	18	±1.4	12.2	+13	3.0	+26	1.4	1.2	15	55
	800	1600	15	±1.6	12.5	+13	3.0	+28	1.6	1.2	15	55
	1600	2500	15	±1.0	10.0	+13	4.5	+22	1.8	1.3	15	55

### Pin Connections

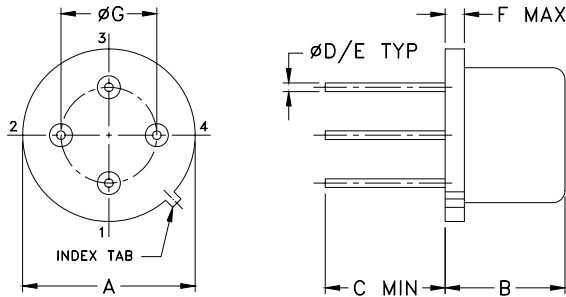
RF IN	2
RF OUT	4
DC	1
GROUND	3
CASE GROUND	3

### Maximum Ratings

Operating Temperature	-54°C to 85°C
Storage Temperature	-55°C to 100°C
DC Voltage	+17V Max.

Permanent damage may occur if any of these limits are exceeded.

### Outline Drawing



### Outline Dimensions (inch/mm)

A	B	C	D	E	F	G	wt
.50	.21	.15	.016	.020	.04	.300	grams
12.70	5.33	3.81	0.41	0.51	1.02	7.62	1.5

### Notes

- A. Performance and quality attributes and conditions not expressly stated in this specification document are intended to be excluded and do not form a part of this specification document.  
 B. Electrical specifications and performance data contained in this specification document are based on Mini-Circuit's applicable established test performance criteria and measurement instructions.  
 C. The parts covered by this specification document are subject to Mini-Circuits standard limited warranty and terms and conditions (collectively, "Standard Terms"); Purchasers of this part are entitled to the rights and benefits contained therein. For a full statement of the Standard Terms and the exclusive rights and remedies thereunder, please visit Mini-Circuits' website at [www.minicircuits.com/MCLStore/terms.jsp](http://www.minicircuits.com/MCLStore/terms.jsp)

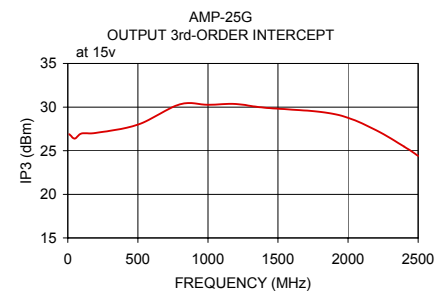
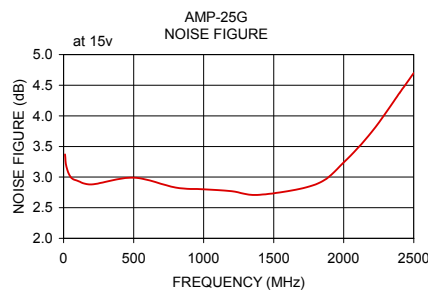
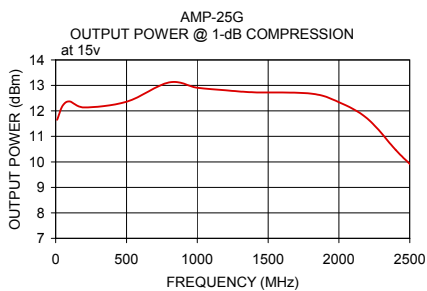
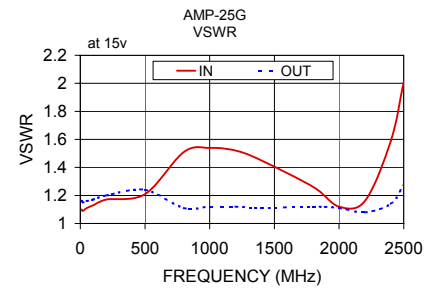
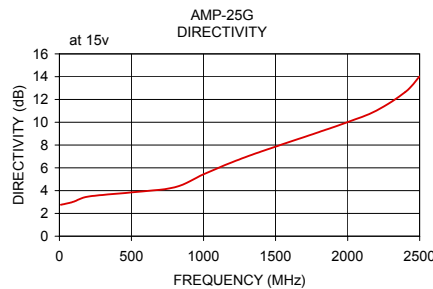
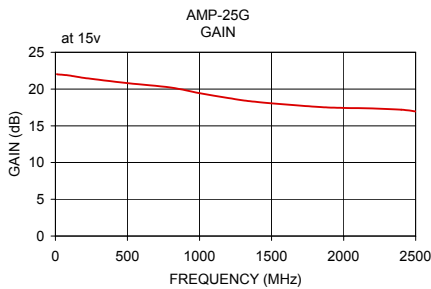


# NON-CATALOG

## Typical Performance Data/Curves

## AMP-25G

FREQUENCY (MHz)	GAIN (dB)	DIRECTIVITY (dB)	VSWR (:1)		NOISE FIGURE (dB)	POUT at 1 dB COMPR. (dBm)	IP3 (dBm)
	15V		IN	OUT			
10.00	22.02	2.76	1.10	1.16	3.37	11.65	26.90
20.00	21.99	2.78	1.09	1.15	3.17	11.79	26.75
50.00	21.95	2.87	1.11	1.16	3.00	12.21	26.39
100.00	21.83	3.04	1.13	1.17	2.94	12.37	26.99
200.00	21.51	3.48	1.17	1.20	2.88	12.14	27.04
500.00	20.81	3.85	1.21	1.24	2.99	12.36	28.00
800.00	20.21	4.29	1.51	1.11	2.83	13.12	30.32
1000.00	19.44	5.43	1.54	1.12	2.80	12.91	30.26
1200.00	18.78	6.49	1.52	1.12	2.77	12.81	30.35
1400.00	18.25	7.44	1.45	1.11	2.71	12.73	29.94
1800.00	17.59	9.13	1.26	1.12	2.88	12.68	29.45
2000.00	17.44	10.01	1.12	1.11	3.24	12.34	28.76
2200.00	17.36	11.02	1.16	1.08	3.74	11.70	27.35
2400.00	17.19	12.65	1.59	1.14	4.38	10.47	25.47
2500.00	16.95	14.03	2.01	1.27	4.70	9.92	24.40



**Notes**

- A. Performance and quality attributes and conditions not expressly stated in this specification document are intended to be excluded and do not form a part of this specification document.
- B. Electrical specifications and performance data contained in this specification document are based on Mini-Circuit's applicable established test performance criteria and measurement instructions.
- C. The parts covered by this specification document are subject to Mini-Circuits standard limited warranty and terms and conditions (collectively, "Standard Terms"); Purchasers of this part are entitled to the rights and benefits contained therein. For a full statement of the Standard Terms and the exclusive rights and remedies thereunder, please visit Mini-Circuits' website at [www.minicircuits.com/WCLStore/terms.jsp](http://www.minicircuits.com/WCLStore/terms.jsp)

