

Coaxial Bandpass Filter

NON-CATALOG

BIF-21.4+
BIF-21.4

50Ω Constant Impedance 18 to 25 MHz

Maximum Ratings

Operating Temperature	-55°C to 100°C
Storage Temperature	-55°C to 100°C
RF Power Input	0.5W max.

Features

- low VSWR in pass & stopbands, 1.3:1 typ.
- rugged shielded case
- custom to models available

Applications

- harmonic rejection
- lab use



CASE STYLE: FF55

Connectors	Model	Price	Qty.
BNC	BIF-21.4(+)	Contact Sales Dept.	

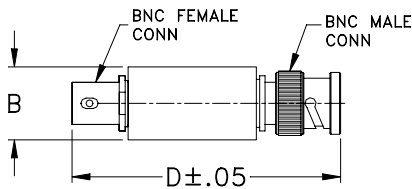
+ RoHS compliant in accordance with EU Directive (2002/95/EC)

The +Suffix identifies RoHS Compliance. See our web site for RoHS Compliance methodologies and qualifications.

Bandpass Filter Electrical Specifications

MODEL NO.	CENTER FREQ. (MHz)	PASSBAND (MHz) (loss<1 dB)	STOPBANDS		VSWR, 1.3:1 Typ. TOTAL BAND (MHz)
			(loss > 10 dB) at MHz	(loss > 20 dB) at MHz	
BIF-21.4(+)	21.4	18-25	4.9 & 85	1.3 & 150	DC-220

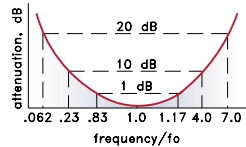
Outline Drawing



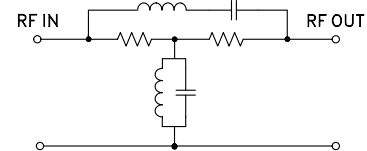
Outline Dimensions (inch/mm)

B	D	wt
.54	2.59	grams
13.72	65.79	40.0

typical frequency response

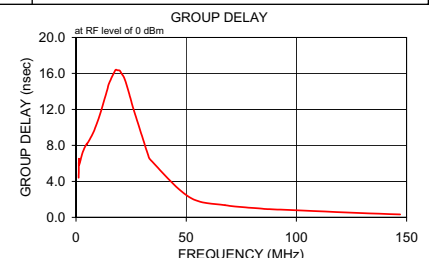
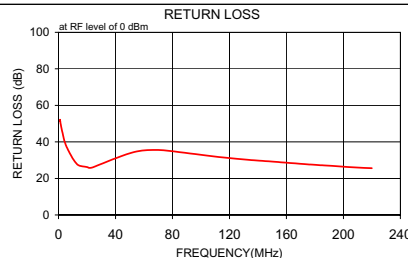


Electrical Schematic



Typical Performance Data

Frequency (MHz)	Insertion Loss (dB)		Return Loss (dB)	Frequency (MHz)	Group Delay (nsec)
	\bar{x}	σ			
1.00	25.27	0.20	52.20	1.20	4.399
1.10	24.91	0.20	51.60	1.30	6.493
1.10	24.55	0.20	51.70	1.40	5.803
1.20	24.24	0.20	51.40	2.60	6.877
1.20	23.93	0.20	51.20	3.70	7.658
1.30	23.64	0.20	50.90	4.90	8.204
1.40	23.17	0.20	50.10	5.00	8.142
3.70	15.71	0.10	41.80	7.90	9.473
4.90	13.27	0.10	39.00	11.00	11.528
6.00	11.38	0.10	36.80	14.00	14.015
8.70	7.85	0.10	32.80	15.00	14.909
11.30	5.18	0.10	29.50	17.90	16.385
14.00	2.92	0.10	27.20	18.80	16.348
18.00	0.72	0.10	26.50	19.80	16.309
20.30	0.14	0.10	26.20	20.90	15.915
21.50	0.01	0.10	25.80	21.60	15.629
23.80	0.05	0.10	26.00	22.40	15.139
40.00	2.02	0.20	31.00	23.20	14.502
55.00	7.93	0.20	34.80	24.00	13.843
70.00	10.88	0.20	35.60	24.80	13.162
85.00	13.23	0.20	34.40	26.20	11.927
100.00	15.41	0.20	32.90	32.70	6.934
116.70	17.64	0.20	31.40	33.90	6.349
133.30	19.87	0.10	30.20	51.30	2.263
150.00	22.27	0.10	29.20	67.60	1.347
175.00	26.56	0.20	27.70	84.60	0.959
186.30	28.96	0.20	27.10	86.10	0.936
197.50	31.82	0.30	26.60	107.80	0.693
208.80	35.24	0.60	26.00	128.10	0.484
220.00	38.08	1.40	25.60	147.10	0.321



Mini-Circuits®
ISO 9001 ISO 14001 CERTIFIED

ALL NEW
minicircuits.com

P.O. Box 350166, Brooklyn, New York 11235-0003 (718) 934-4500 Fax (718) 332-4661 For detailed performance specs & shopping online see Mini-Circuits web site



The Design Engineers Search Engine Provides ACTUAL Data Instantly From MINI-CIRCUITS At: www.minicircuits.com

RF/IF MICROWAVE COMPONENTS

REV. A
M98898
BIF-21.4
070509