

Band Pass Filter

Surface Mount

BPF-EDU1211

Important Note

This model has been designed, built and tested in our engineering department. Performance data represents model capability. At present it is a non-catalog model. On request, we can supply a final specification sheet, part number and price/delivery information.



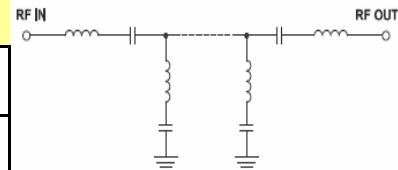
Please click "Back", and then click "Contact Us" for Applications support.

CASE STYLE : HP1156

ELECTRICAL SPECIFICATIONS 50Ω @ +25°C				
Parameter	Min.	Typ.	Max.	Units
Passband (Loss < 3.5 dB)	135		145	MHz
Centre frequency		140		MHz
Low Band (Loss > 40 dB)	DC		105	MHz
Low Band (Loss > 20 dB)	105		125	MHz
High Band (Loss > 20 dB)	155		175	MHz
High Band (Loss > 40 dB)	175		400	MHz
Passband VSWR		1.5	1.8	(:1)
Stopband VSWR		20		(:1)

Functional Schematic

MAXIMUM RATINGS	
Operating Temperature	-40°C to 85°C
Storage Temperature	-55°C to 100°C
RF Power Input	1W



PIN CONNECTIONS	
Input	2
Output	11
Not Connected	9,18
Case Ground	1,3,4,5,6,7,8,10,12,13,14,15,16,17