

Band Pass Filter

Surface Mount

BPF-EDU1382+

Important Note

This model has been designed, built and tested in our engineering department. Performance data represents model capability. At present it is a non-catalog model. On request, we can supply a final specification sheet, part number and price/delivery information.



CASE STYLE : HP1156

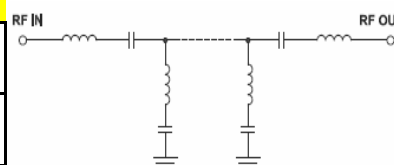
Please click "Back", and then click "Contact Us" for Applications support.

ELECTRICAL SPECIFICATIONS 50Ω @ +25°C

Parameter	Min.	Typ.	Max.	Units
Passband (Loss < 3.0 dB)	145		150	MHz
Centre frequency		148		MHz
Low Band (Loss > 40 dB)	DC		110	MHz
Low Band (Loss > 20 dB)	110		118	MHz
High Band (Loss > 20 dB)	166		175	MHz
High Band (Loss > 40 dB)	175		400	MHz
Passband VSWR		1.2	1.67	(:1)
Stopband VSWR		20		(:1)

Functional Schematic

MAXIMUM RATINGS	
Operating Temperature	-40°C to 85°C
Storage Temperature	-55°C to 100°C
RF Power Input	0.5W



PIN CONNECTIONS

Input	2
Output	11
Not Connected	9,18
Case Ground	1, 3- 8, 10,12-17



IF/RF MICROWAVE COMPONENTS • ISO 9001 ISO 14001 AS9100 CERTIFIED RoHS compliant
P.O. Box 350166, Brooklyn, New York 11235-0008 (718) 934-4500 Fax (718) 332-4661



The Design Engineers Search Engine finds the model you need, Instantly • For detailed performance specs & shopping online see



REV. 1
BPF-EDU1382
URJ
100818
Page 1 of 1