

# Band Pass Filter

# BPF-EDU1641

## Surface Mount

### Important Note

This model has been designed, built and tested in our engineering department. Performance data represents model capability. At present it is a non-catalog model. On request, we can supply a final specification sheet, part number and price/delivery information.



Please click "Back", and then click "Contact Us" for Applications support.

HQ1157

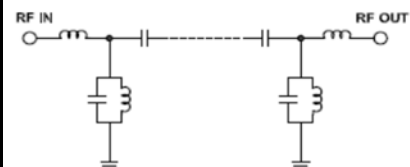
### ELECTRICAL SPECIFICATIONS 50Ω @ +25°C

Parameter	Min.	Typ.	Max.	Units
Passband (Loss < 4 dB)	135.25		137.75	MHz
Centre frequency		136.5		MHz
Low Band (Loss > 40 dB)	DC	105		MHz
Low Band (Loss > 20 dB)	DC	114		MHz
High Band (Loss > 20 dB)		160	1000	MHz
High Band (Loss > 40 dB )		176	1000	MHz
Passband VSWR		1.5		(:1)
Stopband VSWR		17		(:1)

### Functional Schematic

### MAXIMUM RATINGS

Operating Temperature	-40°C to 85°C
Storage Temperature	-55°C to 100°C
RF Power Input	200mW



### PIN CONNECTIONS

Input	1
Output	8
Ground	2-7, 9-14



P.O. Box 350166, Brooklyn, New York 11235-0003 (718) 934-4500 Fax (718) 332-4661 For detailed performance specs & shopping online see  
The Design Engineers Search Engine Provides ACTUAL Data Instantly From MINI-CIRCUITS At: [www.minicircuits.com](http://www.minicircuits.com)



RF/IF MICROWAVE COMPONENTS



REV. X1  
BPF-EDU1641  
URJ  
120802  
Page 1 of 1