

# Band Pass Filter

# BPF-EDU2054

## Surface Mount

### Important Note

This model has been designed, built and tested in our engineering department. Performance data represents model capability. At present it is a non-catalog model. On request, we can supply a final specification sheet, part number and price/delivery information.



HQ1157

Please click "Back", and then click "Contact Us" for Applications support.

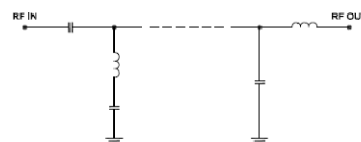
### ELECTRICAL SPECIFICATIONS 50Ω @ +25°C

Parameter	Min.	Typ.	Max.	Units
Passband (Loss < 2.5 dB)	650		1670	MHz
Centre frequency		1160		MHz
Low Band (Loss > 20 dB)	DC	400		MHz
High Band (Loss > 20 dB)		2170	4000	MHz
Passband VSWR		1.7		(:1)
Stopband VSWR		20		(:1)

### Functional Schematic

### MAXIMUM RATINGS

Operating Temperature	-40°C to 85°C
Storage Temperature	-55°C to 100°C
RF Power Input	3 W



### PIN CONNECTIONS

Input	1
Output	8
Ground	2-7,9-14