

Band Pass Filter

BPF-EDU2055

Surface Mount

Important Note

This model has been designed, built and tested in our engineering department. Performance data represents model capability. At present it is a non-catalog model. On request, we can supply a final specification sheet, part number and price/delivery information.

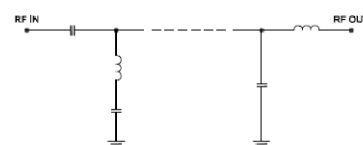


HQ1157

ELECTRICAL SPECIFICATIONS 50Ω @ +25°C				
Parameter	Min.	Typ.	Max.	Units
Passband (Loss < 3 dB)	350		1670	MHz
Centre frequency		1010		MHz
Low Band (Loss > 20 dB)	DC	200		MHz
High Band (Loss > 20 dB)		2170	4000	MHz
Passband VSWR		2		(:1)
Stopband VSWR		20		(:1)

Functional Schematic

MAXIMUM RATINGS	
Operating Temperature	-40°C to 85°C
Storage Temperature	-55°C to 100°C
RF Power Input	2 W



PIN CONNECTIONS	
Input	1
Output	8
Ground	2-7,9-14