

Engineering Development Model

Band Pass Filter

Surface Mount

BPF-EDU2114

Important Note

This model has been designed, built and tested in our engineering department. Performance data represents model capability. At present it is a non-catalog model. On request, we can supply a final specification sheet, part number and price/delivery information.



Please click "Back", and then click "Contact Us" for Applications support.

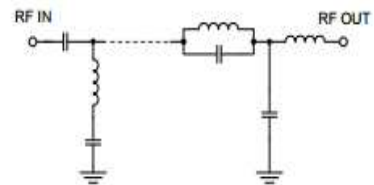
HU1186

ELECTRICAL SPECIFICATIONS 50Ω @ +25°C

Parameter	Min.	Typ.	Max.	Units
Passband (Loss < 2.5 dB)	20		1000	MHz
Centre frequency		510		MHz
Low Band (Loss > 20 dB)	DC	17		MHz
High Band (Loss > 20 dB)		1130	2300	MHz
Passband VSWR		1.5		(:1)
Stopband VSWR		18		(:1)

Functional Schematic

MAXIMUM RATINGS	
Operating Temperature	-40°C to 85°C
Storage Temperature	-55°C to 100°C
RF Power Input	1W



PIN CONNECTIONS

Input	2
Output	9
Not Connected	6,13
Ground	1,3,4,5,7,8,10,11,12,14