

Band Pass Filter

CBPF-EDU1109

Surface Mount

Important Note

This model has been designed, built and tested in our engineering department. Performance data represents model capability. At present it is a non-catalog model. On request, we can supply a final specification sheet, part number and price/delivery information.



Please click "Back", and then click "Contact Us" for Applications support.

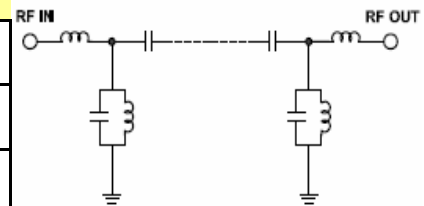
CASE STYLE : HQ1157

ELECTRICAL SPECIFICATIONS 50Ω @ +25°C

Parameter	Min.	Typ.	Max.	Units
Passband (Loss < 8.5 dB)	329		335	MHz
Centre frequency		332		MHz
Low Band (Loss > 40 dB)	DC		308	MHz
High Band (Loss > 40 dB)	358		2250	MHz
High Band (Loss 20 dB typ)	2250		4000	MHz
Passband VSWR		1.2	1.6	(:1)
Stopband VSWR		20		(:1)

Functional Schematic

MAXIMUM RATINGS	
Operating Temperature	-40°C to 85°C
Storage Temperature	-55°C to 100°C
RF Power Input	100mW



PIN CONNECTIONS

Input	1
Output	8
Not Connected	-
Case Ground	2,3,4,5,6,7,9,10,11,12,13,14