

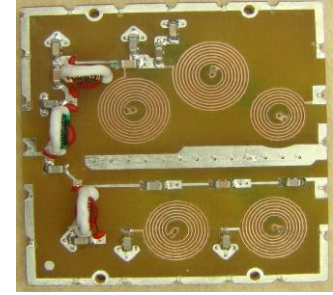
## Diplexer Surface Mount

# DPLX-EDU1481

### Important Note

This model has been designed, built and tested in our engineering department. Performance data represents model capability. At present it is a non-catalog model. On request, we can supply a final specification sheet, part number and price/delivery information.

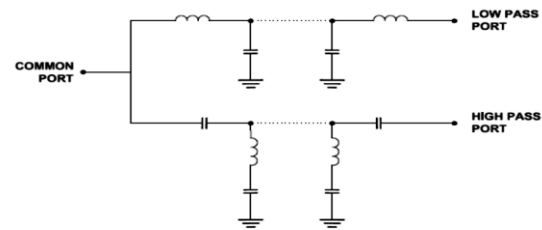
Please click "Back", and then click "Contact Us" for Applications support.



**CASE STYLE : HR1176**

ELECTRICAL SPECIFICATIONS 75Ω @ +25°C							
Parameter		Port	Frequency (MHz)	Min.	Typ.	Max.	Units
Passband	Insertion Loss	Lowpass	5-65		1	1.5	dB
		Highpass	88-1000		1	1.5	dB
	Return Loss	Lowpass	5-65	13	18		dB
		Highpass	88-1000	13	18		dB
		Common	5-65	13	18		dB
			88-1000	13	18		dB
Stop band isolation		Lowpass	88-1000	35	40		dB
		Highpass	5-65	35	40		dB

### Functional Schematic



MAXIMUM RATINGS	
Operating Temperature	-40°C to 85°C
Storage Temperature	-55°C to 100°C
RF Power Input	0.3W

PIN CONNECTIONS	
Highpass port	7
Lowpass port	9
Common port	18
Ground	1,2,3,4,5,6,8,10,11,12,13,14,15,16,17,19,20