

# Ceramic High Pass Filter

## SMT

HFCN-ED14070/4

**Important Note**

This model has been designed, built and tested in our engineering department. Performance data represents model capability.  
At present it is a non-catalog model. On request, we can supply a final specification sheet, part number and price/delivery information.

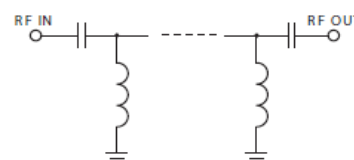
Please click "Back", and then click "Contact Us" for Applications support.



CASE STYLE : FV1206

ELECTRICAL SPECIFICATIONS 50Ω @ +25°C							
Parameters		F#	Frequency (MHz)	Min.	Typ.	Max.	Units
Stop Band	Insertion Loss	DC-F1	DC-530	40	--	--	dB
		DC-F2	DC-700	20	--	--	dB
	Frequency cutoff	F3	1100	--	3	--	dB
	VSWR	DC-F2	DC-700	--	20	--	:1
Pass Band	Insertion Loss	F4-F7	1400-3500	--	--	1.3	dB
		F5-F8	1500-3900	--	--	2	dB
	VSWR	F4-F6	1400-3000	--	1.5	--	:1

MAXIMUM RATINGS	
Operating Temperature	-55°C to 100°C
Storage Temperature	-55°C to 100°C
RF Power Input	7W max.

**Functional Schematic**

PIN CONNECTIONS	
RF IN	1
RF OUT	3
GROUND	2,4