

Ceramic High Pass Filter

HFTC-9R5+ HFTC-9R5

50Ω 1300 to 3500 MHz



Maximum Ratings

Operating Temperature	-55°C to 100°C
Storage Temperature	-55°C to 125°C

Pin Connections

RF IN	2**
RF OUT	5**
GROUND	1,3,4,6

** RF IN & RF OUT can be interchanged

Features

- miniature size, 0.15"X0.15"
- low profile, 0.028" height
- low pass-band insertion loss, 1.0 dB typ.
- excellent input power handling, 14W
- hermetically sealed

Applications

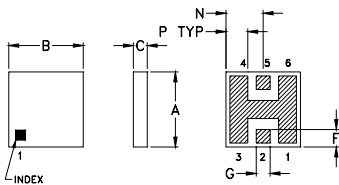
- sub-harmonic rejection
- transmitters/receivers
- dc blocking

CASE STYLE: FR933
PRICE: \$3.75 ea. QTY. (10-49)

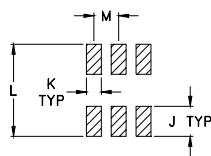
+ RoHS compliant in accordance with EU Directive (2002/95/EC)

The +Suffix identifies RoHS Compliance. See our web site for RoHS Compliance methodologies and qualifications.

Outline Drawing



PCB Land Pattern

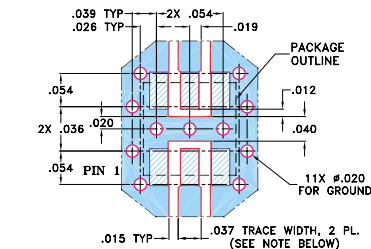


Suggested Layout,
Tolerance to be within ±.002

Outline Dimensions (inch/mm)

A	B	C	D	E	F	G	H
.150	.150	.028	--	--	.035	.028	--
3.81	3.81	0.71	--	--	0.89	0.71	--
J	K	L	M	N	P	wt	
.060	.030	.184	.050	.075	.044	grams	
1.52	0.76	4.67	1.27	1.91	1.12	0.15	

Demo Board MCL P/N: TB-233 Suggested PCB Layout (PL-112)



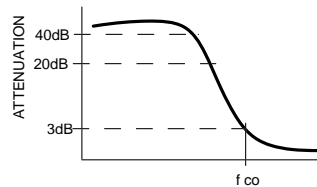
- NOTES: 1. TRACE WIDTH IS SHOWN FOR ROGERS RO4350B WITH DIELECTRIC THICKNESS 0.020" ± 0.0015"; COPPER: 1/2 OZ. EACH SIDE. FOR OTHER MATERIALS TRACE WIDTH MAY NEED TO BE MODIFIED.
2. BOTTOM SIDE OF THE PCB IS CONTINUOUS GROUND PLANE.
■ DENOTES PCB COPPER LAYOUT WITH SMOBC (SOLDER MASK OVER BARE COPPER)
■ DENOTES COPPER LAND PATTERN FREE OF SOLDER MASK

Electrical Specifications (T_{AMB}=25°C)

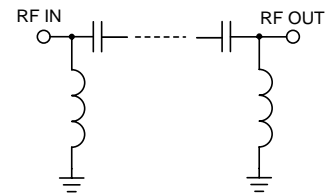
STOP BAND (MHz)	f _{co} , MHz Nom.	PASSBAND (MHz)	VSWR (:1)		POWER INPUT* (W)	MARKING	NO. OF SECTIONS	
			Stopband	Passband				
(loss > 40 dB)	(loss > 20 dB)	Typ.	Typ.	Typ.				
DC-600	750	950	1300-3500	18	1.3	14	HF7	7

* Derate linearly to 6W at 100°C ambient.

typical frequency response

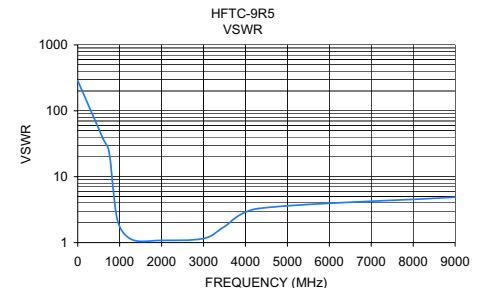
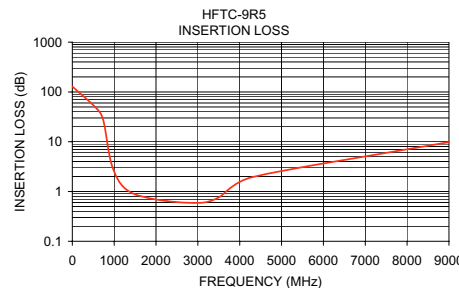


electrical schematic



Typical Performance Data at 25°C

Frequency (MHz)	Insertion Loss (dB)	VSWR (:1)
1.00	128.65	285.20
600.00	44.78	38.32
750.00	25.06	23.43
950.00	3.28	2.16
1300.00	1.08	1.11
2000.00	0.69	1.08
3000.00	0.59	1.15
3500.00	0.76	1.74
4300.00	1.94	3.28
9000.00	9.82	4.89



Mini-Circuits®
ISO 9001 ISO 14001 CERTIFIED

ALL NEW
minicircuits.com

P.O. Box 350166, Brooklyn, New York 11235-0003 (718) 934-4500 Fax (718) 332-4661 For detailed performance specs & shopping online see Mini-Circuits web site



The Design Engineers Search Engine Provides ACTUAL Data Instantly From MINI-CIRCUITS At: www.minicircuits.com

RF/IF MICROWAVE COMPONENTS

REV. H
M102713
HFTC-9R5
EDB-020602
AD/YB/CP
061229