

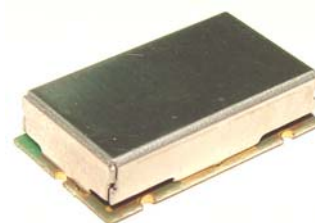
Low Pass Filter

Surface Mount

LPF-EDU1015

Important Note

This model has been designed, built and tested in our engineering department. Performance data represents model capability. At present it is a non-catalog model. On request, we can supply a final specification sheet, part number and price/delivery information.



Please click "Back", and then click "Contact Us" for Applications support.

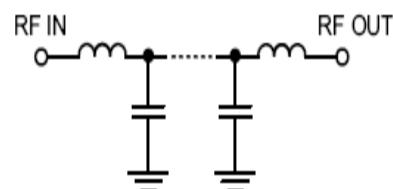
CASE STYLE : HZ1198

ELECTRICAL SPECIFICATIONS 50Ω @ +25°C

Parameter	Min.	Typ.	Max.	Units
Passband (Loss < 1.2 dB)	DC		0.35	MHz
Insertion loss 3dB		0.465		MHz
Stopband (Loss > 20 dB)	0.555		0.609	MHz
	0.609		1000	MHz
Passband VSWR		1.2	1.3	(:1)
Stopband VSWR		20		(:1)

Functional Schematic

MAXIMUM RATINGS	
Operating Temperature	-40°C to 85°C
Storage Temperature	-55°C to 100°C
RF Power Input	1 W



PIN CONNECTIONS

Input	1
Output	2
Not Connected	-
Case Ground	3,4,5,6